



DZIENNIK URZĘDOWY

WOJEWÓDZTWA WIELKOPOLSKIEGO

Poznań, dnia 18 listopada 2014 r.

Poz. 6113

UCHWAŁA NR LI/979/14 SEJMIKU WOJEWÓDZTWA WIELKOPOLSKIEGO

z dnia 27 października 2014 r.

w sprawie utworzenia Rogalińskiego Parku Krajobrazowego

Na podstawie art. 16 ust. 3 ustawy z dnia 16 kwietnia 2004 r. o ochronie przyrody (Dz. U. z 2013 r. poz. 627, poz. 628, i poz. 842) Sejmik Województwa Wielkopolskiego uchwala, co następuje:

§ 1. Rogaliński Park Krajobrazowy, zwany dalej „Parkiem”, obejmuje obszar o powierzchni 12682,7 ha na terenie gmin: Śrem (1753,3 ha), Kórnik (354,4 ha), Mosina (7315,3 ha) i Brodnica (3259,7 ha).

§ 2. Przebieg granicy Parku określa mapa stanowiąca załącznik nr 1 do uchwały oraz wykaz współrzędnych punktów załamania granicy Parku stanowiący załącznik nr 2 do uchwały.

§ 3. Do szczególnych celów ochrony na terenie Parku należy:

1. zachowanie kompleksu zbiorowisk roślinnych związanych funkcjonalnie z doliną rzeki Warty;
2. zachowanie populacji rzadko występujących oraz zagrożonych wyginięciem gatunków roślin, zwierząt i grzybów występujących w dolinie Warty;
3. zachowanie walorów biocenotycznych oraz bogactwa gatunkowego lasów porastających dno doliny Warty oraz stopniowa renaturalizacja obszarów leśnych zniekształconych przez nadmierny udział drzewostanów sosnowych;
4. zachowanie zgrupowań okazałych dębów szypułkowych rosnących na obszarze doliny Warty;
5. zachowanie obecnego charakteru koryta Warty oraz charakterystycznych elementów geomorfologii doliny, w szczególności – starorzeczy w różnych stadiach łądowienia;
6. zachowanie urozmaiconego krajobrazu doliny Warty wraz z unikatowymi panoramami widokowymi;
7. zachowanie elementów dziedzictwa kulturowego wraz z ich otoczeniem.

§ 4. 1. Na terenie Parku wprowadza się następujące zakazy:

- 1) realizacji przedsięwzięć mogących znacząco oddziaływać na środowisko w rozumieniu przepisów ustawy z dnia 3 października 2008 r. o udostępnianiu informacji o środowisku i jego ochronie, udziale społeczeństwa w ochronie środowiska oraz o ocenach oddziaływania na środowisko (Dz. U. z 2013 r. poz. 1235 i poz. 1238, z 2014 r. poz. 587);
- 2) umyślnego zabijania dziko występujących zwierząt, niszczenia ich nor, legowisk, innych schronień i miejsc rozrodu oraz tarlisk i złożonej ikry, z wyjątkiem amatorskiego połowu ryb oraz wykonywania czynności w ramach racjonalnej gospodarki rolnej, leśnej, rybackiej i łowieckiej;
- 3) likwidowania i niszczenia zadrzewień śródpolnych, przydrożnych i nadwodnych, jeżeli nie wynikają z potrzeby ochrony przeciwpowodziowej lub zapewnienia bezpieczeństwa ruchu drogowego lub wodnego lub budowy, odbudowy, utrzymania, remontów lub naprawy urządzeń wodnych;

- 4) pozyskiwania do celów gospodarczych skał, w tym torfu oraz skamieniałości, w tym kopalnych szczątków roślin i zwierząt, a także minerałów i bursztynu;
- 5) wykonywania prac ziemnych trwale zniekształcających rzeźbę terenu, z wyjątkiem prac związanych z zabezpieczeniem przeciwsztormowym, przeciwpowodziowym lub przeciwosuwiskowym lub budową, odbudową, utrzymaniem, remontem lub naprawą urządzeń wodnych;
- 6) dokonywania zmian stosunków wodnych, jeżeli zmiany te nie służą ochronie przyrody lub racjonalnej gospodarce rolnej, leśnej, wodnej lub rybackiej;
- 7) budowania nowych obiektów budowlanych w pasie szerokości 100 m od linii brzegów rzek, jezior i innych zbiorników wodnych, z wyjątkiem obiektów służących turystyce wodnej, gospodarce wodnej lub rybackiej;
- 8) likwidowania, zasypywania i przekształcania zbiorników wodnych, starorzeczy oraz obszarów wodno-błotnych;
- 9) organizowania rajdów motorowych i samochodowych;
- 10) używania łodzi motorowych i innego sprzętu motorowego na otwartych zbiornikach wodnych.

2. Zakazy, o których mowa w ust. 1, nie dotyczą ustaleń miejscowych planów zagospodarowania przestrzennego gmin oraz decyzji o warunkach zabudowy obowiązujących w dniu wejścia w życie niniejszej uchwały.

3. Zakaz, o którym mowa w ust. 1 pkt 1, nie dotyczy ustaleń studiów uwarunkowań i kierunków zagospodarowania przestrzennego gmin obowiązujących w dniu wejścia w życie niniejszej uchwały.

4. Zakaz, o którym mowa w ust. 1 pkt. 3, nie dotyczy działań związanych z ochroną przyrody, realizowanych pod nadzorem służb ochrony przyrody.

5. Zakazy, o których mowa w ust. 1 pkt. 4 i 5 nie dotyczą obszarów przeznaczonych pod wydobycie kopalin w studiach uwarunkowań i kierunków zagospodarowania przestrzennego gmin obowiązujących w dniu wejścia w życie niniejszej uchwały.

6. Zakaz, o którym mowa w ust. 1 pkt. 7 nie dotyczy:

- 1) obszarów przeznaczonych pod zabudowę w studiach uwarunkowań i kierunków zagospodarowania przestrzennego gmin obowiązujących w dniu wejścia w życie niniejszej uchwały;
- 2) rozbudowy i przebudowy istniejących obiektów budowlanych oraz budowy obiektów budowlanych w miejscu istniejących wcześniej;
- 3) sztucznych zbiorników wodnych.

7. Zakaz, o którym mowa w ust. 1 pkt. 9 nie dotyczy części Parku obejmującej drogi publiczne.

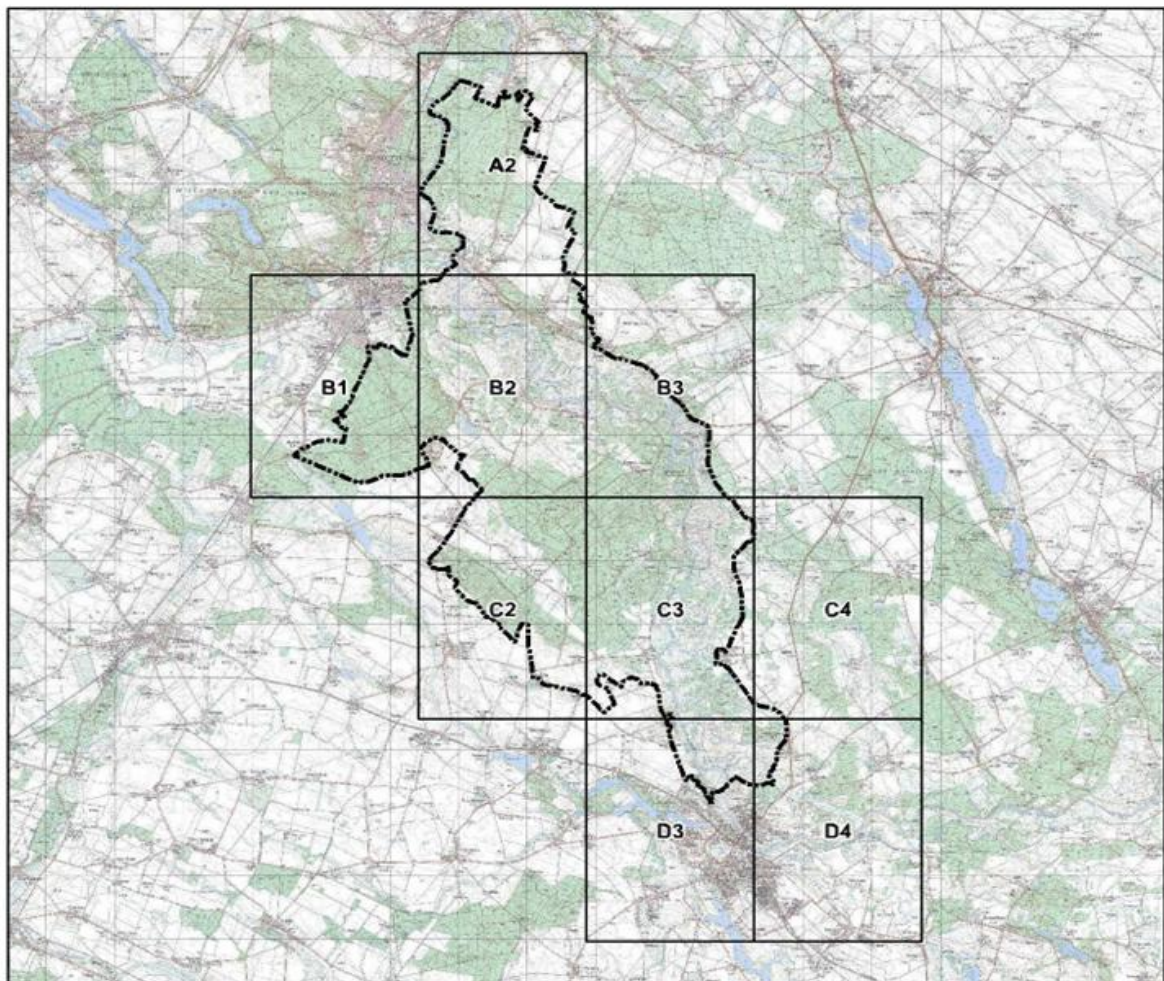
§ 5. Wykonanie uchwały powierza się Zarządowi Województwa Wielkopolskiego.

§ 6. Traci moc rozporządzenie Nr 4/97 Wojewody Poznańskiego z dnia 26 czerwca 1997 r. w sprawie utworzenia Rogalińskiego Parku Krajobrazowego (Dz. Urz. Woj. Poznańskiego Nr 14, poz. 98).

§ 7. Uchwała wchodzi w życie po upływie 14 dni od dnia ogłoszenia w Dzienniku Urzędowym Województwa Wielkopolskiego.

Przewodniczący
Sejmiku Województwa Wielkopolskiego
(-) Lech Dymarski

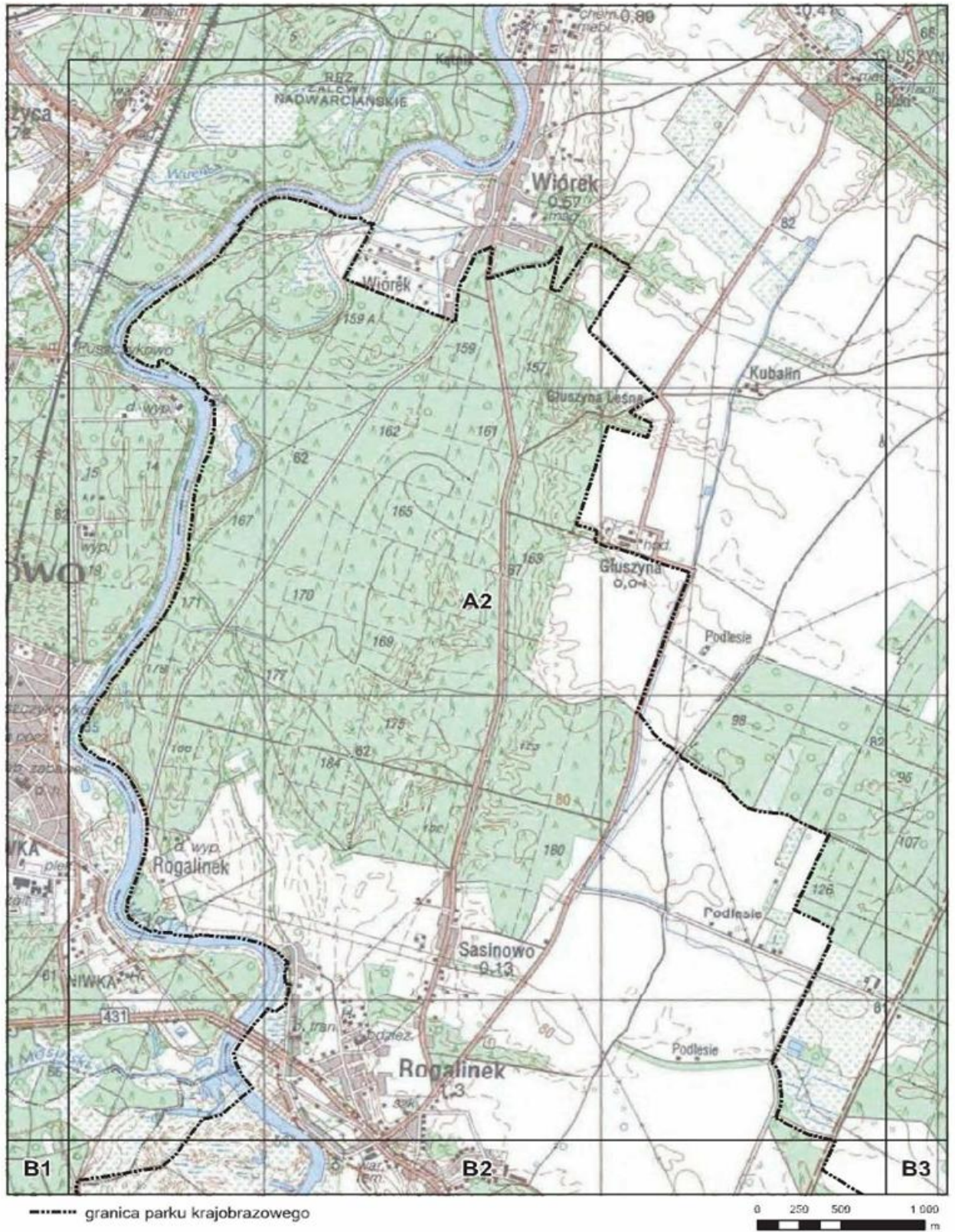
Załącznik nr 1 do Uchwały Nr LI/979/14
Sejmiku Województwa Wielkopolskiego
z dnia 27 października 2014 roku

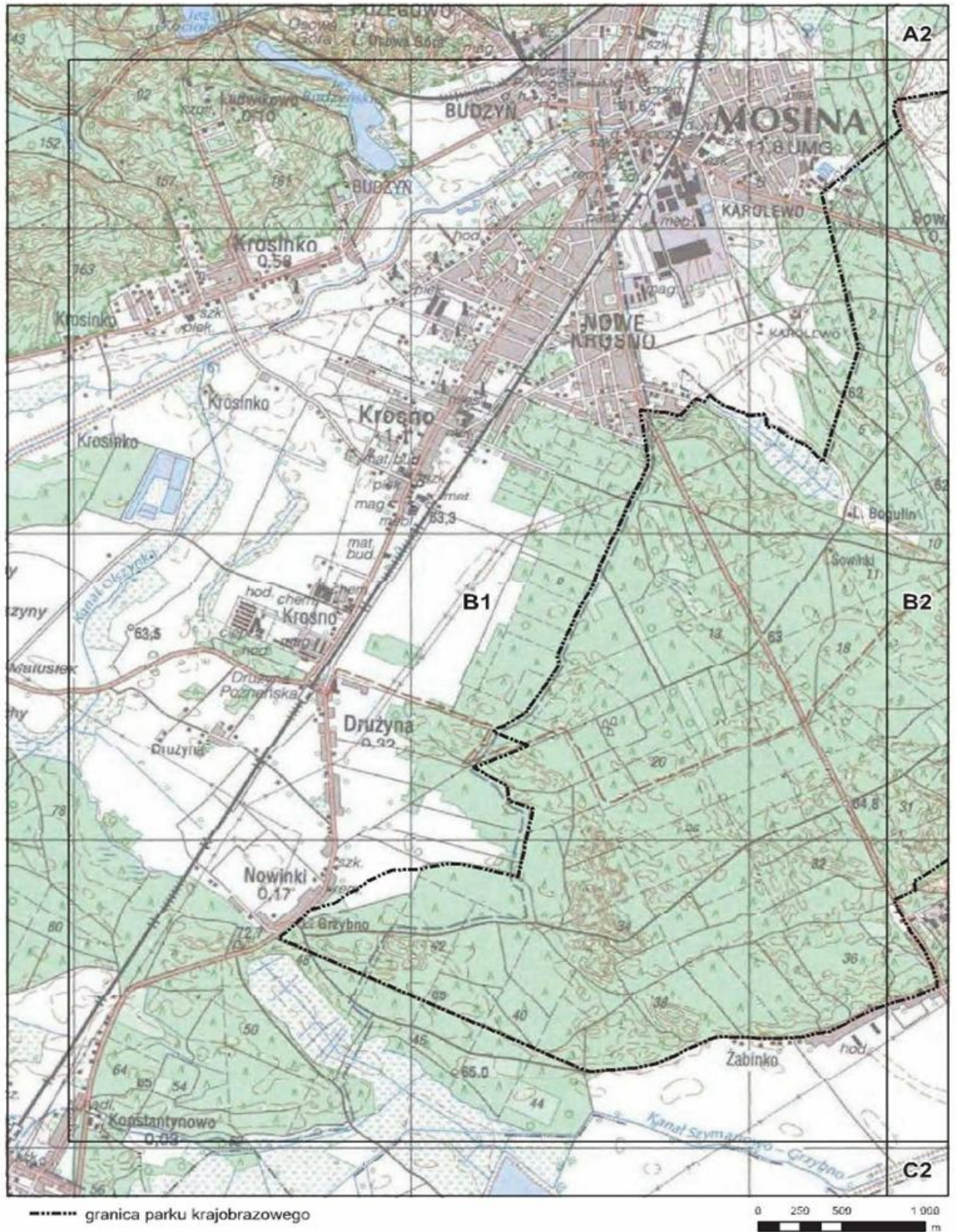


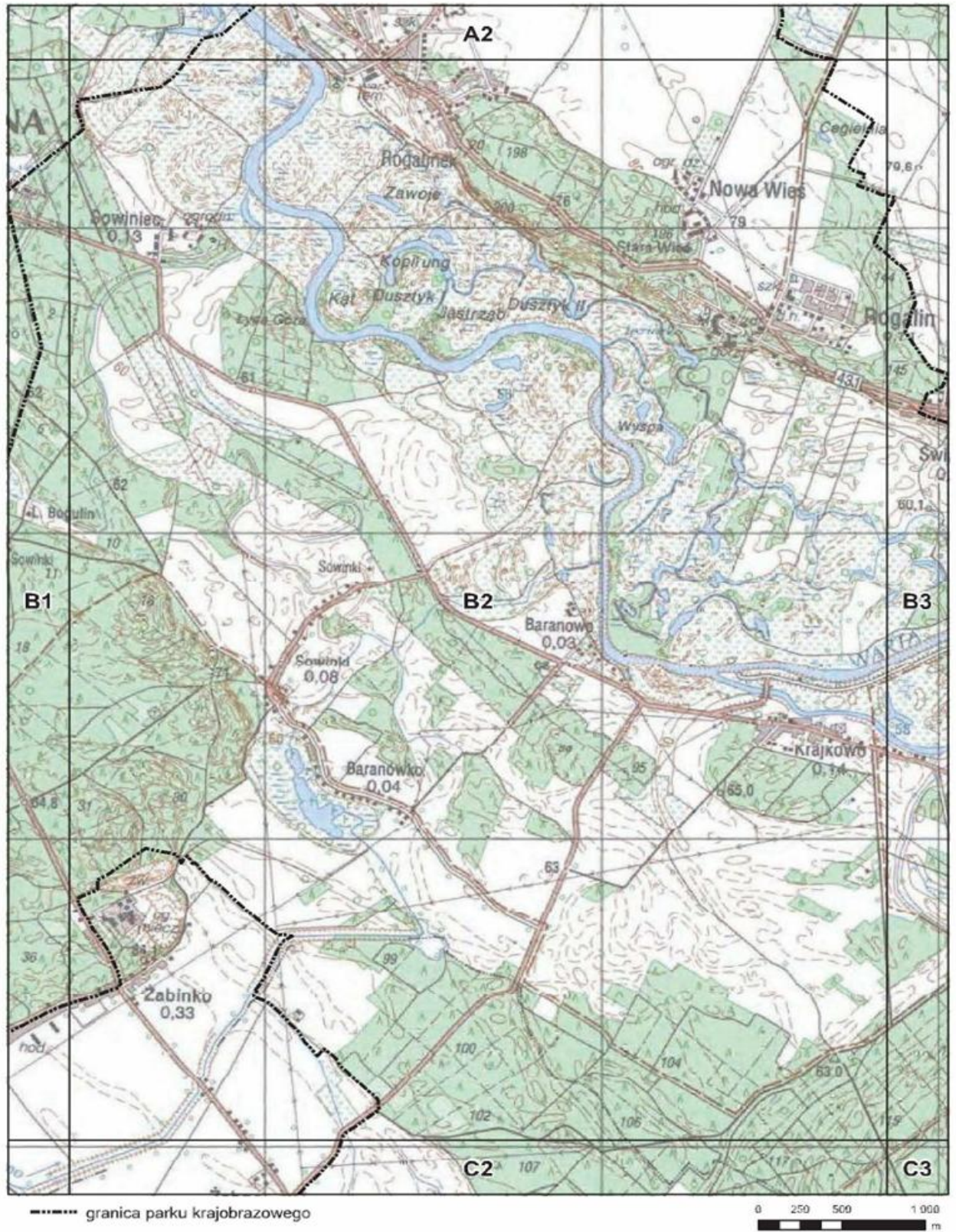
Przebieg granicy
Rogalińskiego Parku Krajobrazowego
(indeks arkuszy)

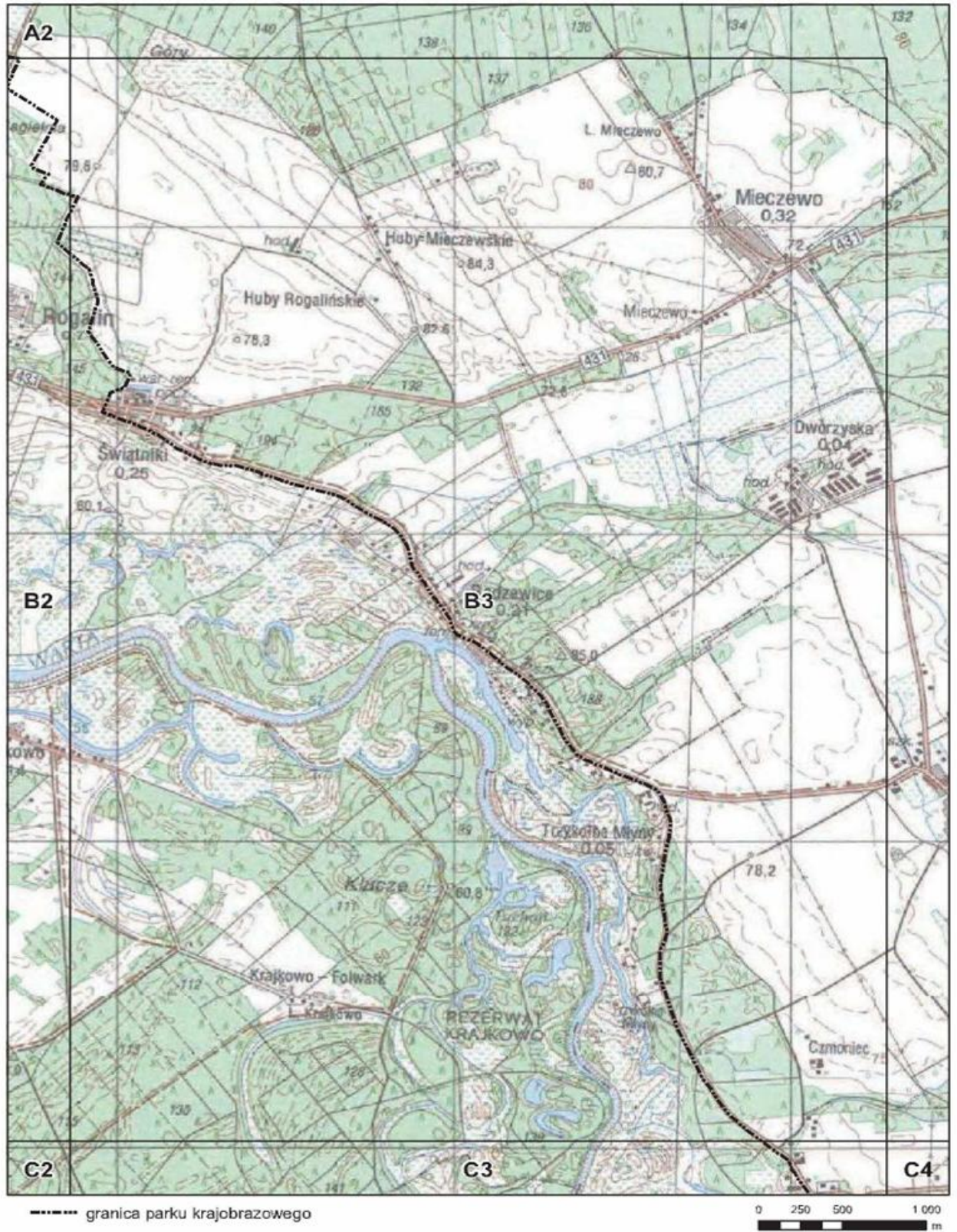
----- granica parku krajobrazowego

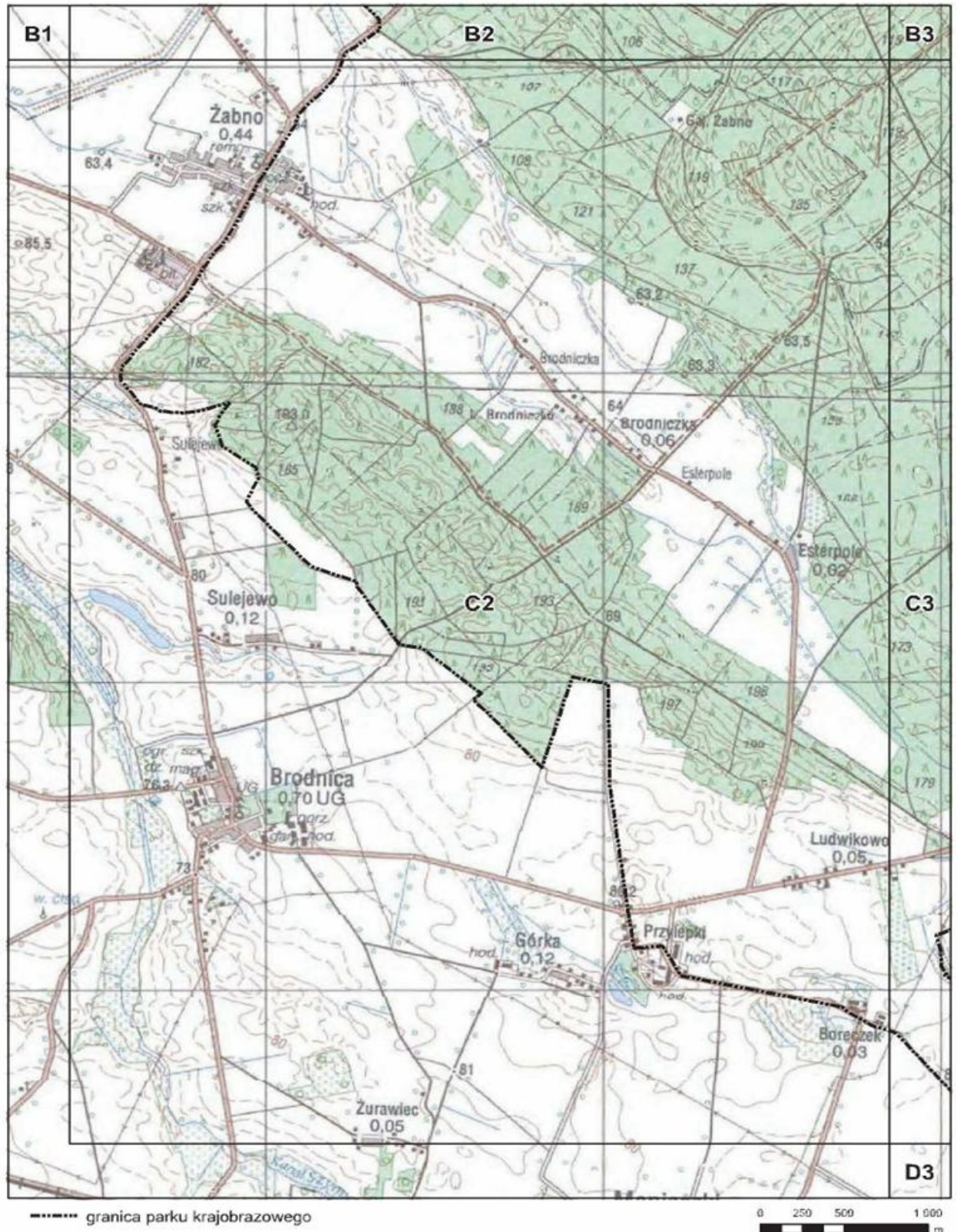
Układ współrzędnych: PL 1992
Odzworowanie: Gaussa-Krügera
Południk środkowy strefy: 19° E

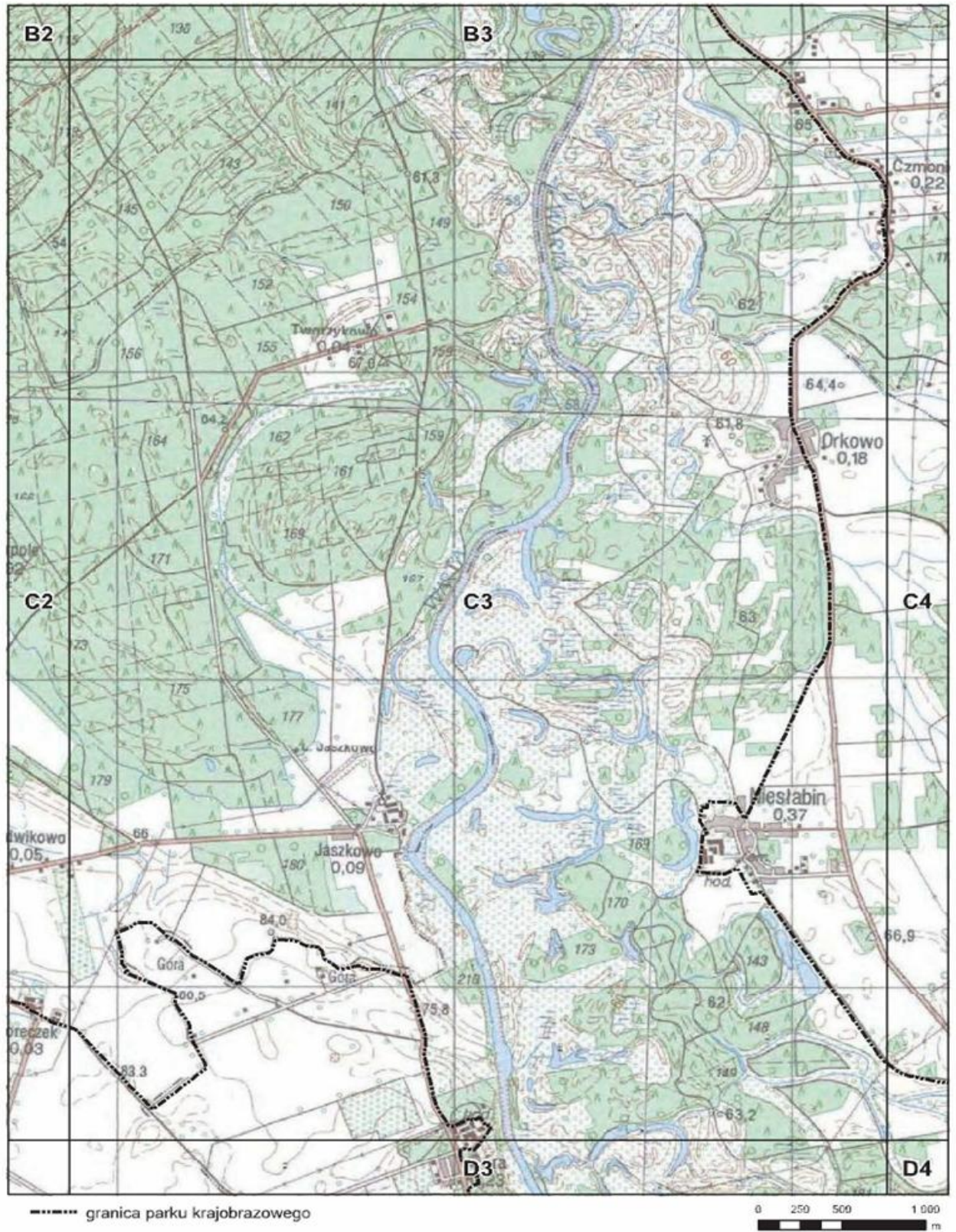


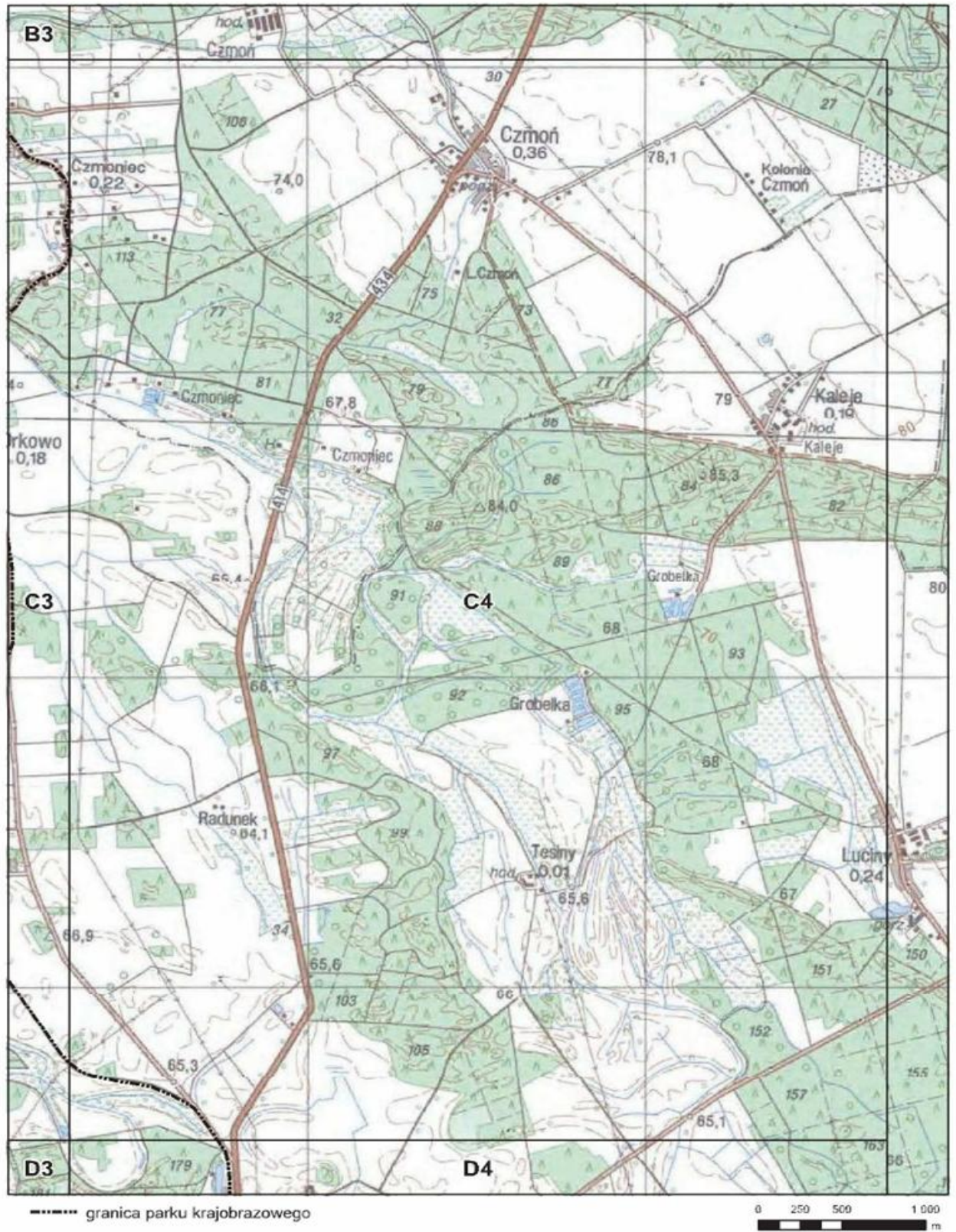




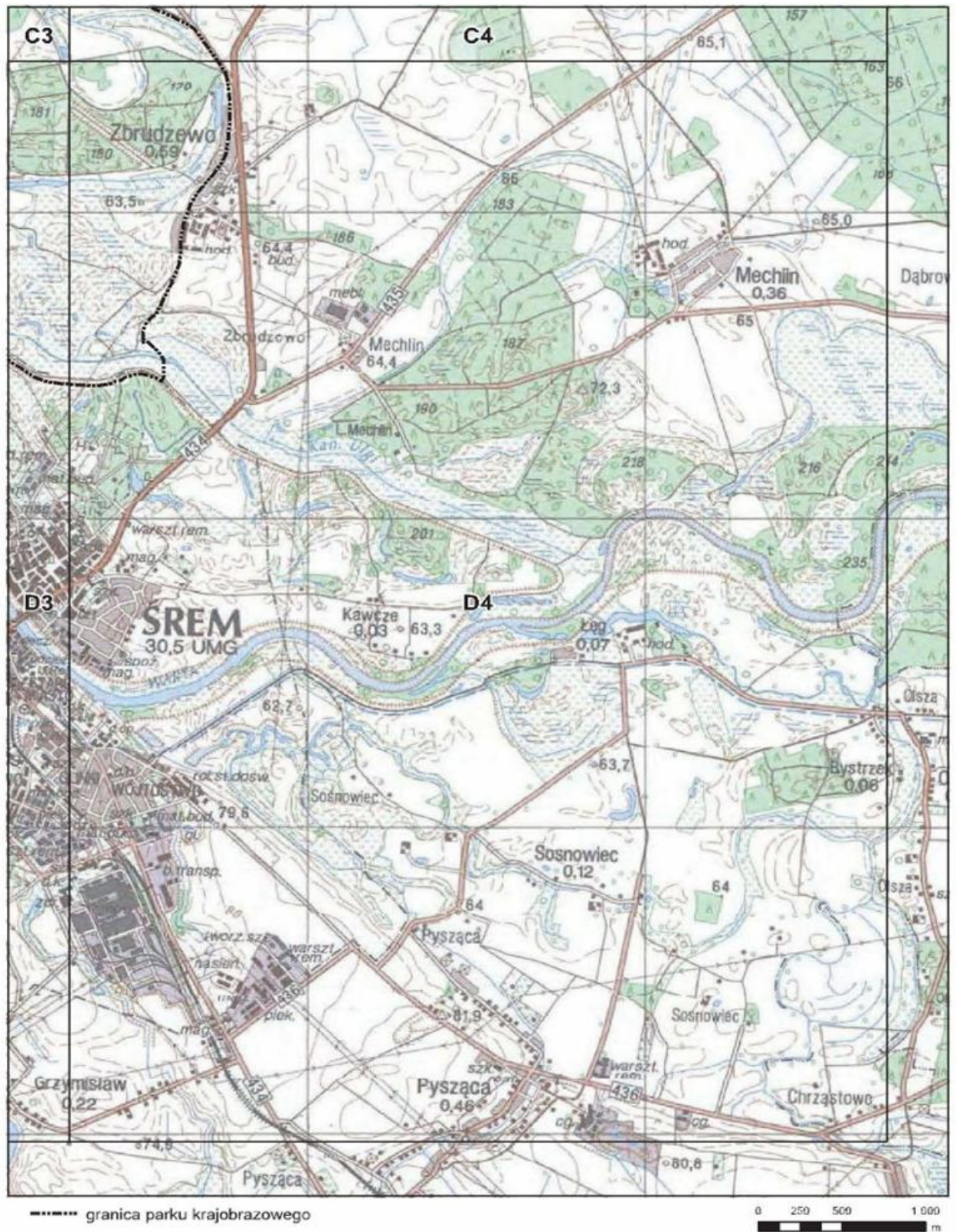












Załącznik nr 2 do Uchwały Nr LI/979/14
Sejmiku Województwa Wielkopolskiego
z dnia 27 października 2014 roku

Wykaz współrzędnych punktów załamania granicy
Rogalińskiego Parku Krajobrazowego
wykonany w układzie współrzędnych
prostokątnych płaskich PL 1992

Numer punktu	Współrzędna X	Współrzędna Y
1	362948.276802	472816.771800
2	362947.414202	472942.079200
3	362925.389102	473012.247800
4	362843.016801	473044.781600
5	362805.369402	473048.349200
6	362797.521902	473056.314500
7	362752.376902	473167.967100
8	362744.496601	473167.016000
9	362731.458901	473163.946800
10	362724.699301	473162.350600
11	362717.949701	473160.754200
12	362711.179901	473159.148000
13	362704.380201	473157.542300
14	362697.580501	473155.936600
15	362690.810801	473154.330500
16	362684.011201	473152.734800
17	362677.201501	473151.129200
18	362670.401501	473149.503500
19	362663.591901	473147.907900
20	362656.782201	473146.302400
21	362649.972401	473144.686800
22	362643.263001	473143.109800
23	362635.149301	473141.182300
24	362624.320002	473138.630000
25	362619.168501	473125.478200
26	362601.920002	473081.290000
27	362594.080002	473075.000000
28	362574.850002	473039.220000
29	362568.340002	473034.960000
30	362520.788101	473176.606000
31	362511.700101	473204.081500
32	362500.147301	473239.138300
33	362488.537301	473274.385900
34	362476.879601	473309.804000
35	362465.154301	473345.393000
36	362457.065701	473369.955800
37	362453.361101	473381.132900
38	362441.459901	473417.014200
39	362429.520701	473453.046000
40	362417.513901	473489.238600
41	362405.488101	473525.511500
42	362393.385701	473562.025400
43	362377.818101	473608.953300
44	362361.060001	473657.996900
45	362344.586701	473706.666800
46	362342.272201	473713.536200
47	362313.630002	473798.830000
48	362280.296251	473897.988905
49	362259.016601	473961.276100
50	362194.738901	474152.764300
51	362166.600002	474245.340000
52	362160.658401	474273.721200
53	362160.283401	474275.525800
54	362158.510701	474283.987200
55	362139.076301	474376.752300
56	362137.651501	474382.899700
57	362128.755001	474421.368700
58	362113.650002	474486.630000
59	362093.637902	474580.996300
60	362070.236501	474685.471900
61	362132.142202	474723.745000
62	362115.707102	474786.789200
63	362065.552201	474788.050200
64	362060.158602	474805.778300
65	362040.152202	474871.540800
66	362032.748402	474871.073100
67	362022.151202	474920.331700
68	362029.499402	474942.152700
69	362051.972601	474949.490300
70	362109.662202	474938.608800
71	362121.693602	474960.055400
72	362132.390202	474976.042200
73	362205.226802	475085.019500
74	362200.403202	475099.141000
75	362175.532202	475096.974700
76	362140.340101	475150.320900
77	362094.307602	475135.180900
78	362088.678502	475148.153900
79	361981.024002	475093.567400
80	361953.070802	475099.870600
81	361934.303702	475138.765500
82	361906.693402	475182.280800
83	361883.517202	475225.485000
84	361873.969602	475260.954100
85	361871.234302	475272.107900
86	361869.170602	475280.493400
87	361863.784102	475305.268900
88	361853.605502	475352.982300

89	361843.746102	475399.191900
90	361832.048702	475453.484000
91	361821.836202	475499.458500
92	361814.796702	475531.954100
93	361812.417102	475548.601000
94	361810.289302	475566.114200
95	361812.176502	475587.720500
96	361816.726402	475619.746500
97	361819.297802	475631.516800
98	361819.926902	475634.367200
99	361820.759202	475638.184300
100	361820.942002	475642.020500
101	361821.278702	475649.763100
102	361820.927102	475669.950800
103	361819.023002	475680.483300
104	361815.756102	475694.403400
105	361808.529402	475718.394600
106	361801.562102	475743.071900
107	361797.358202	475758.634400
108	361785.002902	475804.358600
109	361766.711602	475865.439200
110	361747.556802	475934.958700
111	361737.273002	475970.677900
112	361734.725802	475979.519900
113	361731.463002	475990.840900
114	361715.263402	476048.473900
115	361714.634902	476050.741700
116	361705.067202	476084.751600
117	361691.479302	476078.031300
118	361667.762402	476080.547500
119	361618.678602	476102.226600
120	361597.128302	476106.002400
121	361596.334002	476107.842700
122	361580.260502	476115.881500
123	361556.087502	476121.572700
124	361476.314602	476119.323400
125	361459.096702	476120.480400
126	361449.622102	476124.259700
127	361442.225502	476143.175100
128	361407.890102	476140.449400
129	361311.690402	476119.153300
130	361299.322002	476125.481700
131	361275.396302	476143.315300
132	361213.059302	476189.808400
133	361203.503202	476240.612200
134	361191.794502	476251.289900
135	361177.457002	476264.153100
136	361105.500002	476274.141700
137	361053.419001	476298.841100
138	361041.416401	476303.425000
139	361036.354802	476305.354100
140	361018.742802	476308.385900
141	360980.920401	476310.876500
142	360977.075302	476311.129400
143	360955.971902	476312.519900

144	360920.812902	476308.796000
145	360903.758502	476249.292100
146	360893.868202	476234.513700
147	360884.141402	476228.699800
148	360870.522202	476224.059300
149	360824.006602	476216.663200
150	360808.408002	476214.189200
151	360753.711702	476193.480600
152	360705.076502	476019.972200
153	360690.045002	476029.636100
154	360652.471502	476053.805600
155	360640.615402	476064.665300
156	360583.393702	476106.599500
157	360520.560402	476152.629700
158	360510.495202	476159.246200
159	360502.015002	476164.821100
160	360460.148902	476192.318700
161	360431.500602	476208.398100
162	360424.120202	476212.528400
163	360409.836202	476223.481500
164	360376.697302	476266.233400
165	360352.824502	476286.455500
166	360326.316402	476306.224000
167	360321.472802	476308.739900
168	360280.945202	476330.361200
169	360194.532202	476422.230400
170	360088.773502	476425.437600
171	360066.465402	476399.624200
172	360006.857302	476372.865500
173	359974.990002	476362.818400
174	360004.291302	476249.794000
175	360008.020602	476155.555600
176	360043.818802	476101.940800
177	360030.368602	476103.035900
178	360025.316102	476103.445400
179	360034.293802	476094.804600
180	360040.863502	476091.325300
181	360097.433402	476065.924200
182	360116.985602	476057.147700
183	360202.335702	476018.714400
184	360333.736302	475959.003600
185	360328.197702	475933.578900
186	360320.413102	475898.228600
187	360394.365002	475786.378300
188	360399.936402	475777.924400
189	360406.795202	475756.247500
190	360417.697802	475695.788400
191	360424.713002	475662.983200
192	360434.486502	475637.377400
193	360439.856502	475627.356900
194	360447.036502	475615.931900
195	360479.094102	475557.830400
196	360499.960302	475513.838100
197	360511.119102	475476.317500
198	360345.887841	475336.255767

199	360189.922102	475205.061000
200	360080.073302	475330.011600
201	359967.471602	475459.038800
202	359857.064002	475585.516600
203	359740.351402	475718.719200
204	359729.741102	475727.132500
205	359716.827702	475733.088500
206	359670.266702	475748.515000
207	359621.924402	475764.525900
208	359585.914802	475778.147600
209	359565.219502	475791.018500
210	359561.169502	475794.543100
211	359556.202002	475796.051000
212	359547.518002	475807.146900
213	359534.745302	475813.150900
214	359453.938002	475856.270000
215	359428.080902	475885.556200
216	359419.809002	475891.738100
217	359407.330302	475895.868700
218	359216.527502	475936.525200
219	359172.854402	475944.624600
220	358808.221702	476022.964700
221	358708.700102	476043.539800
222	358698.729502	476046.146300
223	358526.074502	476084.943400
224	358461.411502	476095.421300
225	358460.534402	476106.489500
226	358442.977602	476120.056900
227	358441.250602	476123.129600
228	358427.738802	476146.597800
229	358398.604402	476205.738900
230	358382.524102	476229.242500
231	358344.775102	476291.461300
232	358232.495302	476281.393000
233	358191.639202	476277.747600
234	358176.730202	476276.713500
235	358172.051602	476307.157400
236	358170.731102	476317.242100
237	358168.696702	476332.105000
238	358166.662302	476346.967900
239	358162.667502	476376.252800
240	358157.181702	476416.304500
241	358142.236302	476508.368600
242	358140.199702	476526.690400
243	358139.189202	476537.510500
244	358131.359402	476596.068200
245	358035.365802	477304.086000
246	358023.664802	477992.588400
247	358014.048602	477994.800200
248	357811.572902	478038.597400
249	357763.715002	477888.899300
250	357737.461702	477801.711600
251	357721.087202	477747.316300
252	357694.477902	477662.582600
253	357625.173602	477448.062700

254	357499.874803	477590.031400
255	357362.858903	477743.517800
256	357228.717603	477885.088800
257	357223.111203	477891.004000
258	357269.978003	477931.103800
259	357125.247603	478052.168000
260	356984.963703	478169.462200
261	356916.033503	478227.172900
262	356795.869103	478247.773000
263	356785.052003	478256.419200
264	356778.003803	478242.591200
265	356775.273703	478243.968400
266	356776.775103	478262.961100
267	356761.502303	478285.574000
268	356708.695803	478364.265100
269	356619.101603	478498.034700
270	356611.497903	478509.175700
271	356531.501203	478626.328600
272	356529.922403	478660.448600
273	356373.910503	478715.871300
274	356267.223603	478754.759400
275	356252.032403	478764.445600
276	356115.922003	478906.024200
277	356108.377303	478914.195400
278	356002.900003	479028.491000
279	355946.961603	479089.561500
280	355898.517903	479142.461600
281	355878.498603	479172.467400
282	355873.859803	479181.858100
283	355875.844203	479190.927600
284	355929.539103	479299.919600
285	355946.045503	479333.420400
286	355931.354903	479402.609200
287	355841.171603	479462.472600
288	355825.397903	479473.406400
289	355729.043603	479541.022300
290	355687.145603	479678.593000
291	355691.436103	479686.711100
292	355717.670403	479742.040200
293	355769.280303	479817.992200
294	355754.313003	479817.089000
295	355709.117503	479803.966900
296	355656.956403	479787.362100
297	355633.864003	479780.812900
298	355579.048103	479765.254400
299	355577.301903	479764.758700
300	355497.589703	479756.091200
301	355478.006903	479753.952100
302	355467.525903	479755.066200
303	355436.891103	479758.307700
304	355398.130803	479762.401000
305	355368.184703	479765.563000
306	355356.905203	479772.566200
307	355337.289903	479784.742600
308	355327.344503	479787.728700

309	355286.815703	479799.863600
310	355254.739101	479809.462800
311	355248.692701	479805.947400
312	355211.262501	479854.297200
313	355195.481601	479874.867800
314	355168.373301	479910.559600
315	355140.483201	479947.561600
316	355125.323201	479968.203700
317	355124.536301	479989.437300
318	355124.376401	480002.485000
319	355131.682401	480045.149600
320	355138.365201	480066.540100
321	355143.078201	480072.673000
322	355148.240801	480070.092700
323	355173.991701	480104.865500
324	355188.985901	480125.111800
325	355214.390603	480159.429600
326	355281.029401	480240.012700
327	355322.959003	480289.597300
328	355398.036403	480380.430500
329	355412.916703	480398.219100
330	355468.016203	480464.066400
331	355521.875903	480527.001800
332	355557.427703	480586.730900
333	355599.263803	480662.147800
334	355614.338303	480697.647700
335	355625.425703	480710.780200
336	355638.617803	480729.381900
337	355673.724803	480789.476900
338	355718.327803	480837.195200
339	355746.735403	480876.869700
340	355748.838103	480880.739300
341	355838.686903	481040.904700
342	355851.223203	481067.042800
343	355903.106503	481165.703100
344	355915.180403	481174.983400
345	355914.239303	481187.921900
346	355913.390203	481190.142800
347	355921.236703	481206.758900
348	355932.285503	481230.138400
349	355954.772801	481276.892100
350	355968.976901	481304.356700
351	355972.508601	481302.398600
352	355977.854901	481311.681700
353	355991.974503	481335.198800
354	355999.048903	481348.016800
355	356053.909403	481442.197500
356	356055.087003	481444.950300
357	356064.524403	481460.944600
358	356065.639903	481462.818600
359	356073.981703	481476.928600
360	356094.247103	481511.167200
361	356114.451503	481545.326700
362	356138.780603	481586.456900
363	356162.451703	481624.817100

364	356166.056203	481630.305500
365	356166.779103	481631.984900
366	356167.569703	481636.392500
367	356168.322803	481641.710300
368	356168.478603	481646.486500
369	356171.098703	481655.977100
370	356182.022603	481691.324200
371	356190.113703	481704.648000
372	356205.279603	481721.403000
373	356209.224303	481726.186900
374	356221.605003	481741.041000
375	356230.132103	481749.740300
376	356239.537803	481760.536800
377	356245.658203	481767.240100
378	356251.862003	481773.472300
379	356263.566203	481784.936900
380	356276.058803	481797.760100
381	356286.246503	481807.996000
382	356313.291903	481835.153500
383	356338.956503	481863.669600
384	356365.930903	481893.647100
385	356384.261603	481917.346000
386	356414.304003	481961.756200
387	356417.841903	481966.765600
388	356456.214203	482088.924100
389	356468.130903	482102.025200
390	356475.351903	482105.904200
391	356487.153103	482114.258500
392	356562.549403	482171.678400
393	356564.510603	482173.260800
394	356651.836603	482238.933200
395	356663.840603	482247.494600
396	356670.857203	482252.496000
397	356667.866703	482270.501100
398	356666.881401	482306.332300
399	356659.512201	482323.598100
400	356647.221101	482339.882000
401	356625.892101	482358.260000
402	356616.684701	482366.194300
403	356576.040601	482408.360600
404	356534.931201	482440.716700
405	356492.078801	482481.504000
406	356471.547201	482503.339800
407	356447.508201	482528.902700
408	356434.330001	482546.818300
409	356405.447301	482598.079200
410	356340.478101	482651.597300
411	356330.499703	482639.869000
412	356301.783703	482606.106900
413	356224.403803	482698.392900
414	356188.891703	482761.851100
415	356018.243603	482946.872300
416	356013.529103	482951.505800
417	355938.609401	482986.617600
418	355918.148101	482998.335900

419	355938.875301	483026.180300
420	355935.099201	483026.372300
421	355925.476606	483026.865606
422	355929.130112	483031.273689
423	355971.674593	483094.523710
424	355983.861257	483116.903735
425	355993.364923	483139.496934
426	356059.058142	483284.692333
427	356078.172125	483326.260945
428	356090.732087	483345.336913
429	356099.361983	483354.134003
430	356102.434868	483357.252421
431	356107.151570	483361.166756
432	356112.227373	483364.579328
433	356114.723709	483365.959254
434	356137.435486	483379.877516
435	356142.004062	483384.357676
436	356149.464970	483388.992758
437	356057.846176	483399.468155
438	356020.319050	483431.472060
439	355999.437933	483450.533270
440	355979.863608	483468.887793
441	355946.685354	483498.314733
442	355935.694988	483507.973778
443	355913.956941	483527.948797
444	355889.170737	483542.703915
445	355861.262347	483570.632163
446	355832.989501	483601.009413
447	355811.736912	483622.298254
448	355792.841007	483641.074095
449	355773.745102	483660.521071
450	355733.846557	483701.463961
451	355709.680072	483728.607228
452	355679.395885	483744.646676
453	355663.928890	483752.898402
454	355656.302516	483756.910037
455	355626.708149	483794.419921
456	355619.059545	483804.636316
457	355594.364290	483836.006389
458	355569.342458	483867.169352
459	355566.111244	483864.982148
460	355558.206652	483859.631544
461	355529.093430	483903.145989
462	355524.613242	483909.842361
463	355495.948034	483881.868675
464	355488.892391	483865.422390
465	355487.351391	483867.019472
466	355462.942580	483917.016484
467	355456.205176	483919.278742
468	355276.670232	483961.601441
469	355262.645629	483950.979109
470	355115.193897	483839.335640
471	355061.595726	483798.696316
472	355034.697572	483778.404806
473	354986.485155	483753.776252

474	354992.028147	483692.568961
475	354873.208973	483635.911998
476	354881.150219	483618.302845
477	354870.686886	483615.549730
478	354892.942015	483569.724699
479	354905.990861	483542.509610
480	354915.163067	483525.701365
481	354921.878602	483513.373000
482	354930.937195	483495.208090
483	354962.153962	483432.621826
484	354967.728949	483424.020941
485	355045.456435	483307.889820
486	355051.555855	483293.687520
487	355066.738681	483256.734741
488	355077.814545	483230.362994
489	355093.358867	483193.315201
490	355100.626862	483175.678080
491	355114.248336	483135.424202
492	355117.641555	483124.200540
493	355124.881435	483078.748339
494	355125.990311	483070.104106
495	355119.393002	483068.308983
496	355121.859070	483056.090601
497	355090.998026	483040.876273
498	355072.587566	483034.188450
499	355041.598966	483022.036264
500	355037.048390	483020.251751
501	355006.048279	483008.195473
502	354968.662910	482992.614689
503	354881.736328	482966.768977
504	354859.659880	482960.154102
505	354854.189140	482958.384711
506	354818.939729	482946.476242
507	354748.241804	482917.934493
508	354737.924479	482912.968207
509	354711.625980	482900.155169
510	354678.418742	482884.324993
511	354645.708239	482863.503212
512	354576.502480	482824.614708
513	354546.694771	482807.865057
514	354503.176917	482783.411422
515	354482.682899	482771.895411
516	354478.754467	482771.266789
517	354455.221284	482767.501051
518	354435.912562	482764.104836
519	354421.045683	482762.133840
520	354400.519470	482759.412554
521	354395.694123	482758.108566
522	354389.151831	482756.340596
523	354371.567377	482751.588631
524	354322.097854	482738.220173
525	354284.365977	482733.481061
526	354241.663071	482730.474393
527	354237.913991	482730.469408
528	354131.248861	482726.466908

529	354105.917175	482725.642495
530	354073.673873	482727.704962
531	354069.877178	482727.836834
532	354010.640707	482731.715282
533	353956.543593	482735.219376
534	353905.234409	482735.426925
535	353841.431832	482738.863464
536	353810.248844	482736.730894
537	353777.228719	482726.160237
538	353692.999805	482685.243895
539	353629.193157	482654.271652
540	353585.110531	482627.710148
541	353563.536788	482615.365686
542	353447.888719	482564.116448
543	353396.317881	482551.435687
544	353345.777734	482538.739374
545	353317.013263	482533.498843
546	353130.682209	482517.273680
547	353132.630707	482515.930793
548	353059.093857	482510.766154
549	353036.662055	482515.248862
550	353026.855682	482517.444968
551	352730.111324	482657.827948
552	352430.299417	482799.662506
553	352082.208839	482964.337293
554	351748.874386	483122.032204
555	351200.762851	483381.337819
556	351217.076353	483399.472767
557	351257.367540	483430.657291
558	351301.631297	483475.130305
559	351379.396628	483555.841806
560	351415.606130	483574.094736
561	351453.873649	483585.126495
562	351478.613739	483592.462618
563	351501.105547	483599.132066
564	351529.206613	483607.305638
565	351545.800768	483620.036368
566	351564.610712	483634.473812
567	351574.417242	483641.987222
568	351583.043359	483648.632136
569	351599.166950	483661.052540
570	351619.605047	483676.529332
571	351643.863682	483686.196254
572	351663.313116	483693.946739
573	351683.203761	483710.914759
574	351703.094409	483727.882779
575	351720.101502	483742.365230
576	351735.146175	483755.192505
577	351875.028366	483823.794643
578	351885.813168	483823.993564
579	352018.832525	483826.654262
580	352082.124653	483839.204847
581	352119.133021	483850.166972
582	352212.520047	483867.717370
583	352292.889916	483863.026326

584	352476.403406	483816.823916
585	352624.007267	483780.576805
586	352631.792470	483819.172909
587	352649.709927	483908.000795
588	352659.043830	483954.274641
589	352670.872632	484012.917151
590	352678.912960	484052.777874
591	352694.231352	484123.749584
592	352704.773619	484170.462992
593	352714.820365	484221.699077
594	352616.266342	484256.398575
595	352582.243547	484268.997739
596	352572.262546	484271.031997
597	352559.300103	484363.098244
598	352556.761543	484374.002979
599	352496.475061	484409.027861
600	352416.209676	484454.899365
601	352372.145195	484485.311331
602	352363.260778	484491.033559
603	352437.744289	484523.384708
604	352488.271548	484545.644601
605	352515.375224	484557.286007
606	352541.603734	484568.901814
607	352566.357697	484579.719220
608	352591.694245	484590.786409
609	352611.182543	484599.437018
610	352630.768078	484608.003956
611	352649.736163	484616.013464
612	352670.006257	484624.894034
613	352687.896519	484632.790479
614	352476.364920	484724.155555
615	352502.734927	484749.292416
616	352538.427286	484760.902589
617	352671.569276	484850.874503
618	352691.447093	484873.492783
619	352683.191230	484876.931061
620	352719.914840	484927.475672
621	352761.835443	484990.909757
622	352797.826472	485045.371365
623	352868.789004	485161.511294
624	352858.520068	485214.020713
625	352924.579650	485378.400901
626	352998.750728	485548.835533
627	353064.656199	485669.494463
628	353090.176841	485746.295781
629	353105.950685	485794.520615
630	353108.752245	485803.085624
631	353134.192061	485856.572946
632	353165.721379	485933.017553
633	353179.648748	485965.861320
634	353195.921773	486004.815443
635	353218.734034	486034.655649
636	353227.712969	486067.431207
637	353288.903111	486221.416544
638	353294.727937	486233.813092

639	353308.758158	486264.643180
640	353365.535616	486381.178565
641	353396.493674	486457.433609
642	353403.132403	486489.142226
643	353397.865343	486509.725820
644	353386.949439	486582.557217
645	353382.066251	486616.752527
646	353379.527699	486634.568475
647	353376.988827	486652.374431
648	353374.360903	486670.833409
649	353369.472954	486704.568760
650	353364.765465	486738.628400
651	353359.681080	486773.410322
652	353357.620902	486789.463941
653	353355.613652	486807.100055
654	353353.250041	486819.479576
655	353368.432408	486818.476233
656	353508.884912	486803.711112
657	353592.497069	486779.549682
658	353595.554852	486783.333326
659	353623.444133	486818.685045
660	353634.538211	486832.747605
661	353664.900119	486870.031818
662	353672.694790	486879.252015
663	353686.434433	486895.785973
664	353724.834392	486878.318204
665	353734.742110	486873.770509
666	353766.092990	486922.948783
667	353800.848918	486886.679868
668	353855.259689	486844.448128
669	353908.512793	486824.070713
670	353976.845960	486798.660227
671	353994.634783	486786.371499
672	353995.787763	486785.575008
673	354033.282729	486788.031336
674	354095.508408	486792.107796
675	354108.360734	486710.315659
676	354159.830194	486710.272653
677	354187.476108	486687.831287
678	354241.721036	486643.798383
679	354266.393821	486629.161538
680	354322.662420	486599.178533
681	354359.572148	486579.511005
682	354440.719843	486481.919218
683	354455.562789	486538.001271
684	354459.189541	486551.704597
685	354489.031432	486654.452837
686	354524.994971	486776.484139
687	354533.712938	486806.796431
688	354560.616986	486900.341311
689	354563.264907	486909.805212
690	354594.449920	487014.376935
691	354627.896965	487128.742654
692	354642.692374	487180.110796
693	354654.571290	487220.922342

694	354655.218451	487222.704614
695	354628.274434	487353.252039
696	354589.318447	487522.908314
697	354586.528865	487535.854755
698	354585.560407	487540.349368
699	354551.895986	487696.586055
700	354536.939546	487759.963169
701	354514.717547	487859.789949
702	354488.741029	487977.930733
703	354462.893791	488095.420205
704	354462.165694	488098.795157
705	354460.219985	488107.545261
706	354452.003036	488146.004385
707	354433.896494	488230.751468
708	354445.723866	488242.838180
709	354536.489364	488322.895731
710	354545.076092	488330.469407
711	354555.230172	488339.425614
712	354608.019274	488385.986977
713	354620.075613	488396.620935
714	354641.730231	488415.720916
715	354906.056420	488648.591943
716	354889.145556	488700.635930
717	354868.608548	488764.873854
718	354866.708046	488791.101627
719	354870.003332	488810.785069
720	354872.417604	488824.921004
721	354877.127265	488840.672149
722	354883.884121	488841.847359
723	355215.989686	488900.408573
724	355341.239354	488922.494199
725	355351.543461	488911.672011
726	355461.407206	489010.827650
727	355477.424171	489037.348507
728	355500.574540	489070.875910
729	355519.890182	489098.849695
730	355538.069606	489125.177964
731	355557.271618	489152.987198
732	355608.514843	489227.200008
733	355612.491589	489232.959317
734	355618.740761	489242.009660
735	355631.251567	489244.578783
736	355643.732937	489247.141860
737	355656.224119	489249.706951
738	355739.212997	489273.557924
739	355839.708003	489372.542776
740	355842.484244	489375.532077
741	355849.768864	489382.553556
742	355865.517599	489396.453755
743	355922.467422	489443.214171
744	355864.427332	489510.138060
745	355818.917559	489608.969002
746	355806.101887	489668.864092
747	355807.439353	489676.457237
748	355870.854724	489785.174536

749	355882.568307	489800.141840
750	356008.938076	489964.132354
751	356048.092912	489944.718400
752	356054.352745	489942.796815
753	356075.670222	489959.365846
754	356114.245267	489989.113538
755	356116.252807	489990.889460
756	356117.671169	490004.837198
757	356124.154800	490034.475908
758	356125.923656	490042.520980
759	356135.208612	490084.942686
760	356145.254809	490130.820723
761	356123.071259	490121.541274
762	356113.603630	490120.609433
763	356107.894268	490199.887304
764	356123.726127	490201.068915
765	356120.915558	490223.174394
766	356117.338306	490249.435472
767	356117.189912	490250.420470
768	356128.932827	490256.024492
769	356125.668336	490268.672333
770	356107.805657	490292.071704
771	356091.083838	490311.753549
772	356086.376807	490317.796190
773	356072.678558	490328.538805
774	356063.526836	490335.714513
775	356053.659782	490343.663383
776	356041.221020	490353.135234
777	356012.216966	490367.860540
778	355958.135366	490395.304524
779	355830.252500	490424.655008
780	355767.666141	490429.817806
781	355743.717957	490430.202906
782	355684.682131	490438.450946
783	355659.252010	490440.248442
784	355582.623150	490444.892672
785	355584.146890	490438.971628
786	355563.821810	490434.996271
787	355456.023598	490445.612962
788	355439.696357	490461.285220
789	355361.310301	490457.491974
790	355339.505145	490472.919416
791	355311.966859	490467.071760
792	355248.845619	490502.694503
793	355220.331650	490531.047357
794	355181.931408	490555.292803
795	355165.811305	490605.658743
796	355174.168090	490675.815790
797	355224.595147	490811.256146
798	355268.318945	490945.750277
799	355269.724789	490963.492555
800	355279.422324	490985.581107
801	355285.853213	491050.344217
802	355292.692572	491131.328932
803	355290.988458	491209.173590

804	355283.632399	491223.592268
805	355266.219949	491285.511272
806	355246.507687	491336.220483
807	355204.786154	491426.137471
808	355175.874371	491473.055900
809	355124.447631	491533.048602
810	355086.825309	491557.140251
811	355039.541788	491582.318045
812	355006.843327	491592.254486
813	354949.060831	491639.135692
814	354924.000020	491655.842555
815	354902.010879	491684.784415
816	354884.546670	491731.576194
817	354905.946953	491806.130025
818	354924.667890	491821.469097
819	354965.461812	491920.182521
820	355000.074024	491983.452144
821	355015.382851	491998.395072
822	355051.922186	492046.450510
823	355058.421620	492073.879414
824	355081.509548	492108.577373
825	355106.087732	492134.765034
826	355170.980162	492227.102061
827	355179.868479	492246.821697
828	355208.711386	492286.706225
829	355252.903159	492342.064107
830	355281.544691	492381.845995
831	355312.599979	492422.234375
832	355341.440440	492457.563380
833	355382.819167	492523.111277
834	355446.150279	492631.925817
835	355467.068058	492694.866250
836	355506.184704	492814.536179
837	355526.614884	492881.901047
838	355534.825462	492960.995540
839	355542.661974	493035.996350
840	355545.932562	493076.939075
841	355554.555470	493132.369717
842	355562.512319	493227.892265
843	355567.700660	493298.093220
844	355584.981468	493379.633459
845	355605.634115	493444.450715
846	355617.848568	493489.992592
847	355629.843361	493528.700221
848	355653.930607	493578.747122
849	355679.178966	493664.917850
850	355684.714672	493692.640972
851	355681.341318	493694.739865
852	355672.869087	493700.023353
853	355671.441969	493707.280916
854	355688.172301	493736.730205
855	355688.334419	493747.997638
856	355691.882481	493821.350823
857	355686.939532	493920.562919
858	355651.259831	493932.972398

859	355628.901500	493939.102324
860	355635.992293	493941.875110
861	355640.369601	493948.916096
862	355641.095241	493953.753912
863	355655.388314	493970.858611
864	355652.913856	493979.140070
865	355650.849072	493984.607704
866	355634.997216	493998.670405
867	355624.284413	494004.886122
868	355600.240953	494008.379587
869	355600.449613	494015.804623
870	355599.460152	494020.807594
871	355601.770997	494025.484430
872	355579.926478	494048.221748
873	355567.520512	494071.154916
874	355498.770958	494107.153563
875	355433.160058	494152.422656
876	355419.371478	494162.838212
877	355404.543652	494176.707978
878	355377.101231	494191.773409
879	355359.780152	494186.578819
880	355357.745776	494151.605972
881	355337.307670	494147.771868
882	355279.226117	494159.981248
883	355171.806909	494229.889748
884	355153.883708	494275.356442
885	355177.103436	494397.779051
886	355189.302246	494416.321382
887	355209.576775	494447.117065
888	355213.413376	494441.692494
889	355243.924194	494473.229386
890	355275.022318	494518.680666
891	355320.028522	494549.031432
892	355330.645383	494564.723922
893	355352.292607	494576.611035
894	355399.749944	494625.337324
895	355439.883876	494655.964712
896	355488.107606	494685.591875
897	355534.468279	494718.249610
898	355544.146107	494725.890364
899	355581.315329	494756.703060
900	355628.277210	494794.372623
901	355648.134654	494814.059050
902	355657.881927	494817.946702
903	355678.573187	494832.145045
904	355691.183434	494846.683251
905	355717.073269	494876.978199
906	355723.966825	494885.438628
907	355734.842553	494906.694064
908	355740.638589	494923.951817
909	355742.835885	494921.911311
910	355746.650561	494923.968606
911	355779.752929	494966.734726
912	355785.412090	494962.621890
913	355788.149467	494966.564834

914	355783.258512	494969.682749
915	355812.947386	495013.298759
916	355819.729097	495012.990732
917	355850.608768	495055.378173
918	355847.494160	495052.457593
919	355830.515728	495064.766128
920	355877.558997	495112.435306
921	355911.649606	495146.427573
922	355906.218647	495153.593787
923	355946.201379	495186.986534
924	355942.151776	495192.317925
925	355987.373021	495215.669964
926	356025.950682	495243.626585
927	356046.086399	495253.301675
928	356068.643922	495261.148502
929	356079.496879	495249.026880
930	356132.059244	495249.337613
931	356214.002770	495232.980187
932	356306.520761	495198.328685
933	356389.334499	495161.438578
934	356416.778533	495138.651287
935	356470.015304	495122.606598
936	356470.550046	495128.350736
937	356515.060663	495117.467693
938	356543.132185	495118.555749
939	356561.270193	495121.473481
940	356572.901747	495113.347782
941	356576.306049	495110.967823
942	356588.584742	495097.770159
943	356609.598720	495089.962993
944	356641.558863	495081.023770
945	356633.146019	495071.661997
946	356630.739712	495067.438362
947	356637.826854	495065.120055
948	356618.129491	495027.074353
949	356604.763080	495001.458038
950	356600.716249	494993.496265
951	356574.117320	494941.139060
952	356556.072901	494905.350734
953	356553.872252	494900.990454
954	356514.890434	494824.985737
955	356487.060393	494771.357764
956	356463.915032	494725.931118
957	356463.874630	494724.051982
958	356473.532830	494719.880627
959	356762.968995	494594.752238
960	356844.877973	494559.899727
961	356935.805344	494521.198714
962	357030.582034	494480.893655
963	357041.426088	494476.274105
964	357042.126848	494475.981518
965	357044.189158	494475.105041
966	357045.155847	494474.683879
967	357104.853255	494449.279588
968	357118.125788	494443.661769

969	357122.516016	494441.770249
970	357125.456372	494440.515469
971	357126.183110	494440.206293
972	357130.825780	494438.902546
973	357131.795509	494442.932304
974	357133.616982	494470.970181
975	357144.561152	494638.116685
976	357148.550840	494652.391730
977	357158.453476	494686.941380
978	357169.903002	494715.159867
979	357175.297495	494714.016240
980	357251.207809	494889.906782
981	357349.708874	494934.351261
982	357336.217630	494844.174315
983	357322.577279	494753.091939
984	357318.091634	494723.699399
985	357326.836835	494726.599010
986	357330.636217	494727.797181
987	357399.421120	494750.171695
988	357511.794467	494794.590377
989	357661.243680	494812.791542
990	357699.883425	494841.446237
991	357709.594934	494855.737367
992	357759.104465	494928.492697
993	357729.195824	494813.307826
994	357698.356041	494658.263809
995	357737.884721	494635.848383
996	357898.377794	494890.268078
997	357935.948157	494948.941409
998	358001.801859	494924.126370
999	358055.777251	494886.304853
1000	358100.723653	494844.952664
1001	358171.015339	494806.481185
1002	358148.023163	494765.853306
1003	358111.679271	494704.737842
1004	358069.414214	494636.062301
1005	357995.813117	494516.032168
1006	357985.362871	494498.984154
1007	357990.189912	494496.368436
1008	357925.514107	494389.127155
1009	357926.578484	494377.823958
1010	358015.203677	494283.944910
1011	358155.792732	494131.116932
1012	358321.251109	493958.517579
1013	358327.247639	493952.143430
1014	358270.807967	493920.810223
1015	358193.794133	493871.444110
1016	358166.878591	493854.035162
1017	358185.817072	493840.783566
1018	358215.936943	493823.761793
1019	358300.280978	493781.901859
1020	358269.527644	493689.899550
1021	358089.473789	493746.448411
1022	358037.544234	493762.390777
1023	358008.047346	493665.776852

1024	357965.640295	493513.289072
1025	357936.251148	493408.604735
1026	357914.874243	493338.872499
1027	357855.865263	493146.401488
1028	357848.762443	493121.962339
1029	357885.221241	493109.838116
1030	357972.795638	493080.717637
1031	357966.114275	493053.646205
1032	357956.823384	493016.026234
1033	357955.102111	493011.330480
1034	357972.950838	493004.005326
1035	357997.612510	492990.809942
1036	358027.175077	492974.806457
1037	358034.383006	492973.134482
1038	358059.086317	492967.459463
1039	358077.839770	492968.367103
1040	358092.467442	492967.256853
1041	358211.665234	492922.456859
1042	358216.326850	492920.606663
1043	358294.921221	492887.193886
1044	358514.102568	492813.164996
1045	358525.545371	492804.145327
1046	358475.659698	492663.016578
1047	358435.470063	492551.262794
1048	358375.825358	492378.170233
1049	358210.290597	491896.729987
1050	358208.920272	491891.309312
1051	358210.432471	491891.184178
1052	358221.986741	491883.141173
1053	358225.948370	491880.673346
1054	358232.250227	491871.658862
1055	358269.036067	491818.995378
1056	358311.477353	491753.776117
1057	358372.906695	491690.251890
1058	358407.047298	491671.157232
1059	358465.945827	491615.374681
1060	358472.175063	491612.637024
1061	358468.703672	491607.749644
1062	358465.800677	491603.106336
1063	358510.339053	491577.118139
1064	358555.153009	491540.118198
1065	358589.385107	491518.218307
1066	358602.051061	491510.747922
1067	358645.931163	491485.035123
1068	358726.942383	491433.076905
1069	358735.903816	491425.266079
1070	358751.104994	491402.415417
1071	358760.065415	491388.815744
1072	358804.393690	491331.832599
1073	358840.786333	491296.942803
1074	358869.983101	491273.776932
1075	358878.836979	491268.223927
1076	358900.380124	491260.350581
1077	358911.849322	491256.922933
1078	358936.081196	491249.680769

1079	358981.742751	491240.529800
1080	359018.419963	491238.604459
1081	359071.719969	491234.562462
1082	359118.994221	491222.542780
1083	359141.500525	491203.649220
1084	359145.096892	491201.413891
1085	359160.152105	491192.003367
1086	359199.097648	491169.479612
1087	359231.473564	491153.850913
1088	359235.943470	491151.592998
1089	359287.692004	491127.508899
1090	359333.887849	491106.166582
1091	359355.203606	491096.320933
1092	359277.720498	490914.816838
1093	359255.525859	490862.965840
1094	359211.171438	490759.299561
1095	359166.917746	490655.861170
1096	359148.542728	490613.181855
1097	359147.570582	490610.942581
1098	359285.087413	490538.599122
1099	359380.634364	490481.438102
1100	359349.661259	490412.496774
1101	359365.739003	490402.099043
1102	359277.566125	490197.731314
1103	359270.959592	490188.612367
1104	359038.556554	489673.225579
1105	359014.465561	489622.252747
1106	359009.947411	489611.365934
1107	359015.454702	489609.305417
1108	359033.695715	489594.115728
1109	359044.983412	489575.345322
1110	359050.813499	489562.426954
1111	359057.262273	489535.172918
1112	359065.037808	489491.746155
1113	359065.716747	489477.432299
1114	359071.305545	489394.291704
1115	359072.238090	489377.981914
1116	359071.012834	489352.074781
1117	359068.349511	489333.935781
1118	359052.485374	489292.194034
1119	359040.010266	489260.457936
1120	359037.260830	489253.463497
1121	359034.328099	489246.002762
1122	359063.136211	489243.724863
1123	359067.592118	489240.446700
1124	359099.358501	489212.982050
1125	359180.362284	489170.931371
1126	359238.255427	489141.504883
1127	359307.793680	489122.695031
1128	359376.991213	489105.390848
1129	359395.791605	489100.875887
1130	359383.956340	489072.199240
1131	359314.449236	488913.203173
1132	359324.696137	488906.017897
1133	359488.251741	488793.820474

1134	359619.253039	488703.339162
1135	359550.258884	488569.851771
1136	359466.932366	488409.862675
1137	359481.444928	488386.030512
1138	359569.287455	488350.857077
1139	359528.294117	488294.600644
1140	359520.234890	488283.239242
1141	359613.680290	488245.948250
1142	359664.425559	488224.430240
1143	359744.288412	488204.426526
1144	359720.049416	488148.591535
1145	359706.838157	488118.136418
1146	359696.587626	488094.531992
1147	359691.985435	488083.911362
1148	359679.196557	488054.460869
1149	359665.229134	488022.261706
1150	359653.521559	487992.220516
1151	359642.609219	487964.204287
1152	359619.934144	487906.918885
1153	359620.232785	487905.628997
1154	359651.028933	487876.643554
1155	359675.465848	487853.643655
1156	359696.704308	487833.517104
1157	359707.352550	487823.422889
1158	359718.673825	487813.107013
1159	359740.829613	487792.890983
1160	359762.995711	487772.684624
1161	359785.161808	487752.478264
1162	359807.317911	487732.272227
1163	359809.834895	487729.980884
1164	359812.851716	487721.141983
1165	359820.640126	487698.306654
1166	359822.340074	487693.310923
1167	359828.973351	487665.341512
1168	359836.823125	487632.271884
1169	359837.351390	487630.034409
1170	359844.552046	487599.176145
1171	359846.617719	487590.307792
1172	359857.631101	487553.378911
1173	359860.142279	487545.833244
1174	359863.113101	487537.082989
1175	359865.142951	487520.258600
1176	359848.883258	487470.448689
1177	359809.516927	487335.190878
1178	359806.269578	487323.462478
1179	359949.516232	487100.923071
1180	359962.738919	487090.636228
1181	360058.380719	487050.466533
1182	360026.260045	486965.648703
1183	360012.350460	486957.973548
1184	359994.082487	486947.887778
1185	359935.436723	486922.150883
1186	359914.323652	486857.374531
1187	359907.460305	486844.163950
1188	359899.609131	486825.839423

1189	359891.096302	486805.970601
1190	359887.851336	486798.396895
1191	359899.290098	486794.971981
1192	359904.890188	486792.820276
1193	359916.165035	486788.488178
1194	359920.930275	486786.959277
1195	359940.717975	486778.227220
1196	359964.276287	486769.125310
1197	360011.340135	486750.917426
1198	360030.732556	486743.403653
1199	360036.002997	486740.919082
1200	360036.728048	486742.378418
1201	360055.241700	486735.094838
1202	360063.262736	486732.186804
1203	360075.965739	486727.616967
1204	360089.122450	486720.181376
1205	360114.363191	486709.053368
1206	360132.653759	486700.166958
1207	360175.476182	486677.551845
1208	360218.477131	486655.762197
1209	360260.297263	486625.939792
1210	360262.758866	486624.221310
1211	360279.002442	486612.008327
1212	360304.495300	486592.839933
1213	360307.816975	486590.342325
1214	360335.281261	486566.124767
1215	360416.373056	486523.187371
1216	360464.021577	486498.220068
1217	360487.143293	486486.104545
1218	360508.097682	486477.260258
1219	360512.940857	486475.212847
1220	360513.614189	486474.932640
1221	360535.781969	486465.569360
1222	360556.351988	486461.294384
1223	360570.098062	486458.437599
1224	360577.746195	486457.687217
1225	360599.101371	486455.591995
1226	360620.953178	486453.448048
1227	360646.778037	486450.914294
1228	360652.831841	486450.594240
1229	360653.661203	486454.484715
1230	360693.017192	486452.373692
1231	360837.061058	486407.259125
1232	360842.144598	486405.448427
1233	360841.402614	486404.073824
1234	360838.916335	486398.172121
1235	360844.719408	486396.475659
1236	360882.651178	486385.365474
1237	360922.425207	486370.575336
1238	360957.113391	486357.818922
1239	360972.109748	486352.306277
1240	361006.333440	486339.724818
1241	361033.574427	486330.593268
1242	361122.900201	486306.235275
1243	361124.822574	486305.608575

1244	361130.100247	486304.193726
1245	361224.035971	486278.492484
1246	361259.925945	486268.671967
1247	361272.588387	486264.749068
1248	361282.345634	486261.726216
1249	361289.698669	486258.661498
1250	361306.256819	486251.760120
1251	361309.814657	486249.925595
1252	361331.784306	486238.597402
1253	361338.511854	486235.081104
1254	361378.014067	486203.764061
1255	361385.456588	486197.354121
1256	361388.326928	486194.882015
1257	361397.448811	486189.235871
1258	361450.287989	486156.452412
1259	361459.566278	486150.685951
1260	361488.777352	486130.584080
1261	361551.237636	486095.840163
1262	361595.983117	486070.312554
1263	361623.275369	486049.305007
1264	361644.633191	486026.325013
1265	361659.171742	486010.729259
1266	361675.399623	485988.858100
1267	361693.626209	485958.967241
1268	361696.957167	485953.504607
1269	361709.415744	485921.445315
1270	361713.319571	485904.594533
1271	361718.478886	485881.285791
1272	361733.399688	485817.395489
1273	361734.720501	485812.013220
1274	361740.078527	485801.342527
1275	361754.458310	485772.898661
1276	361770.200556	485747.402758
1277	361779.645904	485732.105216
1278	361793.787691	485709.201401
1279	361812.993235	485678.096407
1280	361815.697513	485673.786567
1281	361864.747660	485595.677788
1282	361869.048703	485588.930748
1283	361878.163404	485582.352257
1284	361884.175985	485573.950225
1285	361888.779109	485567.517782
1286	361902.838246	485546.859074
1287	361928.144694	485509.673407
1288	361931.844989	485503.911109
1289	361934.269307	485500.602568
1290	361943.553976	485487.601699
1291	361947.274399	485481.670983
1292	361961.203103	485459.419029
1293	361963.769459	485447.905940
1294	361964.854557	485442.618157
1295	361968.185470	485426.303559
1296	361970.857741	485414.818598
1297	361978.017139	485396.516897
1298	361984.332996	485378.718820

1299	361997.395588	485362.409413
1300	362003.630218	485354.607456
1301	362010.908357	485349.366554
1302	362035.551386	485337.978175
1303	362046.905521	485327.352161
1304	362050.462276	485324.634155
1305	362088.006970	485312.226796
1306	362118.634699	485293.210344
1307	362150.859933	485270.201840
1308	362167.634210	485252.128501
1309	362170.141117	485250.237982
1310	362193.167821	485232.873000
1311	362198.203380	485227.936910
1312	362224.905916	485206.247199
1313	362237.864018	485194.350958
1314	362242.284875	485190.298179
1315	362240.948673	485188.419805
1316	362264.961915	485167.935446
1317	362289.134888	485147.305078
1318	362293.857106	485143.292637
1319	362311.596083	485128.151075
1320	362315.996063	485124.592988
1321	362339.379988	485105.693321
1322	362341.238604	485106.883923
1323	362359.183065	485093.194990
1324	362372.225501	485083.214202
1325	362374.657184	485081.335960
1326	362382.554921	485073.780614
1327	362400.249377	485056.787106
1328	362407.628681	485049.740612
1329	362423.519403	485038.086806
1330	362433.762768	485028.507188
1331	362466.837754	484990.338465
1332	362506.020607	484943.246817
1333	362511.014973	484936.420583
1334	362518.687931	484924.794298
1335	362521.583800	484920.406394
1336	362529.549650	484909.244294
1337	362538.864415	484889.734700
1338	362545.532776	484875.991690
1339	362550.792389	484865.132522
1340	362561.593075	484842.513207
1341	362571.384971	484821.508596
1342	362581.219077	484800.413450
1343	362592.994682	484775.153598
1344	362594.682940	484771.532113
1345	362605.234559	484748.897838
1346	362638.803999	484680.597527
1347	362651.577326	484659.380832
1348	362663.170789	484640.123913
1349	362720.514910	484563.215541
1350	362735.818782	484553.938628
1351	362741.940331	484550.227863
1352	362762.770602	484537.600954
1353	362787.731878	484525.018910

1354	362810.670952	484513.456184
1355	362818.243074	484509.639363
1356	362900.608765	484472.913913
1357	362906.231636	484470.408841
1358	362909.171415	484469.096742
1359	362926.018258	484461.577566
1360	362947.435600	484452.051862
1361	362952.547301	484449.774523
1362	362970.812504	484441.637105
1363	363042.914865	484409.514439
1364	363051.465761	484408.096108
1365	363075.957269	484397.327778
1366	363107.670314	484383.023865
1367	363132.275260	484371.926005
1368	363152.323735	484362.883304
1369	363156.998401	484359.947396
1370	363176.808459	484347.505752
1371	363183.818172	484343.103325
1372	363192.584708	484334.268298
1373	363203.914522	484322.849967
1374	363207.559948	484317.777799
1375	363215.199147	484306.790427
1376	363224.470317	484286.896683
1377	363235.273813	484254.299001
1378	363237.056252	484247.984560
1379	363266.336753	484160.571997
1380	363274.161196	484128.208469
1381	363275.249887	484106.688590
1382	363272.377123	484082.273195
1383	363246.203577	483945.743450
1384	363223.009011	483806.303476
1385	363217.040762	483760.635033
1386	363215.011782	483728.111705
1387	363218.098323	483697.375543
1388	363220.845241	483660.634381
1389	363218.900419	483637.560454
1390	363220.980237	483625.678756
1391	363229.729659	483588.199139
1392	363230.394044	483582.782372
1393	363238.245162	483518.462213
1394	363242.200003	483470.400000
1395	363253.708447	483441.156961
1396	363252.037182	483423.181475
1397	363245.652839	483387.588802
1398	363220.731351	483308.904467
1399	363211.348664	483266.305981
1400	363211.456279	483142.790119
1401	363215.293279	483112.871194
1402	363215.427283	483109.817127
1403	363222.228545	483083.400252
1404	363227.830029	483064.147460
1405	363230.254572	483056.477015
1406	363240.344845	483024.260355
1407	363264.600953	482946.814453
1408	363317.156516	482779.013142

1409	363397.393999	482608.750636
1410	363402.134133	482598.155745
1411	363454.081252	482483.046991
1412	363603.603528	482250.908482
1413	363635.834640	482210.452582
1414	363729.651114	482125.196512
1415	363819.901306	482049.849875
1416	363838.972158	482034.405166
1417	363967.150073	481933.571716
1418	363971.572143	481929.938521
1419	363997.738841	481887.023730
1420	363986.522241	481885.638063
1421	364009.300086	481844.757378
1422	364053.222106	481777.362690
1423	364101.092665	481707.439581
1424	364143.694033	481653.226841
1425	364158.624928	481632.506638
1426	364184.410399	481594.790602
1427	364219.036773	481544.719880
1428	364250.884929	481504.564922
1429	364282.397626	481461.730452
1430	364286.576101	481456.045194
1431	364308.801871	481425.845753
1432	364313.473000	481421.174903
1433	364359.998552	481401.929517
1434	364382.341060	481387.831439
1435	364468.039454	481359.165994
1436	364510.053585	481308.272516
1437	364512.813427	481304.293545
1438	364526.374579	481283.479114
1439	364541.376980	481260.452576
1440	364543.586348	481256.694971
1441	364552.065840	481241.872973
1442	364554.286068	481236.380345
1443	364556.859431	481230.116466
1444	364560.440644	481216.142039
1445	364560.491450	481214.096291
1446	364560.896334	481209.882417
1447	364563.160650	481186.314830
1448	364565.424968	481162.747242
1449	364567.689289	481139.179653
1450	364565.826158	481102.058257
1451	364563.795299	481080.809795
1452	364559.141804	481059.837222
1453	364548.469041	481024.602225
1454	364548.082504	481023.154322
1455	364546.635713	481017.085775
1456	364540.969548	481001.485090
1457	364541.901977	480988.505114
1458	364543.936349	480973.556633
1459	364544.774310	480968.718068
1460	364544.788051	480967.479822
1461	364544.844899	480962.510567
1462	364545.797643	480956.057975
1463	364547.036767	480947.663925

1464	364547.686463	480942.879446
1465	364549.445792	480929.920982
1466	364552.358905	480913.484894
1467	364555.924473	480890.576840
1468	364558.387780	480870.084571
1469	364565.148362	480824.819929
1470	364567.218458	480819.526974
1471	364568.295607	480812.608324
1472	364566.787602	480797.931172
1473	364565.125599	480784.918176
1474	364566.663751	480765.381717
1475	364566.697854	480762.214404
1476	364559.906998	480748.464306
1477	364532.272614	480705.654755
1478	364515.021880	480679.252609
1479	364500.880640	480665.593390
1480	364491.897524	480660.880580
1481	364403.563745	480627.687371
1482	364395.018396	480622.590434
1483	364393.423488	480621.201306
1484	364388.452820	480616.849849
1485	364363.409204	480594.699752
1486	364316.137992	480554.243606
1487	364313.087831	480550.943731
1488	364314.638533	480549.759194
1489	364300.598587	480536.229049
1490	364293.100947	480525.344079
1491	364272.999905	480488.830117
1492	364272.039040	480485.263668
1493	364259.909105	480460.406444
1494	364250.084415	480443.425530
1495	364240.102758	480430.161734
1496	364220.813215	480411.316629
1497	364201.463803	480395.028417
1498	364108.806726	480317.030255
1499	364085.981496	480298.735740
1500	364083.927632	480296.984371
1501	364075.302765	480296.017731
1502	364075.345802	480291.027400
1503	364072.623302	480288.605800
1504	364028.622402	480250.426400
1505	364013.763802	480234.197200
1506	364002.556902	480211.659800
1507	363996.833102	480189.486700
1508	363995.218802	480088.375100
1509	363993.636602	479988.132700
1510	363991.057402	479811.241500
1511	363994.000602	479761.528600
1512	363995.600802	479746.362000
1513	363998.343402	479720.523400
1514	363999.300002	479715.951800
1515	364000.141402	479711.002000
1516	364000.823402	479707.533800
1517	364004.424402	479690.300300
1518	364009.122602	479665.644300

1519	364012.678602	479652.400000
1520	364015.928702	479632.192400
1521	364024.306402	479620.640900
1522	364028.044602	479608.283800
1523	364035.515002	479591.106900
1524	364041.950402	479573.544400
1525	364052.608402	479545.397400
1526	364062.710802	479515.388800
1527	364075.403002	479476.727500
1528	364080.551302	479461.512000
1529	364088.464102	479446.698100
1530	364092.067402	479438.331400
1531	364101.870802	479413.455100
1532	364107.829502	479404.815900
1533	364111.275402	479400.260000
1534	364118.668102	479383.973900
1535	364126.325302	479368.743700
1536	364130.190902	479357.644400
1537	364136.694102	479321.077700
1538	364142.563002	479302.293500
1539	364146.976002	479270.004200
1540	364176.429102	479064.371400
1541	364178.411502	479050.818900
1542	364190.066602	478970.287000
1543	364206.211402	478856.505000
1544	364209.931802	478830.522900
1545	364210.907702	478823.731900
1546	364211.979502	478815.909900
1547	364226.340002	478717.470000
1548	364227.741502	478532.973700
1549	364227.241501	478532.960600
1550	364227.489802	478463.242100
1551	364228.652602	478259.728800
1552	364228.143502	478252.528400
1553	364188.282902	478138.339000
1554	364184.494302	478127.465100
1555	364116.601102	478024.688200
1556	364096.133902	477972.149200
1557	364079.903702	477933.287000
1558	364063.381402	477894.258800
1559	364031.208202	477817.779800
1560	363999.402402	477742.575300
1561	363970.267502	477673.301800
1562	363895.338802	477495.978400
1563	363870.730202	477441.777100
1564	363810.077602	477300.064100
1565	363786.806602	477245.724400
1566	363758.866902	477180.483000
1567	363726.371902	477104.588200
1568	363719.139002	477102.018800
1569	363701.031602	477133.647200
1570	363687.873802	477156.670500
1571	363676.908802	477175.604900
1572	363669.865602	477194.765200
1573	363667.456902	477201.326100

1574	363601.530102	477206.383400
1575	363576.615402	477208.296300
1576	363557.433502	477206.941300
1577	363539.482402	477205.669300
1578	363522.532002	477204.473400
1579	363512.756202	477214.684600
1580	363499.655902	477209.966900
1581	363492.304602	477169.072900
1582	363462.640102	477170.881300
1583	363452.388202	477087.812300
1584	363456.864702	477073.165800
1585	363477.374302	477031.607800
1586	363490.918202	477022.814100
1587	363492.524102	477012.405700
1588	363476.465202	477000.471400
1589	363471.665002	476990.901000
1590	363467.744402	476983.507700
1591	363465.932502	476959.391300
1592	363464.741302	476941.863900
1593	363462.084302	476905.033700
1594	363457.365102	476841.871300
1595	363455.589002	476818.903900
1596	363453.224902	476797.514200
1597	363450.898202	476787.539800
1598	363438.270702	476756.934800
1599	363592.712001	476739.991300
1600	363677.419002	476778.949300
1601	363703.769102	476727.424400
1602	363733.535102	476669.164700
1603	363747.182102	476642.466100
1604	363763.106902	476611.317600
1605	363818.680602	476626.076000
1606	363841.588002	476589.493200
1607	363867.201602	476551.253700
1608	363869.513302	476547.813000
1609	363937.148402	476446.226700
1610	363958.421202	476413.615000
1611	363971.656602	476393.319800
1612	363976.463202	476385.946100
1613	364037.514502	476293.337400
1614	364108.224202	476186.360700
1615	364167.829802	476096.201100
1616	364221.437002	476016.160600
1617	364223.609202	476012.751800
1618	364250.895402	475971.840200
1619	364307.054002	475886.886300
1620	364364.464002	475799.166200
1621	364368.174402	475793.487000
1622	364403.616602	475738.718000
1623	364477.466602	475624.590600
1624	364513.143602	475569.448500
1625	364520.083602	475560.925900
1626	364541.068502	475534.985800
1627	364555.424202	475519.093600
1628	364564.599202	475509.540500

1629	364588.425402	475487.400000
1630	364617.966202	475463.561200
1631	364629.529102	475454.645000
1632	364659.440102	475437.358800
1633	364703.094602	475423.591900
1634	364743.519602	475414.847700
1635	364851.030902	475390.174300
1636	364941.376902	475374.104500
1637	365054.784202	475353.648300
1638	365178.378302	475294.785500
1639	365281.995502	475234.178800
1640	365310.474002	475214.503200
1641	365323.257702	475197.693000
1642	365334.136602	475183.388200
1643	365408.324002	475068.356700
1644	365412.503402	475061.891500
1645	365461.322002	474986.175700
1646	365470.972102	474971.198000
1647	365490.956202	474940.103700
1648	365503.590402	474920.426600
1649	365494.387902	474924.362000
1650	365502.082402	474903.123600
1651	365513.146502	474848.580700
1652	365514.334702	474833.249800
1653	365524.497602	474701.707100
1654	365525.350902	474680.203000
1655	365525.254002	474649.235500
1656	365524.764302	474619.502900
1657	365523.031402	474600.383700
1658	365521.545402	474583.950100
1659	365520.651302	474574.205900
1660	365518.292802	474548.137800
1661	365516.371502	474526.951900
1662	365515.657302	474512.846900
1663	365513.476602	474493.154000
1664	365511.828002	474482.330600
1665	365511.124802	474472.653800
1666	365508.689802	474454.813800
1667	365506.065302	474437.006400
1668	365503.580002	474419.147100
1669	365501.971202	474406.863700
1670	365498.815802	474396.231000
1671	365494.520102	474386.273800
1672	365492.775102	474382.239300
1673	365486.538202	474368.520200
1674	365476.385902	474346.328100
1675	365465.566902	474327.254100
1676	365454.171702	474309.167700
1677	365453.272002	474307.720600
1678	365437.950102	474283.240600
1679	365436.196602	474280.765700
1680	365429.208802	474271.315400
1681	365422.302602	474261.974000
1682	365411.504502	474248.777600
1683	365400.655602	474235.511900

1684	365389.796302	474222.226400
1685	365380.559802	474210.627900
1686	365373.951802	474202.621800
1687	365368.468202	474194.240400
1688	365363.724102	474188.018100
1689	365355.935902	474177.789100
1690	365351.320502	474172.194700
1691	365344.358302	474162.424200
1692	365321.953002	474130.984400
1693	365308.228302	474108.521600
1694	365304.772902	474102.241500
1695	365297.138502	474088.661700
1696	365285.734402	474060.499000
1697	365277.072302	474039.086100
1698	365270.218202	474017.568300
1699	365260.283602	473985.786600
1700	365255.929402	473971.581800
1701	365246.728302	473936.441200
1702	365244.457302	473926.876000
1703	365242.260802	473917.639600
1704	365237.772502	473886.452600
1705	365234.342102	473866.747000
1706	365231.257002	473847.436500
1707	365229.882002	473823.823900
1708	365229.856202	473783.498700
1709	365229.851302	473778.790500
1710	365228.249902	473738.017200
1711	365218.007102	473678.789700
1712	365202.603802	473628.090200
1713	365199.713602	473618.563500
1714	365183.551202	473584.598500
1715	365178.825902	473574.657200
1716	365175.928602	473551.565400
1717	365143.841902	473487.850500
1718	365083.673202	473355.057600
1719	365083.339802	473346.825100
1720	365050.338902	473328.486600
1721	365047.333802	473324.409400
1722	365019.636302	473286.144900
1723	365005.977202	473251.025800
1724	365003.112802	473236.850400
1725	365004.248102	473188.652000
1726	365004.815302	473164.522900
1727	365008.789902	473165.687700
1728	365008.221202	473189.706900
1729	365010.677102	473186.574200
1730	365080.081902	473126.329200
1731	365110.089102	473084.100700
1732	365129.572302	473043.486800
1733	365130.908302	472940.205500
1734	365114.011702	472913.168100
1735	365098.067502	472924.053900
1736	365077.986402	472935.786500
1737	365054.740802	472946.383000
1738	365034.981102	472952.423200

1739	365005.071903	472958.953100
1740	364985.519803	472959.022600
1741	364961.997003	472957.477300
1742	364937.427003	472951.758000
1743	364915.953003	472945.106400
1744	364889.691703	472934.172200
1745	364880.496003	472924.812300
1746	364859.208703	472915.019200
1747	364839.508303	472910.852300
1748	364801.783303	472894.997900
1749	364748.776203	472885.122000
1750	364717.892903	472882.628600
1751	364712.909003	472882.937100
1752	364705.427703	472883.380100
1753	364543.631003	472893.196600
1754	364491.272203	472899.176000
1755	364464.516703	472903.163400
1756	364434.860603	472910.659400
1757	364397.734103	472921.557200
1758	364353.618903	472941.798000
1759	364281.999303	472992.936800
1760	364203.826703	473048.764300
1761	364110.799303	473117.641900
1762	364089.953403	473129.005100
1763	364071.953203	473135.051100
1764	364050.314603	473138.947900
1765	364022.720503	473137.938600
1766	363997.538803	473130.628300
1767	363981.121803	473121.717800
1768	363970.758003	473116.092600
1769	363948.610103	473096.085000
1770	363829.295603	472959.888100
1771	363774.589103	472894.155600
1772	363774.713503	472862.555200
1773	363767.403003	472862.326000
1774	363764.625103	472884.896200
1775	363652.448603	472753.829000
1776	363626.003503	472724.474000
1777	363616.249903	472731.216000
1778	363575.193303	472706.460700
1779	363515.276603	472670.319400
1780	363482.151503	472691.588300
1781	363440.211203	472703.542100
1782	363419.129703	472712.319500
1783	363402.208803	472708.913900
1784	363386.919303	472719.440900
1785	363359.337103	472665.600200
1786	363345.520303	472638.630300
1787	363335.643403	472618.283600
1788	363334.470403	472615.860700
1789	363306.822703	472558.712000
1790	363315.883001	472516.162300
1791	363332.423101	472473.059700
1792	363361.225901	472434.826400
1793	363374.994100	472413.284300

1794	363386.911400	472393.077300
1795	363393.663700	472377.459800
1796	363348.235700	472361.191600
1797	363313.400100	472349.725800
1798	363294.320400	472343.451000
1799	363276.151900	472337.283600
1800	363263.090100	472333.914800
1801	363280.403300	472369.423500
1802	363282.933700	472374.596800
1803	363281.847500	472389.356500
1804	363274.906700	472405.806300
1805	363267.051301	472427.706800
1806	363251.010601	472449.010300
1807	363243.341601	472469.198800
1808	363223.131201	472488.240600
1809	363210.165401	472504.173600
1810	363191.684401	472518.133300
1811	363188.229301	472521.299800
1812	363174.828401	472544.836100
1813	363176.744501	472572.899700
1814	363176.708401	472608.737500
1815	363157.650103	472629.412800
1816	363144.894803	472647.562100
1817	363137.157903	472662.823300
1818	363133.059803	472672.286400
1819	363128.721003	472683.872100
1820	363125.630403	472688.103200
1821	363118.625103	472697.696400
1822	363112.194403	472717.068100
1823	363110.648803	472721.697700
1824	363110.884103	472727.172600
1825	363108.793603	472739.417000
1826	363107.385803	472748.973000
1827	363105.557103	472761.353800
1828	363080.272603	472774.887500
1829	363071.545903	472783.604700
1830	363062.645703	472797.872200
1831	363056.278903	472808.096400
1832	362973.736903	472810.903000
1833	362948.281358	472810.661621
1834	362948.276803	472816.771800

89	361843.746102	475399.191900
90	361832.048702	475453.484000
91	361821.836202	475499.458500
92	361814.796702	475531.954100
93	361812.417102	475548.601000
94	361810.289302	475566.114200
95	361812.176502	475587.720500
96	361816.726402	475619.746500
97	361819.297802	475631.516800
98	361819.926902	475634.367200
99	361820.759202	475638.184300
100	361820.942002	475642.020500
101	361821.278702	475649.763100
102	361820.927102	475669.950800
103	361819.023002	475680.483300
104	361815.756102	475694.403400
105	361808.529402	475718.394600
106	361801.562102	475743.071900
107	361797.358202	475758.634400
108	361785.002902	475804.358600
109	361766.711602	475865.439200
110	361747.556802	475934.958700
111	361737.273002	475970.677900
112	361734.725802	475979.519900
113	361731.463002	475990.840900
114	361715.263402	476048.473900
115	361714.634902	476050.741700
116	361705.067202	476084.751600
117	361691.479302	476078.031300
118	361667.762402	476080.547500
119	361618.678602	476102.226600
120	361597.128302	476106.002400
121	361596.334002	476107.842700
122	361580.260502	476115.881500
123	361556.087502	476121.572700
124	361476.314602	476119.323400
125	361459.096702	476120.480400
126	361449.622102	476124.259700
127	361442.225502	476143.175100
128	361407.890102	476140.449400
129	361311.690402	476119.153300
130	361299.322002	476125.481700
131	361275.396302	476143.315300
132	361213.059302	476189.808400
133	361203.503202	476240.612200
134	361191.794502	476251.289900
135	361177.457002	476264.153100
136	361105.500002	476274.141700
137	361053.419001	476298.841100
138	361041.416401	476303.425000
139	361036.354802	476305.354100
140	361018.742802	476308.385900
141	360980.920401	476310.876500
142	360977.075302	476311.129400
143	360955.971902	476312.519900

144	360920.812902	476308.796000
145	360903.758502	476249.292100
146	360893.868202	476234.513700
147	360884.141402	476228.699800
148	360870.522202	476224.059300
149	360824.006602	476216.663200
150	360808.408002	476214.189200
151	360753.711702	476193.480600
152	360705.076502	476019.972200
153	360690.045002	476029.636100
154	360652.471502	476053.805600
155	360640.615402	476064.665300
156	360583.393702	476106.599500
157	360520.560402	476152.629700
158	360510.495202	476159.246200
159	360502.015002	476164.821100
160	360460.148902	476192.318700
161	360431.500602	476208.398100
162	360424.120202	476212.528400
163	360409.836202	476223.481500
164	360376.697302	476266.233400
165	360352.824502	476286.455500
166	360326.316402	476306.224000
167	360321.472802	476308.739900
168	360280.945202	476330.361200
169	360194.532202	476422.230400
170	360088.773502	476425.437600
171	360066.465402	476399.624200
172	360006.857302	476372.865500
173	359974.990002	476362.818400
174	360004.291302	476249.794000
175	360008.020602	476155.555600
176	360043.818802	476101.940800
177	360030.368602	476103.035900
178	360025.316102	476103.445400
179	360034.293802	476094.804600
180	360040.863502	476091.325300
181	360097.433402	476065.924200
182	360116.985602	476057.147700
183	360202.335702	476018.714400
184	360333.736302	475959.003600
185	360328.197702	475933.578900
186	360320.413102	475898.228600
187	360394.365002	475786.378300
188	360399.936402	475777.924400
189	360406.795202	475756.247500
190	360417.697802	475695.788400
191	360424.713002	475662.983200
192	360434.486502	475637.377400
193	360439.856502	475627.356900
194	360447.036502	475615.931900
195	360479.094102	475557.830400
196	360499.960302	475513.838100
197	360511.119102	475476.317500
198	360345.887841	475336.255767

199	360189.922102	475205.061000
200	360080.073302	475330.011600
201	359967.471602	475459.038800
202	359857.064002	475585.516600
203	359740.351402	475718.719200
204	359729.741102	475727.132500
205	359716.827702	475733.088500
206	359670.266702	475748.515000
207	359621.924402	475764.525900
208	359585.914802	475778.147600
209	359565.219502	475791.018500
210	359561.169502	475794.543100
211	359556.202002	475796.051000
212	359547.518002	475807.146900
213	359534.745302	475813.150900
214	359453.938002	475856.270000
215	359428.080902	475885.556200
216	359419.809002	475891.738100
217	359407.330302	475895.868700
218	359216.527502	475936.525200
219	359172.854402	475944.624600
220	358808.221702	476022.964700
221	358708.700102	476043.539800
222	358698.729502	476046.146300
223	358526.074502	476084.943400
224	358461.411502	476095.421300
225	358460.534402	476106.489500
226	358442.977602	476120.056900
227	358441.250602	476123.129600
228	358427.738802	476146.597800
229	358398.604402	476205.738900
230	358382.524102	476229.242500
231	358344.775102	476291.461300
232	358232.495302	476281.393000
233	358191.639202	476277.747600
234	358176.730202	476276.713500
235	358172.051602	476307.157400
236	358170.731102	476317.242100
237	358168.696702	476332.105000
238	358166.662302	476346.967900
239	358162.667502	476376.252800
240	358157.181702	476416.304500
241	358142.236302	476508.368600
242	358140.199702	476526.690400
243	358139.189202	476537.510500
244	358131.359402	476596.068200
245	358035.365802	477304.086000
246	358023.664802	477992.588400
247	358014.048602	477994.800200
248	357811.572902	478038.597400
249	357763.715002	477888.899300
250	357737.461702	477801.711600
251	357721.087202	477747.316300
252	357694.477902	477662.582600
253	357625.173602	477448.062700

254	357499.874803	477590.031400
255	357362.858903	477743.517800
256	357228.717603	477885.088800
257	357223.111203	477891.004000
258	357269.978003	477931.103800
259	357125.247603	478052.168000
260	356984.963703	478169.462200
261	356916.033503	478227.172900
262	356795.869103	478247.773000
263	356785.052003	478256.419200
264	356778.003803	478242.591200
265	356775.273703	478243.968400
266	356776.775103	478262.961100
267	356761.502303	478285.574000
268	356708.695803	478364.265100
269	356619.101603	478498.034700
270	356611.497903	478509.175700
271	356531.501203	478626.328600
272	356529.922403	478660.448600
273	356373.910503	478715.871300
274	356267.223603	478754.759400
275	356252.032403	478764.445600
276	356115.922003	478906.024200
277	356108.377303	478914.195400
278	356002.900003	479028.491000
279	355946.961603	479089.561500
280	355898.517903	479142.461600
281	355878.498603	479172.467400
282	355873.859803	479181.858100
283	355875.844203	479190.927600
284	355929.539103	479299.919600
285	355946.045503	479333.420400
286	355931.354903	479402.609200
287	355841.171603	479462.472600
288	355825.397903	479473.406400
289	355729.043603	479541.022300
290	355687.145603	479678.593000
291	355691.436103	479686.711100
292	355717.670403	479742.040200
293	355769.280303	479817.992200
294	355754.313003	479817.089000
295	355709.117503	479803.966900
296	355656.956403	479787.362100
297	355633.864003	479780.812900
298	355579.048103	479765.254400
299	355577.301903	479764.758700
300	355497.589703	479756.091200
301	355478.006903	479753.952100
302	355467.525903	479755.066200
303	355436.891103	479758.307700
304	355398.130803	479762.401000
305	355368.184703	479765.563000
306	355356.905203	479772.566200
307	355337.289903	479784.742600
308	355327.344503	479787.728700

309	355286.815703	479799.863600
310	355254.739101	479809.462800
311	355248.692701	479805.947400
312	355211.262501	479854.297200
313	355195.481601	479874.867800
314	355168.373301	479910.559600
315	355140.483201	479947.561600
316	355125.323201	479968.203700
317	355124.536301	479989.437300
318	355124.376401	480002.485000
319	355131.682401	480045.149600
320	355138.365201	480066.540100
321	355143.078201	480072.673000
322	355148.240801	480070.092700
323	355173.991701	480104.865500
324	355188.985901	480125.111800
325	355214.390603	480159.429600
326	355281.029401	480240.012700
327	355322.959003	480289.597300
328	355398.036403	480380.430500
329	355412.916703	480398.219100
330	355468.016203	480464.066400
331	355521.875903	480527.001800
332	355557.427703	480586.730900
333	355599.263803	480662.147800
334	355614.338303	480697.647700
335	355625.425703	480710.780200
336	355638.617803	480729.381900
337	355673.724803	480789.476900
338	355718.327803	480837.195200
339	355746.735403	480876.869700
340	355748.838103	480880.739300
341	355838.686903	481040.904700
342	355851.223203	481067.042800
343	355903.106503	481165.703100
344	355915.180403	481174.983400
345	355914.239303	481187.921900
346	355913.390203	481190.142800
347	355921.236703	481206.758900
348	355932.285503	481230.138400
349	355954.772801	481276.892100
350	355968.976901	481304.356700
351	355972.508601	481302.398600
352	355977.854901	481311.681700
353	355991.974503	481335.198800
354	355999.048903	481348.016800
355	356053.909403	481442.197500
356	356055.087003	481444.950300
357	356064.524403	481460.944600
358	356065.639903	481462.818600
359	356073.981703	481476.928600
360	356094.247103	481511.167200
361	356114.451503	481545.326700
362	356138.780603	481586.456900
363	356162.451703	481624.817100

364	356166.056203	481630.305500
365	356166.779103	481631.984900
366	356167.569703	481636.392500
367	356168.322803	481641.710300
368	356168.478603	481646.486500
369	356171.098703	481655.977100
370	356182.022603	481691.324200
371	356190.113703	481704.648000
372	356205.279603	481721.403000
373	356209.224303	481726.186900
374	356221.605003	481741.041000
375	356230.132103	481749.740300
376	356239.537803	481760.536800
377	356245.658203	481767.240100
378	356251.862003	481773.472300
379	356263.566203	481784.936900
380	356276.058803	481797.760100
381	356286.246503	481807.996000
382	356313.291903	481835.153500
383	356338.956503	481863.669600
384	356365.930903	481893.647100
385	356384.261603	481917.346000
386	356414.304003	481961.756200
387	356417.841903	481966.765600
388	356456.214203	482088.924100
389	356468.130903	482102.025200
390	356475.351903	482105.904200
391	356487.153103	482114.258500
392	356562.549403	482171.678400
393	356564.510603	482173.260800
394	356651.836603	482238.933200
395	356663.840603	482247.494600
396	356670.857203	482252.496000
397	356667.866703	482270.501100
398	356666.881401	482306.332300
399	356659.512201	482323.598100
400	356647.221101	482339.882000
401	356625.892101	482358.260000
402	356616.684701	482366.194300
403	356576.040601	482408.360600
404	356534.931201	482440.716700
405	356492.078801	482481.504000
406	356471.547201	482503.339800
407	356447.508201	482528.902700
408	356434.330001	482546.818300
409	356405.447301	482598.079200
410	356340.478101	482651.597300
411	356330.499703	482639.869000
412	356301.783703	482606.106900
413	356224.403803	482698.392900
414	356188.891703	482761.851100
415	356018.243603	482946.872300
416	356013.529103	482951.505800
417	355938.609401	482986.617600
418	355918.148101	482998.335900

419	355938.875301	483026.180300
420	355935.099201	483026.372300
421	355925.476606	483026.865606
422	355929.130112	483031.273689
423	355971.674593	483094.523710
424	355983.861257	483116.903735
425	355993.364923	483139.496934
426	356059.058142	483284.692333
427	356078.172125	483326.260945
428	356090.732087	483345.336913
429	356099.361983	483354.134003
430	356102.434868	483357.252421
431	356107.151570	483361.166756
432	356112.227373	483364.579328
433	356114.723709	483365.959254
434	356137.435486	483379.877516
435	356142.004062	483384.357676
436	356149.464970	483388.992758
437	356057.846176	483399.468155
438	356020.319050	483431.472060
439	355999.437933	483450.533270
440	355979.863608	483468.887793
441	355946.685354	483498.314733
442	355935.694988	483507.973778
443	355913.956941	483527.948797
444	355889.170737	483542.703915
445	355861.262347	483570.632163
446	355832.989501	483601.009413
447	355811.736912	483622.298254
448	355792.841007	483641.074095
449	355773.745102	483660.521071
450	355733.846557	483701.463961
451	355709.680072	483728.607228
452	355679.395885	483744.646676
453	355663.928890	483752.898402
454	355656.302516	483756.910037
455	355626.708149	483794.419921
456	355619.059545	483804.636316
457	355594.364290	483836.006389
458	355569.342458	483867.169352
459	355566.111244	483864.982148
460	355558.206652	483859.631544
461	355529.093430	483903.145989
462	355524.613242	483909.842361
463	355495.948034	483881.868675
464	355488.892391	483865.422390
465	355487.351391	483867.019472
466	355462.942580	483917.016484
467	355456.205176	483919.278742
468	355276.670232	483961.601441
469	355262.645629	483950.979109
470	355115.193897	483839.335640
471	355061.595726	483798.696316
472	355034.697572	483778.404806
473	354986.485155	483753.776252

474	354992.028147	483692.568961
475	354873.208973	483635.911998
476	354881.150219	483618.302845
477	354870.686886	483615.549730
478	354892.942015	483569.724699
479	354905.990861	483542.509610
480	354915.163067	483525.701365
481	354921.878602	483513.373000
482	354930.937195	483495.208090
483	354962.153962	483432.621826
484	354967.728949	483424.020941
485	355045.456435	483307.889820
486	355051.555855	483293.687520
487	355066.738681	483256.734741
488	355077.814545	483230.362994
489	355093.358867	483193.315201
490	355100.626862	483175.678080
491	355114.248336	483135.424202
492	355117.641555	483124.200540
493	355124.881435	483078.748339
494	355125.990311	483070.104106
495	355119.393002	483068.308983
496	355121.859070	483056.090601
497	355090.998026	483040.876273
498	355072.587566	483034.188450
499	355041.598966	483022.036264
500	355037.048390	483020.251751
501	355006.048279	483008.195473
502	354968.662910	482992.614689
503	354881.736328	482966.768977
504	354859.659880	482960.154102
505	354854.189140	482958.384711
506	354818.939729	482946.476242
507	354748.241804	482917.934493
508	354737.924479	482912.968207
509	354711.625980	482900.155169
510	354678.418742	482884.324993
511	354645.708239	482863.503212
512	354576.502480	482824.614708
513	354546.694771	482807.865057
514	354503.176917	482783.411422
515	354482.682899	482771.895411
516	354478.754467	482771.266789
517	354455.221284	482767.501051
518	354435.912562	482764.104836
519	354421.045683	482762.133840
520	354400.519470	482759.412554
521	354395.694123	482758.108566
522	354389.151831	482756.340596
523	354371.567377	482751.588631
524	354322.097854	482738.220173
525	354284.365977	482733.481061
526	354241.663071	482730.474393
527	354237.913991	482730.469408
528	354131.248861	482726.466908

529	354105.917175	482725.642495
530	354073.673873	482727.704962
531	354069.877178	482727.836834
532	354010.640707	482731.715282
533	353956.543593	482735.219376
534	353905.234409	482735.426925
535	353841.431832	482738.863464
536	353810.248844	482736.730894
537	353777.228719	482726.160237
538	353692.999805	482685.243895
539	353629.193157	482654.271652
540	353585.110531	482627.710148
541	353563.536788	482615.365686
542	353447.888719	482564.116448
543	353396.317881	482551.435687
544	353345.777734	482538.739374
545	353317.013263	482533.498843
546	353130.682209	482517.273680
547	353132.630707	482515.930793
548	353059.093857	482510.766154
549	353036.662055	482515.248862
550	353026.855682	482517.444968
551	352730.111324	482657.827948
552	352430.299417	482799.662506
553	352082.208839	482964.337293
554	351748.874386	483122.032204
555	351200.762851	483381.337819
556	351217.076353	483399.472767
557	351257.367540	483430.657291
558	351301.631297	483475.130305
559	351379.396628	483555.841806
560	351415.606130	483574.094736
561	351453.873649	483585.126495
562	351478.613739	483592.462618
563	351501.105547	483599.132066
564	351529.206613	483607.305638
565	351545.800768	483620.036368
566	351564.610712	483634.473812
567	351574.417242	483641.987222
568	351583.043359	483648.632136
569	351599.166950	483661.052540
570	351619.605047	483676.529332
571	351643.863682	483686.196254
572	351663.313116	483693.946739
573	351683.203761	483710.914759
574	351703.094409	483727.882779
575	351720.101502	483742.365230
576	351735.146175	483755.192505
577	351875.028366	483823.794643
578	351885.813168	483823.993564
579	352018.832525	483826.654262
580	352082.124653	483839.204847
581	352119.133021	483850.166972
582	352212.520047	483867.717370
583	352292.889916	483863.026326

584	352476.403406	483816.823916
585	352624.007267	483780.576805
586	352631.792470	483819.172909
587	352649.709927	483908.000795
588	352659.043830	483954.274641
589	352670.872632	484012.917151
590	352678.912960	484052.777874
591	352694.231352	484123.749584
592	352704.773619	484170.462992
593	352714.820365	484221.699077
594	352616.266342	484256.398575
595	352582.243547	484268.997739
596	352572.262546	484271.031997
597	352559.300103	484363.098244
598	352556.761543	484374.002979
599	352496.475061	484409.027861
600	352416.209676	484454.899365
601	352372.145195	484485.311331
602	352363.260778	484491.033559
603	352437.744289	484523.384708
604	352488.271548	484545.644601
605	352515.375224	484557.286007
606	352541.603734	484568.901814
607	352566.357697	484579.719220
608	352591.694245	484590.786409
609	352611.182543	484599.437018
610	352630.768078	484608.003956
611	352649.736163	484616.013464
612	352670.006257	484624.894034
613	352687.896519	484632.790479
614	352476.364920	484724.155555
615	352502.734927	484749.292416
616	352538.427286	484760.902589
617	352671.569276	484850.874503
618	352691.447093	484873.492783
619	352683.191230	484876.931061
620	352719.914840	484927.475672
621	352761.835443	484990.909757
622	352797.826472	485045.371365
623	352868.789004	485161.511294
624	352858.520068	485214.020713
625	352924.579650	485378.400901
626	352998.750728	485548.835533
627	353064.656199	485669.494463
628	353090.176841	485746.295781
629	353105.950685	485794.520615
630	353108.752245	485803.085624
631	353134.192061	485856.572946
632	353165.721379	485933.017553
633	353179.648748	485965.861320
634	353195.921773	486004.815443
635	353218.734034	486034.655649
636	353227.712969	486067.431207
637	353288.903111	486221.416544
638	353294.727937	486233.813092

639	353308.758158	486264.643180
640	353365.535616	486381.178565
641	353396.493674	486457.433609
642	353403.132403	486489.142226
643	353397.865343	486509.725820
644	353386.949439	486582.557217
645	353382.066251	486616.752527
646	353379.527699	486634.568475
647	353376.988827	486652.374431
648	353374.360903	486670.833409
649	353369.472954	486704.568760
650	353364.765465	486738.628400
651	353359.681080	486773.410322
652	353357.620902	486789.463941
653	353355.613652	486807.100055
654	353353.250041	486819.479576
655	353368.432408	486818.476233
656	353508.884912	486803.711112
657	353592.497069	486779.549682
658	353595.554852	486783.333326
659	353623.444133	486818.685045
660	353634.538211	486832.747605
661	353664.900119	486870.031818
662	353672.694790	486879.252015
663	353686.434433	486895.785973
664	353724.834392	486878.318204
665	353734.742110	486873.770509
666	353766.092990	486922.948783
667	353800.848918	486886.679868
668	353855.259689	486844.448128
669	353908.512793	486824.070713
670	353976.845960	486798.660227
671	353994.634783	486786.371499
672	353995.787763	486785.575008
673	354033.282729	486788.031336
674	354095.508408	486792.107796
675	354108.360734	486710.315659
676	354159.830194	486710.272653
677	354187.476108	486687.831287
678	354241.721036	486643.798383
679	354266.393821	486629.161538
680	354322.662420	486599.178533
681	354359.572148	486579.511005
682	354440.719843	486481.919218
683	354455.562789	486538.001271
684	354459.189541	486551.704597
685	354489.031432	486654.452837
686	354524.994971	486776.484139
687	354533.712938	486806.796431
688	354560.616986	486900.341311
689	354563.264907	486909.805212
690	354594.449920	487014.376935
691	354627.896965	487128.742654
692	354642.692374	487180.110796
693	354654.571290	487220.922342

694	354655.218451	487222.704614
695	354628.274434	487353.252039
696	354589.318447	487522.908314
697	354586.528865	487535.854755
698	354585.560407	487540.349368
699	354551.895986	487696.586055
700	354536.939546	487759.963169
701	354514.717547	487859.789949
702	354488.741029	487977.930733
703	354462.893791	488095.420205
704	354462.165694	488098.795157
705	354460.219985	488107.545261
706	354452.003036	488146.004385
707	354433.896494	488230.751468
708	354445.723866	488242.838180
709	354536.489364	488322.895731
710	354545.076092	488330.469407
711	354555.230172	488339.425614
712	354608.019274	488385.986977
713	354620.075613	488396.620935
714	354641.730231	488415.720916
715	354906.056420	488648.591943
716	354889.145556	488700.635930
717	354868.608548	488764.873854
718	354866.708046	488791.101627
719	354870.003332	488810.785069
720	354872.417604	488824.921004
721	354877.127265	488840.672149
722	354883.884121	488841.847359
723	355215.989686	488900.408573
724	355341.239354	488922.494199
725	355351.543461	488911.672011
726	355461.407206	489010.827650
727	355477.424171	489037.348507
728	355500.574540	489070.875910
729	355519.890182	489098.849695
730	355538.069606	489125.177964
731	355557.271618	489152.987198
732	355608.514843	489227.200008
733	355612.491589	489232.959317
734	355618.740761	489242.009660
735	355631.251567	489244.578783
736	355643.732937	489247.141860
737	355656.224119	489249.706951
738	355739.212997	489273.557924
739	355839.708003	489372.542776
740	355842.484244	489375.532077
741	355849.768864	489382.553556
742	355865.517599	489396.453755
743	355922.467422	489443.214171
744	355864.427332	489510.138060
745	355818.917559	489608.969002
746	355806.101887	489668.864092
747	355807.439353	489676.457237
748	355870.854724	489785.174536

749	355882.568307	489800.141840
750	356008.938076	489964.132354
751	356048.092912	489944.718400
752	356054.352745	489942.796815
753	356075.670222	489959.365846
754	356114.245267	489989.113538
755	356116.252807	489990.889460
756	356117.671169	490004.837198
757	356124.154800	490034.475908
758	356125.923656	490042.520980
759	356135.208612	490084.942686
760	356145.254809	490130.820723
761	356123.071259	490121.541274
762	356113.603630	490120.609433
763	356107.894268	490199.887304
764	356123.726127	490201.068915
765	356120.915558	490223.174394
766	356117.338306	490249.435472
767	356117.189912	490250.420470
768	356128.932827	490256.024492
769	356125.668336	490268.672333
770	356107.805657	490292.071704
771	356091.083838	490311.753549
772	356086.376807	490317.796190
773	356072.678558	490328.538805
774	356063.526836	490335.714513
775	356053.659782	490343.663383
776	356041.221020	490353.135234
777	356012.216966	490367.860540
778	355958.135366	490395.304524
779	355830.252500	490424.655008
780	355767.666141	490429.817806
781	355743.717957	490430.202906
782	355684.682131	490438.450946
783	355659.252010	490440.248442
784	355582.623150	490444.892672
785	355584.146890	490438.971628
786	355563.821810	490434.996271
787	355456.023598	490445.612962
788	355439.696357	490461.285220
789	355361.310301	490457.491974
790	355339.505145	490472.919416
791	355311.966859	490467.071760
792	355248.845619	490502.694503
793	355220.331650	490531.047357
794	355181.931408	490555.292803
795	355165.811305	490605.658743
796	355174.168090	490675.815790
797	355224.595147	490811.256146
798	355268.318945	490945.750277
799	355269.724789	490963.492555
800	355279.422324	490985.581107
801	355285.853213	491050.344217
802	355292.692572	491131.328932
803	355290.988458	491209.173590

804	355283.632399	491223.592268
805	355266.219949	491285.511272
806	355246.507687	491336.220483
807	355204.786154	491426.137471
808	355175.874371	491473.055900
809	355124.447631	491533.048602
810	355086.825309	491557.140251
811	355039.541788	491582.318045
812	355006.843327	491592.254486
813	354949.060831	491639.135692
814	354924.000020	491655.842555
815	354902.010879	491684.784415
816	354884.546670	491731.576194
817	354905.946953	491806.130025
818	354924.667890	491821.469097
819	354965.461812	491920.182521
820	355000.074024	491983.452144
821	355015.382851	491998.395072
822	355051.922186	492046.450510
823	355058.421620	492073.879414
824	355081.509548	492108.577373
825	355106.087732	492134.765034
826	355170.980162	492227.102061
827	355179.868479	492246.821697
828	355208.711386	492286.706225
829	355252.903159	492342.064107
830	355281.544691	492381.845995
831	355312.599979	492422.234375
832	355341.440440	492457.563380
833	355382.819167	492523.111277
834	355446.150279	492631.925817
835	355467.068058	492694.866250
836	355506.184704	492814.536179
837	355526.614884	492881.901047
838	355534.825462	492960.995540
839	355542.661974	493035.996350
840	355545.932562	493076.939075
841	355554.555470	493132.369717
842	355562.512319	493227.892265
843	355567.700660	493298.093220
844	355584.981468	493379.633459
845	355605.634115	493444.450715
846	355617.848568	493489.992592
847	355629.843361	493528.700221
848	355653.930607	493578.747122
849	355679.178966	493664.917850
850	355684.714672	493692.640972
851	355681.341318	493694.739865
852	355672.869087	493700.023353
853	355671.441969	493707.280916
854	355688.172301	493736.730205
855	355688.334419	493747.997638
856	355691.882481	493821.350823
857	355686.939532	493920.562919
858	355651.259831	493932.972398

859	355628.901500	493939.102324
860	355635.992293	493941.875110
861	355640.369601	493948.916096
862	355641.095241	493953.753912
863	355655.388314	493970.858611
864	355652.913856	493979.140070
865	355650.849072	493984.607704
866	355634.997216	493998.670405
867	355624.284413	494004.886122
868	355600.240953	494008.379587
869	355600.449613	494015.804623
870	355599.460152	494020.807594
871	355601.770997	494025.484430
872	355579.926478	494048.221748
873	355567.520512	494071.154916
874	355498.770958	494107.153563
875	355433.160058	494152.422656
876	355419.371478	494162.838212
877	355404.543652	494176.707978
878	355377.101231	494191.773409
879	355359.780152	494186.578819
880	355357.745776	494151.605972
881	355337.307670	494147.771868
882	355279.226117	494159.981248
883	355171.806909	494229.889748
884	355153.883708	494275.356442
885	355177.103436	494397.779051
886	355189.302246	494416.321382
887	355209.576775	494447.117065
888	355213.413376	494441.692494
889	355243.924194	494473.229386
890	355275.022318	494518.680666
891	355320.028522	494549.031432
892	355330.645383	494564.723922
893	355352.292607	494576.611035
894	355399.749944	494625.337324
895	355439.883876	494655.964712
896	355488.107606	494685.591875
897	355534.468279	494718.249610
898	355544.146107	494725.890364
899	355581.315329	494756.703060
900	355628.277210	494794.372623
901	355648.134654	494814.059050
902	355657.881927	494817.946702
903	355678.573187	494832.145045
904	355691.183434	494846.683251
905	355717.073269	494876.978199
906	355723.966825	494885.438628
907	355734.842553	494906.694064
908	355740.638589	494923.951817
909	355742.835885	494921.911311
910	355746.650561	494923.968606
911	355779.752929	494966.734726
912	355785.412090	494962.621890
913	355788.149467	494966.564834

914	355783.258512	494969.682749
915	355812.947386	495013.298759
916	355819.729097	495012.990732
917	355850.608768	495055.378173
918	355847.494160	495052.457593
919	355830.515728	495064.766128
920	355877.558997	495112.435306
921	355911.649606	495146.427573
922	355906.218647	495153.593787
923	355946.201379	495186.986534
924	355942.151776	495192.317925
925	355987.373021	495215.669964
926	356025.950682	495243.626585
927	356046.086399	495253.301675
928	356068.643922	495261.148502
929	356079.496879	495249.026880
930	356132.059244	495249.337613
931	356214.002770	495232.980187
932	356306.520761	495198.328685
933	356389.334499	495161.438578
934	356416.778533	495138.651287
935	356470.015304	495122.606598
936	356470.550046	495128.350736
937	356515.060663	495117.467693
938	356543.132185	495118.555749
939	356561.270193	495121.473481
940	356572.901747	495113.347782
941	356576.306049	495110.967823
942	356588.584742	495097.770159
943	356609.598720	495089.962993
944	356641.558863	495081.023770
945	356633.146019	495071.661997
946	356630.739712	495067.438362
947	356637.826854	495065.120055
948	356618.129491	495027.074353
949	356604.763080	495001.458038
950	356600.716249	494993.496265
951	356574.117320	494941.139060
952	356556.072901	494905.350734
953	356553.872252	494900.990454
954	356514.890434	494824.985737
955	356487.060393	494771.357764
956	356463.915032	494725.931118
957	356463.874630	494724.051982
958	356473.532830	494719.880627
959	356762.968995	494594.752238
960	356844.877973	494559.899727
961	356935.805344	494521.198714
962	357030.582034	494480.893655
963	357041.426088	494476.274105
964	357042.126848	494475.981518
965	357044.189158	494475.105041
966	357045.155847	494474.683879
967	357104.853255	494449.279588
968	357118.125788	494443.661769

969	357122.516016	494441.770249
970	357125.456372	494440.515469
971	357126.183110	494440.206293
972	357130.825780	494438.902546
973	357131.795509	494442.932304
974	357133.616982	494470.970181
975	357144.561152	494638.116685
976	357148.550840	494652.391730
977	357158.453476	494686.941380
978	357169.903002	494715.159867
979	357175.297495	494714.016240
980	357251.207809	494889.906782
981	357349.708874	494934.351261
982	357336.217630	494844.174315
983	357322.577279	494753.091939
984	357318.091634	494723.699399
985	357326.836835	494726.599010
986	357330.636217	494727.797181
987	357399.421120	494750.171695
988	357511.794467	494794.590377
989	357661.243680	494812.791542
990	357699.883425	494841.446237
991	357709.594934	494855.737367
992	357759.104465	494928.492697
993	357729.195824	494813.307826
994	357698.356041	494658.263809
995	357737.884721	494635.848383
996	357898.377794	494890.268078
997	357935.948157	494948.941409
998	358001.801859	494924.126370
999	358055.777251	494886.304853
1000	358100.723653	494844.952664
1001	358171.015339	494806.481185
1002	358148.023163	494765.853306
1003	358111.679271	494704.737842
1004	358069.414214	494636.062301
1005	357995.813117	494516.032168
1006	357985.362871	494498.984154
1007	357990.189912	494496.368436
1008	357925.514107	494389.127155
1009	357926.578484	494377.823958
1010	358015.203677	494283.944910
1011	358155.792732	494131.116932
1012	358321.251109	493958.517579
1013	358327.247639	493952.143430
1014	358270.807967	493920.810223
1015	358193.794133	493871.444110
1016	358166.878591	493854.035162
1017	358185.817072	493840.783566
1018	358215.936943	493823.761793
1019	358300.280978	493781.901859
1020	358269.527644	493689.899550
1021	358089.473789	493746.448411
1022	358037.544234	493762.390777
1023	358008.047346	493665.776852

1024	357965.640295	493513.289072
1025	357936.251148	493408.604735
1026	357914.874243	493338.872499
1027	357855.865263	493146.401488
1028	357848.762443	493121.962339
1029	357885.221241	493109.838116
1030	357972.795638	493080.717637
1031	357966.114275	493053.646205
1032	357956.823384	493016.026234
1033	357955.102111	493011.330480
1034	357972.950838	493004.005326
1035	357997.612510	492990.809942
1036	358027.175077	492974.806457
1037	358034.383006	492973.134482
1038	358059.086317	492967.459463
1039	358077.839770	492968.367103
1040	358092.467442	492967.256853
1041	358211.665234	492922.456859
1042	358216.326850	492920.606663
1043	358294.921221	492887.193886
1044	358514.102568	492813.164996
1045	358525.545371	492804.145327
1046	358475.659698	492663.016578
1047	358435.470063	492551.262794
1048	358375.825358	492378.170233
1049	358210.290597	491896.729987
1050	358208.920272	491891.309312
1051	358210.432471	491891.184178
1052	358221.986741	491883.141173
1053	358225.948370	491880.673346
1054	358232.250227	491871.658862
1055	358269.036067	491818.995378
1056	358311.477353	491753.776117
1057	358372.906695	491690.251890
1058	358407.047298	491671.157232
1059	358465.945827	491615.374681
1060	358472.175063	491612.637024
1061	358468.703672	491607.749644
1062	358465.800677	491603.106336
1063	358510.339053	491577.118139
1064	358555.153009	491540.118198
1065	358589.385107	491518.218307
1066	358602.051061	491510.747922
1067	358645.931163	491485.035123
1068	358726.942383	491433.076905
1069	358735.903816	491425.266079
1070	358751.104994	491402.415417
1071	358760.065415	491388.815744
1072	358804.393690	491331.832599
1073	358840.786333	491296.942803
1074	358869.983101	491273.776932
1075	358878.836979	491268.223927
1076	358900.380124	491260.350581
1077	358911.849322	491256.922933
1078	358936.081196	491249.680769

1079	358981.742751	491240.529800
1080	359018.419963	491238.604459
1081	359071.719969	491234.562462
1082	359118.994221	491222.542780
1083	359141.500525	491203.649220
1084	359145.096892	491201.413891
1085	359160.152105	491192.003367
1086	359199.097648	491169.479612
1087	359231.473564	491153.850913
1088	359235.943470	491151.592998
1089	359287.692004	491127.508899
1090	359333.887849	491106.166582
1091	359355.203606	491096.320933
1092	359277.720498	490914.816838
1093	359255.525859	490862.965840
1094	359211.171438	490759.299561
1095	359166.917746	490655.861170
1096	359148.542728	490613.181855
1097	359147.570582	490610.942581
1098	359285.087413	490538.599122
1099	359380.634364	490481.438102
1100	359349.661259	490412.496774
1101	359365.739003	490402.099043
1102	359277.566125	490197.731314
1103	359270.959592	490188.612367
1104	359038.556554	489673.225579
1105	359014.465561	489622.252747
1106	359009.947411	489611.365934
1107	359015.454702	489609.305417
1108	359033.695715	489594.115728
1109	359044.983412	489575.345322
1110	359050.813499	489562.426954
1111	359057.262273	489535.172918
1112	359065.037808	489491.746155
1113	359065.716747	489477.432299
1114	359071.305545	489394.291704
1115	359072.238090	489377.981914
1116	359071.012834	489352.074781
1117	359068.349511	489333.935781
1118	359052.485374	489292.194034
1119	359040.010266	489260.457936
1120	359037.260830	489253.463497
1121	359034.328099	489246.002762
1122	359063.136211	489243.724863
1123	359067.592118	489240.446700
1124	359099.358501	489212.982050
1125	359180.362284	489170.931371
1126	359238.255427	489141.504883
1127	359307.793680	489122.695031
1128	359376.991213	489105.390848
1129	359395.791605	489100.875887
1130	359383.956340	489072.199240
1131	359314.449236	488913.203173
1132	359324.696137	488906.017897
1133	359488.251741	488793.820474

1134	359619.253039	488703.339162
1135	359550.258884	488569.851771
1136	359466.932366	488409.862675
1137	359481.444928	488386.030512
1138	359569.287455	488350.857077
1139	359528.294117	488294.600644
1140	359520.234890	488283.239242
1141	359613.680290	488245.948250
1142	359664.425559	488224.430240
1143	359744.288412	488204.426526
1144	359720.049416	488148.591535
1145	359706.838157	488118.136418
1146	359696.587626	488094.531992
1147	359691.985435	488083.911362
1148	359679.196557	488054.460869
1149	359665.229134	488022.261706
1150	359653.521559	487992.220516
1151	359642.609219	487964.204287
1152	359619.934144	487906.918885
1153	359620.232785	487905.628997
1154	359651.028933	487876.643554
1155	359675.465848	487853.643655
1156	359696.704308	487833.517104
1157	359707.352550	487823.422889
1158	359718.673825	487813.107013
1159	359740.829613	487792.890983
1160	359762.995711	487772.684624
1161	359785.161808	487752.478264
1162	359807.317911	487732.272227
1163	359809.834895	487729.980884
1164	359812.851716	487721.141983
1165	359820.640126	487698.306654
1166	359822.340074	487693.310923
1167	359828.973351	487665.341512
1168	359836.823125	487632.271884
1169	359837.351390	487630.034409
1170	359844.552046	487599.176145
1171	359846.617719	487590.307792
1172	359857.631101	487553.378911
1173	359860.142279	487545.833244
1174	359863.113101	487537.082989
1175	359865.142951	487520.258600
1176	359848.883258	487470.448689
1177	359809.516927	487335.190878
1178	359806.269578	487323.462478
1179	359949.516232	487100.923071
1180	359962.738919	487090.636228
1181	360058.380719	487050.466533
1182	360026.260045	486965.648703
1183	360012.350460	486957.973548
1184	359994.082487	486947.887778
1185	359935.436723	486922.150883
1186	359914.323652	486857.374531
1187	359907.460305	486844.163950
1188	359899.609131	486825.839423

1189	359891.096302	486805.970601
1190	359887.851336	486798.396895
1191	359899.290098	486794.971981
1192	359904.890188	486792.820276
1193	359916.165035	486788.488178
1194	359920.930275	486786.959277
1195	359940.717975	486778.227220
1196	359964.276287	486769.125310
1197	360011.340135	486750.917426
1198	360030.732556	486743.403653
1199	360036.002997	486740.919082
1200	360036.728048	486742.378418
1201	360055.241700	486735.094838
1202	360063.262736	486732.186804
1203	360075.965739	486727.616967
1204	360089.122450	486720.181376
1205	360114.363191	486709.053368
1206	360132.653759	486700.166958
1207	360175.476182	486677.551845
1208	360218.477131	486655.762197
1209	360260.297263	486625.939792
1210	360262.758866	486624.221310
1211	360279.002442	486612.008327
1212	360304.495300	486592.839933
1213	360307.816975	486590.342325
1214	360335.281261	486566.124767
1215	360416.373056	486523.187371
1216	360464.021577	486498.220068
1217	360487.143293	486486.104545
1218	360508.097682	486477.260258
1219	360512.940857	486475.212847
1220	360513.614189	486474.932640
1221	360535.781969	486465.569360
1222	360556.351988	486461.294384
1223	360570.098062	486458.437599
1224	360577.746195	486457.687217
1225	360599.101371	486455.591995
1226	360620.953178	486453.448048
1227	360646.778037	486450.914294
1228	360652.831841	486450.594240
1229	360653.661203	486454.484715
1230	360693.017192	486452.373692
1231	360837.061058	486407.259125
1232	360842.144598	486405.448427
1233	360841.402614	486404.073824
1234	360838.916335	486398.172121
1235	360844.719408	486396.475659
1236	360882.651178	486385.365474
1237	360922.425207	486370.575336
1238	360957.113391	486357.818922
1239	360972.109748	486352.306277
1240	361006.333440	486339.724818
1241	361033.574427	486330.593268
1242	361122.900201	486306.235275
1243	361124.822574	486305.608575

1244	361130.100247	486304.193726
1245	361224.035971	486278.492484
1246	361259.925945	486268.671967
1247	361272.588387	486264.749068
1248	361282.345634	486261.726216
1249	361289.698669	486258.661498
1250	361306.256819	486251.760120
1251	361309.814657	486249.925595
1252	361331.784306	486238.597402
1253	361338.511854	486235.081104
1254	361378.014067	486203.764061
1255	361385.456588	486197.354121
1256	361388.326928	486194.882015
1257	361397.448811	486189.235871
1258	361450.287989	486156.452412
1259	361459.566278	486150.685951
1260	361488.777352	486130.584080
1261	361551.237636	486095.840163
1262	361595.983117	486070.312554
1263	361623.275369	486049.305007
1264	361644.633191	486026.325013
1265	361659.171742	486010.729259
1266	361675.399623	485988.858100
1267	361693.626209	485958.967241
1268	361696.957167	485953.504607
1269	361709.415744	485921.445315
1270	361713.319571	485904.594533
1271	361718.478886	485881.285791
1272	361733.399688	485817.395489
1273	361734.720501	485812.013220
1274	361740.078527	485801.342527
1275	361754.458310	485772.898661
1276	361770.200556	485747.402758
1277	361779.645904	485732.105216
1278	361793.787691	485709.201401
1279	361812.993235	485678.096407
1280	361815.697513	485673.786567
1281	361864.747660	485595.677788
1282	361869.048703	485588.930748
1283	361878.163404	485582.352257
1284	361884.175985	485573.950225
1285	361888.779109	485567.517782
1286	361902.838246	485546.859074
1287	361928.144694	485509.673407
1288	361931.844989	485503.911109
1289	361934.269307	485500.602568
1290	361943.553976	485487.601699
1291	361947.274399	485481.670983
1292	361961.203103	485459.419029
1293	361963.769459	485447.905940
1294	361964.854557	485442.618157
1295	361968.185470	485426.303559
1296	361970.857741	485414.818598
1297	361978.017139	485396.516897
1298	361984.332996	485378.718820

1299	361997.395588	485362.409413
1300	362003.630218	485354.607456
1301	362010.908357	485349.366554
1302	362035.551386	485337.978175
1303	362046.905521	485327.352161
1304	362050.462276	485324.634155
1305	362088.006970	485312.226796
1306	362118.634699	485293.210344
1307	362150.859933	485270.201840
1308	362167.634210	485252.128501
1309	362170.141117	485250.237982
1310	362193.167821	485232.873000
1311	362198.203380	485227.936910
1312	362224.905916	485206.247199
1313	362237.864018	485194.350958
1314	362242.284875	485190.298179
1315	362240.948673	485188.419805
1316	362264.961915	485167.935446
1317	362289.134888	485147.305078
1318	362293.857106	485143.292637
1319	362311.596083	485128.151075
1320	362315.996063	485124.592988
1321	362339.379988	485105.693321
1322	362341.238604	485106.883923
1323	362359.183065	485093.194990
1324	362372.225501	485083.214202
1325	362374.657184	485081.335960
1326	362382.554921	485073.780614
1327	362400.249377	485056.787106
1328	362407.628681	485049.740612
1329	362423.519403	485038.086806
1330	362433.762768	485028.507188
1331	362466.837754	484990.338465
1332	362506.020607	484943.246817
1333	362511.014973	484936.420583
1334	362518.687931	484924.794298
1335	362521.583800	484920.406394
1336	362529.549650	484909.244294
1337	362538.864415	484889.734700
1338	362545.532776	484875.991690
1339	362550.792389	484865.132522
1340	362561.593075	484842.513207
1341	362571.384971	484821.508596
1342	362581.219077	484800.413450
1343	362592.994682	484775.153598
1344	362594.682940	484771.532113
1345	362605.234559	484748.897838
1346	362638.803999	484680.597527
1347	362651.577326	484659.380832
1348	362663.170789	484640.123913
1349	362720.514910	484563.215541
1350	362735.818782	484553.938628
1351	362741.940331	484550.227863
1352	362762.770602	484537.600954
1353	362787.731878	484525.018910

1354	362810.670952	484513.456184
1355	362818.243074	484509.639363
1356	362900.608765	484472.913913
1357	362906.231636	484470.408841
1358	362909.171415	484469.096742
1359	362926.018258	484461.577566
1360	362947.435600	484452.051862
1361	362952.547301	484449.774523
1362	362970.812504	484441.637105
1363	363042.914865	484409.514439
1364	363051.465761	484408.096108
1365	363075.957269	484397.327778
1366	363107.670314	484383.023865
1367	363132.275260	484371.926005
1368	363152.323735	484362.883304
1369	363156.998401	484359.947396
1370	363176.808459	484347.505752
1371	363183.818172	484343.103325
1372	363192.584708	484334.268298
1373	363203.914522	484322.849967
1374	363207.559948	484317.777799
1375	363215.199147	484306.790427
1376	363224.470317	484286.896683
1377	363235.273813	484254.299001
1378	363237.056252	484247.984560
1379	363266.336753	484160.571997
1380	363274.161196	484128.208469
1381	363275.249887	484106.688590
1382	363272.377123	484082.273195
1383	363246.203577	483945.743450
1384	363223.009011	483806.303476
1385	363217.040762	483760.635033
1386	363215.011782	483728.111705
1387	363218.098323	483697.375543
1388	363220.845241	483660.634381
1389	363218.900419	483637.560454
1390	363220.980237	483625.678756
1391	363229.729659	483588.199139
1392	363230.394044	483582.782372
1393	363238.245162	483518.462213
1394	363242.200003	483470.400000
1395	363253.708447	483441.156961
1396	363252.037182	483423.181475
1397	363245.652839	483387.588802
1398	363220.731351	483308.904467
1399	363211.348664	483266.305981
1400	363211.456279	483142.790119
1401	363215.293279	483112.871194
1402	363215.427283	483109.817127
1403	363222.228545	483083.400252
1404	363227.830029	483064.147460
1405	363230.254572	483056.477015
1406	363240.344845	483024.260355
1407	363264.600953	482946.814453
1408	363317.156516	482779.013142

1409	363397.393999	482608.750636
1410	363402.134133	482598.155745
1411	363454.081252	482483.046991
1412	363603.603528	482250.908482
1413	363635.834640	482210.452582
1414	363729.651114	482125.196512
1415	363819.901306	482049.849875
1416	363838.972158	482034.405166
1417	363967.150073	481933.571716
1418	363971.572143	481929.938521
1419	363997.738841	481887.023730
1420	363986.522241	481885.638063
1421	364009.300086	481844.757378
1422	364053.222106	481777.362690
1423	364101.092665	481707.439581
1424	364143.694033	481653.226841
1425	364158.624928	481632.506638
1426	364184.410399	481594.790602
1427	364219.036773	481544.719880
1428	364250.884929	481504.564922
1429	364282.397626	481461.730452
1430	364286.576101	481456.045194
1431	364308.801871	481425.845753
1432	364313.473000	481421.174903
1433	364359.998552	481401.929517
1434	364382.341060	481387.831439
1435	364468.039454	481359.165994
1436	364510.053585	481308.272516
1437	364512.813427	481304.293545
1438	364526.374579	481283.479114
1439	364541.376980	481260.452576
1440	364543.586348	481256.694971
1441	364552.065840	481241.872973
1442	364554.286068	481236.380345
1443	364556.859431	481230.116466
1444	364560.440644	481216.142039
1445	364560.491450	481214.096291
1446	364560.896334	481209.882417
1447	364563.160650	481186.314830
1448	364565.424968	481162.747242
1449	364567.689289	481139.179653
1450	364565.826158	481102.058257
1451	364563.795299	481080.809795
1452	364559.141804	481059.837222
1453	364548.469041	481024.602225
1454	364548.082504	481023.154322
1455	364546.635713	481017.085775
1456	364540.969548	481001.485090
1457	364541.901977	480988.505114
1458	364543.936349	480973.556633
1459	364544.774310	480968.718068
1460	364544.788051	480967.479822
1461	364544.844899	480962.510567
1462	364545.797643	480956.057975
1463	364547.036767	480947.663925

1464	364547.686463	480942.879446
1465	364549.445792	480929.920982
1466	364552.358905	480913.484894
1467	364555.924473	480890.576840
1468	364558.387780	480870.084571
1469	364565.148362	480824.819929
1470	364567.218458	480819.526974
1471	364568.295607	480812.608324
1472	364566.787602	480797.931172
1473	364565.125599	480784.918176
1474	364566.663751	480765.381717
1475	364566.697854	480762.214404
1476	364559.906998	480748.464306
1477	364532.272614	480705.654755
1478	364515.021880	480679.252609
1479	364500.880640	480665.593390
1480	364491.897524	480660.880580
1481	364403.563745	480627.687371
1482	364395.018396	480622.590434
1483	364393.423488	480621.201306
1484	364388.452820	480616.849849
1485	364363.409204	480594.699752
1486	364316.137992	480554.243606
1487	364313.087831	480550.943731
1488	364314.638533	480549.759194
1489	364300.598587	480536.229049
1490	364293.100947	480525.344079
1491	364272.999905	480488.830117
1492	364272.039040	480485.263668
1493	364259.909105	480460.406444
1494	364250.084415	480443.425530
1495	364240.102758	480430.161734
1496	364220.813215	480411.316629
1497	364201.463803	480395.028417
1498	364108.806726	480317.030255
1499	364085.981496	480298.735740
1500	364083.927632	480296.984371
1501	364075.302765	480296.017731
1502	364075.345802	480291.027400
1503	364072.623302	480288.605800
1504	364028.622402	480250.426400
1505	364013.763802	480234.197200
1506	364002.556902	480211.659800
1507	363996.833102	480189.486700
1508	363995.218802	480088.375100
1509	363993.636602	479988.132700
1510	363991.057402	479811.241500
1511	363994.000602	479761.528600
1512	363995.600802	479746.362000
1513	363998.343402	479720.523400
1514	363999.300002	479715.951800
1515	364000.141402	479711.002000
1516	364000.823402	479707.533800
1517	364004.424402	479690.300300
1518	364009.122602	479665.644300

1519	364012.678602	479652.400000
1520	364015.928702	479632.192400
1521	364024.306402	479620.640900
1522	364028.044602	479608.283800
1523	364035.515002	479591.106900
1524	364041.950402	479573.544400
1525	364052.608402	479545.397400
1526	364062.710802	479515.388800
1527	364075.403002	479476.727500
1528	364080.551302	479461.512000
1529	364088.464102	479446.698100
1530	364092.067402	479438.331400
1531	364101.870802	479413.455100
1532	364107.829502	479404.815900
1533	364111.275402	479400.260000
1534	364118.668102	479383.973900
1535	364126.325302	479368.743700
1536	364130.190902	479357.644400
1537	364136.694102	479321.077700
1538	364142.563002	479302.293500
1539	364146.976002	479270.004200
1540	364176.429102	479064.371400
1541	364178.411502	479050.818900
1542	364190.066602	478970.287000
1543	364206.211402	478856.505000
1544	364209.931802	478830.522900
1545	364210.907702	478823.731900
1546	364211.979502	478815.909900
1547	364226.340002	478717.470000
1548	364227.741502	478532.973700
1549	364227.241501	478532.960600
1550	364227.489802	478463.242100
1551	364228.652602	478259.728800
1552	364228.143502	478252.528400
1553	364188.282902	478138.339000
1554	364184.494302	478127.465100
1555	364116.601102	478024.688200
1556	364096.133902	477972.149200
1557	364079.903702	477933.287000
1558	364063.381402	477894.258800
1559	364031.208202	477817.779800
1560	363999.402402	477742.575300
1561	363970.267502	477673.301800
1562	363895.338802	477495.978400
1563	363870.730202	477441.777100
1564	363810.077602	477300.064100
1565	363786.806602	477245.724400
1566	363758.866902	477180.483000
1567	363726.371902	477104.588200
1568	363719.139002	477102.018800
1569	363701.031602	477133.647200
1570	363687.873802	477156.670500
1571	363676.908802	477175.604900
1572	363669.865602	477194.765200
1573	363667.456902	477201.326100

1574	363601.530102	477206.383400
1575	363576.615402	477208.296300
1576	363557.433502	477206.941300
1577	363539.482402	477205.669300
1578	363522.532002	477204.473400
1579	363512.756202	477214.684600
1580	363499.655902	477209.966900
1581	363492.304602	477169.072900
1582	363462.640102	477170.881300
1583	363452.388202	477087.812300
1584	363456.864702	477073.165800
1585	363477.374302	477031.607800
1586	363490.918202	477022.814100
1587	363492.524102	477012.405700
1588	363476.465202	477000.471400
1589	363471.665002	476990.901000
1590	363467.744402	476983.507700
1591	363465.932502	476959.391300
1592	363464.741302	476941.863900
1593	363462.084302	476905.033700
1594	363457.365102	476841.871300
1595	363455.589002	476818.903900
1596	363453.224902	476797.514200
1597	363450.898202	476787.539800
1598	363438.270702	476756.934800
1599	363592.712001	476739.991300
1600	363677.419002	476778.949300
1601	363703.769102	476727.424400
1602	363733.535102	476669.164700
1603	363747.182102	476642.466100
1604	363763.106902	476611.317600
1605	363818.680602	476626.076000
1606	363841.588002	476589.493200
1607	363867.201602	476551.253700
1608	363869.513302	476547.813000
1609	363937.148402	476446.226700
1610	363958.421202	476413.615000
1611	363971.656602	476393.319800
1612	363976.463202	476385.946100
1613	364037.514502	476293.337400
1614	364108.224202	476186.360700
1615	364167.829802	476096.201100
1616	364221.437002	476016.160600
1617	364223.609202	476012.751800
1618	364250.895402	475971.840200
1619	364307.054002	475886.886300
1620	364364.464002	475799.166200
1621	364368.174402	475793.487000
1622	364403.616602	475738.718000
1623	364477.466602	475624.590600
1624	364513.143602	475569.448500
1625	364520.083602	475560.925900
1626	364541.068502	475534.985800
1627	364555.424202	475519.093600
1628	364564.599202	475509.540500

1629	364588.425402	475487.400000
1630	364617.966202	475463.561200
1631	364629.529102	475454.645000
1632	364659.440102	475437.358800
1633	364703.094602	475423.591900
1634	364743.519602	475414.847700
1635	364851.030902	475390.174300
1636	364941.376902	475374.104500
1637	365054.784202	475353.648300
1638	365178.378302	475294.785500
1639	365281.995502	475234.178800
1640	365310.474002	475214.503200
1641	365323.257702	475197.693000
1642	365334.136602	475183.388200
1643	365408.324002	475068.356700
1644	365412.503402	475061.891500
1645	365461.322002	474986.175700
1646	365470.972102	474971.198000
1647	365490.956202	474940.103700
1648	365503.590402	474920.426600
1649	365494.387902	474924.362000
1650	365502.082402	474903.123600
1651	365513.146502	474848.580700
1652	365514.334702	474833.249800
1653	365524.497602	474701.707100
1654	365525.350902	474680.203000
1655	365525.254002	474649.235500
1656	365524.764302	474619.502900
1657	365523.031402	474600.383700
1658	365521.545402	474583.950100
1659	365520.651302	474574.205900
1660	365518.292802	474548.137800
1661	365516.371502	474526.951900
1662	365515.657302	474512.846900
1663	365513.476602	474493.154000
1664	365511.828002	474482.330600
1665	365511.124802	474472.653800
1666	365508.689802	474454.813800
1667	365506.065302	474437.006400
1668	365503.580002	474419.147100
1669	365501.971202	474406.863700
1670	365498.815802	474396.231000
1671	365494.520102	474386.273800
1672	365492.775102	474382.239300
1673	365486.538202	474368.520200
1674	365476.385902	474346.328100
1675	365465.566902	474327.254100
1676	365454.171702	474309.167700
1677	365453.272002	474307.720600
1678	365437.950102	474283.240600
1679	365436.196602	474280.765700
1680	365429.208802	474271.315400
1681	365422.302602	474261.974000
1682	365411.504502	474248.777600
1683	365400.655602	474235.511900

1684	365389.796302	474222.226400
1685	365380.559802	474210.627900
1686	365373.951802	474202.621800
1687	365368.468202	474194.240400
1688	365363.724102	474188.018100
1689	365355.935902	474177.789100
1690	365351.320502	474172.194700
1691	365344.358302	474162.424200
1692	365321.953002	474130.984400
1693	365308.228302	474108.521600
1694	365304.772902	474102.241500
1695	365297.138502	474088.661700
1696	365285.734402	474060.499000
1697	365277.072302	474039.086100
1698	365270.218202	474017.568300
1699	365260.283602	473985.786600
1700	365255.929402	473971.581800
1701	365246.728302	473936.441200
1702	365244.457302	473926.876000
1703	365242.260802	473917.639600
1704	365237.772502	473886.452600
1705	365234.342102	473866.747000
1706	365231.257002	473847.436500
1707	365229.882002	473823.823900
1708	365229.856202	473783.498700
1709	365229.851302	473778.790500
1710	365228.249902	473738.017200
1711	365218.007102	473678.789700
1712	365202.603802	473628.090200
1713	365199.713602	473618.563500
1714	365183.551202	473584.598500
1715	365178.825902	473574.657200
1716	365175.928602	473551.565400
1717	365143.841902	473487.850500
1718	365083.673202	473355.057600
1719	365083.339802	473346.825100
1720	365050.338902	473328.486600
1721	365047.333802	473324.409400
1722	365019.636302	473286.144900
1723	365005.977202	473251.025800
1724	365003.112802	473236.850400
1725	365004.248102	473188.652000
1726	365004.815302	473164.522900
1727	365008.789902	473165.687700
1728	365008.221202	473189.706900
1729	365010.677102	473186.574200
1730	365080.081902	473126.329200
1731	365110.089102	473084.100700
1732	365129.572302	473043.486800
1733	365130.908302	472940.205500
1734	365114.011702	472913.168100
1735	365098.067502	472924.053900
1736	365077.986402	472935.786500
1737	365054.740802	472946.383000
1738	365034.981102	472952.423200

1739	365005.071903	472958.953100
1740	364985.519803	472959.022600
1741	364961.997003	472957.477300
1742	364937.427003	472951.758000
1743	364915.953003	472945.106400
1744	364889.691703	472934.172200
1745	364880.496003	472924.812300
1746	364859.208703	472915.019200
1747	364839.508303	472910.852300
1748	364801.783303	472894.997900
1749	364748.776203	472885.122000
1750	364717.892903	472882.628600
1751	364712.909003	472882.937100
1752	364705.427703	472883.380100
1753	364543.631003	472893.196600
1754	364491.272203	472899.176000
1755	364464.516703	472903.163400
1756	364434.860603	472910.659400
1757	364397.734103	472921.557200
1758	364353.618903	472941.798000
1759	364281.999303	472992.936800
1760	364203.826703	473048.764300
1761	364110.799303	473117.641900
1762	364089.953403	473129.005100
1763	364071.953203	473135.051100
1764	364050.314603	473138.947900
1765	364022.720503	473137.938600
1766	363997.538803	473130.628300
1767	363981.121803	473121.717800
1768	363970.758003	473116.092600
1769	363948.610103	473096.085000
1770	363829.295603	472959.888100
1771	363774.589103	472894.155600
1772	363774.713503	472862.555200
1773	363767.403003	472862.326000
1774	363764.625103	472884.896200
1775	363652.448603	472753.829000
1776	363626.003503	472724.474000
1777	363616.249903	472731.216000
1778	363575.193303	472706.460700
1779	363515.276603	472670.319400
1780	363482.151503	472691.588300
1781	363440.211203	472703.542100
1782	363419.129703	472712.319500
1783	363402.208803	472708.913900
1784	363386.919303	472719.440900
1785	363359.337103	472665.600200
1786	363345.520303	472638.630300
1787	363335.643403	472618.283600
1788	363334.470403	472615.860700
1789	363306.822703	472558.712000
1790	363315.883001	472516.162300
1791	363332.423101	472473.059700
1792	363361.225901	472434.826400
1793	363374.994100	472413.284300

1794	363386.911400	472393.077300
1795	363393.663700	472377.459800
1796	363348.235700	472361.191600
1797	363313.400100	472349.725800
1798	363294.320400	472343.451000
1799	363276.151900	472337.283600
1800	363263.090100	472333.914800
1801	363280.403300	472369.423500
1802	363282.933700	472374.596800
1803	363281.847500	472389.356500
1804	363274.906700	472405.806300
1805	363267.051301	472427.706800
1806	363251.010601	472449.010300
1807	363243.341601	472469.198800
1808	363223.131201	472488.240600
1809	363210.165401	472504.173600
1810	363191.684401	472518.133300
1811	363188.229301	472521.299800
1812	363174.828401	472544.836100
1813	363176.744501	472572.899700
1814	363176.708401	472608.737500
1815	363157.650103	472629.412800
1816	363144.894803	472647.562100
1817	363137.157903	472662.823300
1818	363133.059803	472672.286400
1819	363128.721003	472683.872100
1820	363125.630403	472688.103200
1821	363118.625103	472697.696400
1822	363112.194403	472717.068100
1823	363110.648803	472721.697700
1824	363110.884103	472727.172600
1825	363108.793603	472739.417000
1826	363107.385803	472748.973000
1827	363105.557103	472761.353800
1828	363080.272603	472774.887500
1829	363071.545903	472783.604700
1830	363062.645703	472797.872200
1831	363056.278903	472808.096400
1832	362973.736903	472810.903000
1833	362948.281358	472810.661621
1834	362948.276803	472816.771800