



DZIENNIK URZĘDOWY

WOJEWÓDZTWA WIELKOPOLSKIEGO

Poznań, dnia 23 października 2013 r.

Poz. 5744

UCHWAŁA NR XXXVII/729/13 SEJMIKU WOJEWÓDZTWA WIELKOPOLSKIEGO

z dnia 30 września 2013 r.

w sprawie utworzenia Parku Krajobrazowego Puszcza Zielonka

Na podstawie art. 16 ust. 3 ustawy z dnia 16 kwietnia 2004 r. o ochronie przyrody (Dz. U. z 2013 r. poz. 627, poz. 628) Sejmik Województwa Wielkopolskiego uchwala, co następuje:

§ 1. Park Krajobrazowy Puszcza Zielonka, zwany dalej „Parkiem”, obejmuje obszar o powierzchni 12202,0 ha na terenie gmin: Czerwonak (3012,7 ha), Kiszkowo (361,5 ha), Murowana Goślina (6201,1 ha), Pobiedziska (1528,9 ha) i Skoki (1097,8 ha).

§ 2. Wyznaczona wokół Parku otulina ma powierzchnię 9538,55 ha na terenie gmin: Czerwonak (2673,98 ha), Kiszkowo (1054,18 ha), Murowana Goślina (1168,66 ha), Pobiedziska (2432,40 ha), Skoki (857,83 ha) i Swarzędz (1351,50 ha).

§ 3. Przebieg granicy Parku i otuliny określa mapa stanowiąca załącznik nr 1 do uchwały oraz wykaz współrzędnych punktów załamania granicy Parku stanowiący załącznik nr 2 do uchwały i wykaz współrzędnych punktów załamania zewnętrznej granicy otuliny stanowiący załącznik nr 3 do uchwały.

§ 4. Do szczególnych celów ochrony na terenie Parku należy:

1. ochrona i zachowanie jednego z najciekawszych fragmentów krajobrazu południowego w środkowej Wielkopolsce;

2. zachowanie trwałości oraz różnorodności biologicznej ekosystemów leśnych wraz ze spontanicznymi procesami ich dynamiki;

3. zachowanie populacji rzadkich i chronionych gatunków roślin, zwierząt i grzybów oraz ich siedlisk;

4. zachowanie cennych ekosystemów, w tym: bagiennych, leśnych, łąkowych, murawowych, wodnych i zaroślowych;

5. utrzymanie walorów kulturowych, w tym historycznych traktów: Annowskiego, Bednarskiego, Pławińskiego, Poznańskiego i Zielonkowskiego;

6. utrzymanie struktury przestrzennej terenów z uwzględnieniem swoistych cech miejscowego krajobrazu.

§ 5. 1. Na terenie Parku wprowadza się następujące zakazy:

- 1) realizacji przedsięwzięć mogących znacząco oddziaływać na środowisko w rozumieniu przepisów ustawy z dnia 3 października 2008 r. o udostępnianiu informacji o środowisku i jego ochronie, udziale społeczeństwa w ochronie środowiska oraz o ocenach oddziaływania na środowisko, (Dz. U. z 2008 r. Nr 199, poz. 1227, Nr 227, poz. 1505, z 2009 r. Nr 42, poz. 340, Nr 84, poz. 700 i Nr 157, poz. 1241, z 2010 r. Nr 28, poz. 145, Nr 106, poz. 675, Nr 119, poz. 804, Nr 143, poz. 963 i Nr 182, poz. 1228, z 2011 r. Nr 32, poz. 159, Nr 122, poz. 695, Nr 132, poz. 766, Nr 135, poz. 789, Nr 170, poz. 1015, Nr 178, poz. 1060, Nr

- 152, poz. 897 i Nr 163, poz. 981, z 2012 r. poz. 460, poz. 472, poz. 908, poz. 951 i poz. 1529, z 2013 r. poz. 21 i poz. 165);
- 2) umyślnego zabijania dziko występujących zwierząt, niszczenia ich nor, legowisk, innych schronień i miejsc rozrodu oraz tarlisk i złożonej ikry, z wyjątkiem amatorskiego połowu ryb oraz wykonywania czynności w ramach racjonalnej gospodarki rolnej, leśnej, rybackiej i łowieckiej;
 - 3) likwidowania i niszczenia zadrzewień śródpolnych, przydrożnych i nadwodnych, jeżeli nie wynikają z potrzeby ochrony przeciwpowodziowej lub zapewnienia bezpieczeństwa ruchu drogowego lub wodnego lub budowy, odbudowy, utrzymania, remontów lub naprawy urządzeń wodnych;
 - 4) pozyskiwania do celów gospodarczych skał, w tym torfu, oraz skamieniałości, w tym kopalnych szczątków roślin i zwierząt, a także minerałów i bursztynu;
 - 5) wykonywania prac ziemnych trwale zniekształcających rzeźbę terenu, z wyjątkiem prac związanych z zabezpieczeniem przeciwsztormowym, przeciwpowodziowym lub przeciwosuwiskowym lub budową, odbudową, utrzymaniem, remontem lub naprawą urządzeń wodnych;
 - 6) dokonywania zmian stosunków wodnych, jeżeli zmiany te nie służą ochronie przyrody lub racjonalnej gospodarce rolnej, leśnej, wodnej lub rybackiej;
 - 7) budowania nowych obiektów budowlanych w pasie szerokości 100 m od linii brzegów rzek, jezior i innych zbiorników wodnych, z wyjątkiem obiektów służących turystyce wodnej, gospodarce wodnej lub rybackiej;
 - 8) likwidowania, zasypywania i przekształcania zbiorników wodnych, starorzeczy oraz obszarów wodno-błotnych;
 - 9) organizowania rajdów motorowych i samochodowych;
 - 10) używania łodzi motorowych i innego sprzętu motorowego na otwartych zbiornikach wodnych.

2. Zakazy, o których mowa w ust. 1, nie dotyczą ustaleń miejscowych planów zagospodarowania przestrzennego gmin, w tym uchylonych na podstawie art. 87 ust. 3 ustawy z dnia 27 marca 2003 r. o planowaniu i zagospodarowaniu przestrzennym (tekst jednolity: Dz. U. z 2012 r. poz. 647, poz. 951 i poz. 1445. z 2013 r. poz. 21 i poz. 405) oraz decyzji o warunkach zabudowy obowiązujących w dniu wejścia w życie niniejszej uchwały.

3. Zakaz, o którym mowa w ust. 1 pkt. 9, nie dotyczy części Parku obejmującej drogi publiczne.

4. Zakaz, o którym mowa w ust. 1 pkt. 1 nie dotyczy części Parku oznaczonej jako „obszar nr 1A” oraz „obszar nr 1B”. Przebieg granic „obszaru nr 1A” oraz „obszaru nr 1B” określa mapa stanowiąca załącznik nr 4 do uchwały oraz wykaz współrzędnych punktów załamania granicy „obszaru nr 1A” oraz „obszaru nr 1B” stanowiący załącznik nr 5 do uchwały.

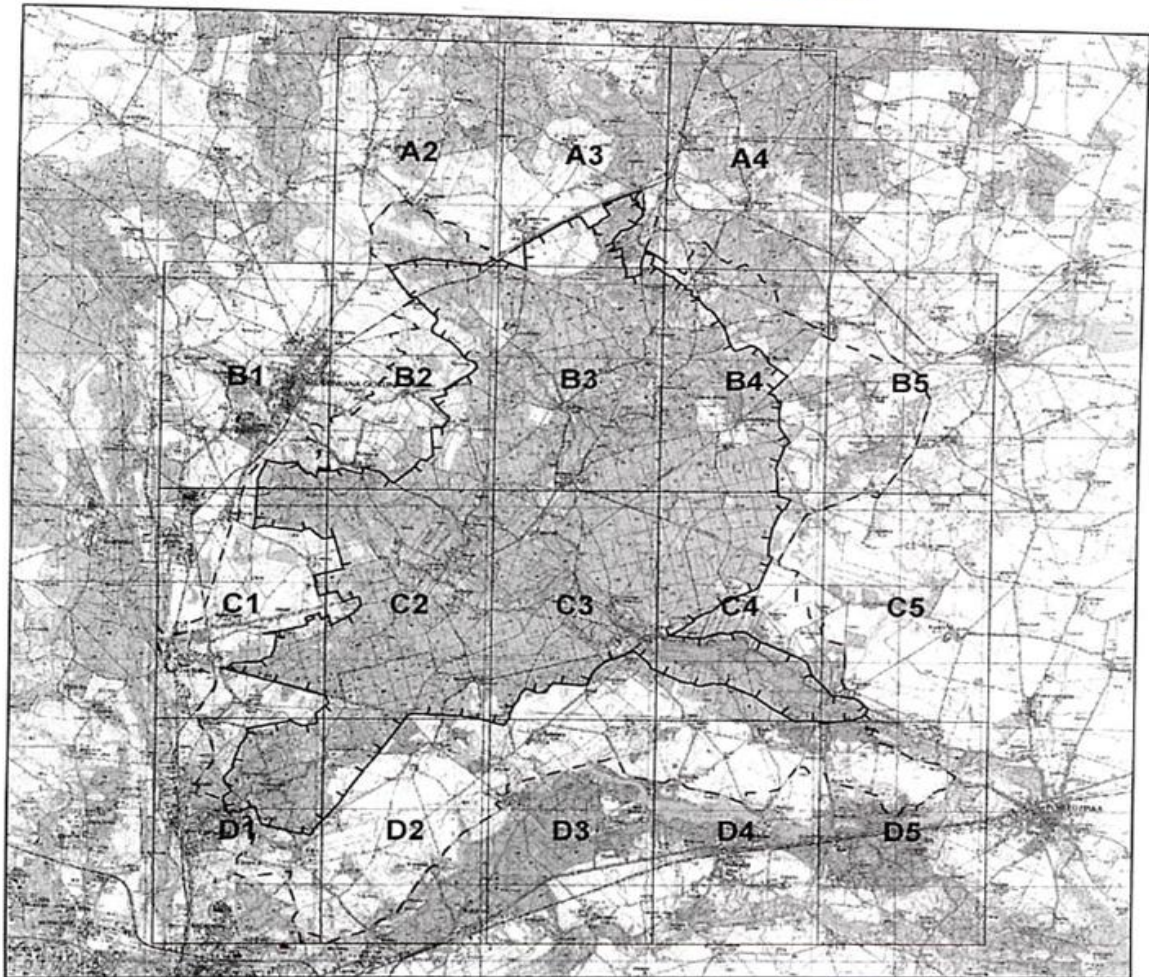
§ 6. 5. Wykonanie uchwały powierza się Zarządowi Województwa Wielkopolskiego.

§ 7. 6. Traci moc rozporządzenie Nr 5/93 Wojewody Poznańskiego z dnia 20 września 1993 r. w sprawie utworzenia Parku Krajobrazowego Puszcza Zielonka (Dz. Urz. Woj. Poznańskiego z 1993 r. Nr 13, poz. 149 ze zm.).

§ 8. 7. Uchwała wchodzi w życie po upływie 14 dni od dnia ogłoszenia w Dzienniku Urzędowym Województwa Wielkopolskiego.

Przewodniczący Sejmiku
Województwa
Wielkopolskiego
(-) Lech Dymarski

Załącznik nr 1 do uchwały Nr XXXVII/729/13
Sejmiku Województwa Wielkopolskiego
z dnia 30 września 2013 r.

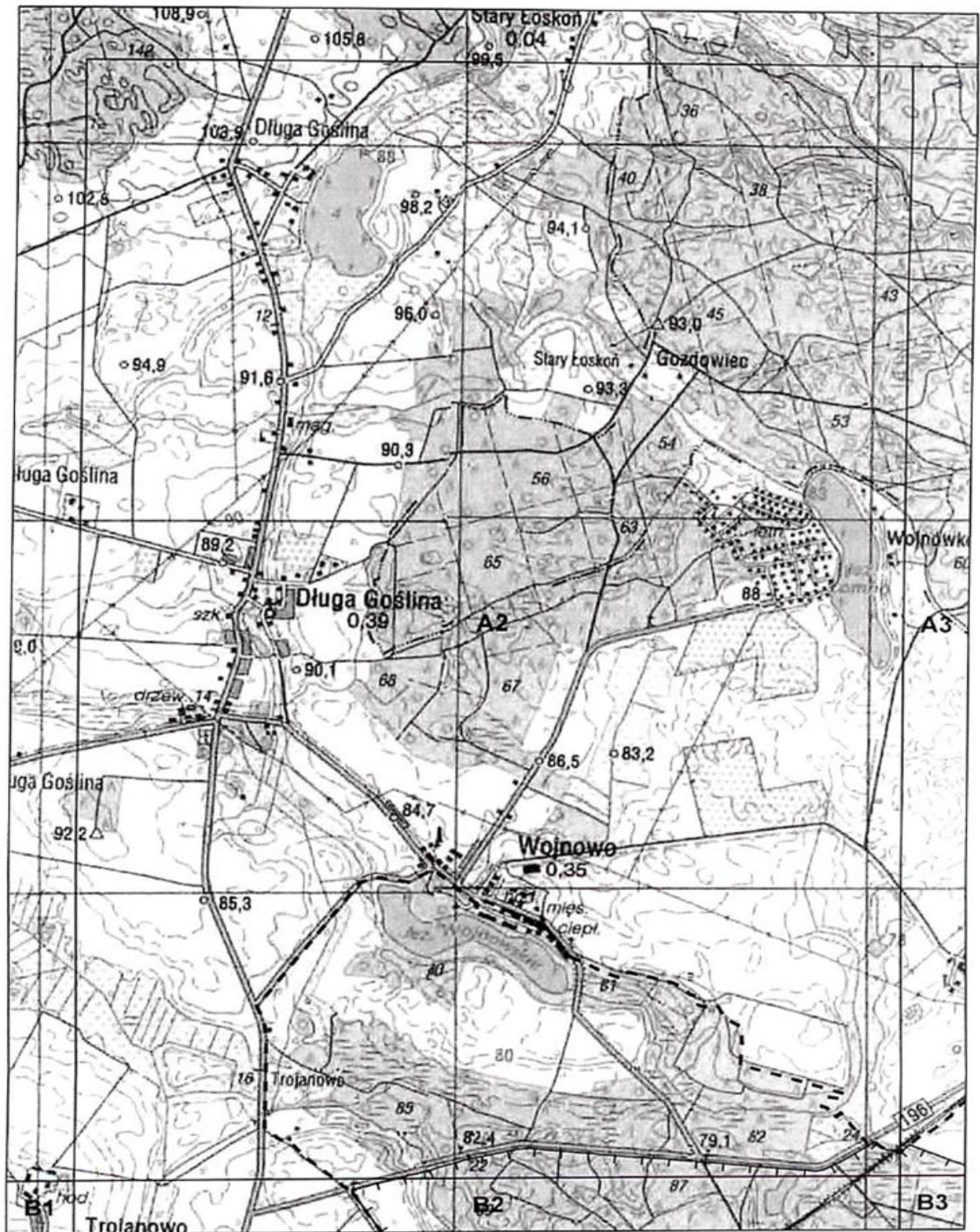


Przebieg granic i otuliny
Parku Krajobrazowego Puszcza Zielonka
(indeks arkuszy)

- granica parku krajobrazowego
- - - otulina parku krajobrazowego

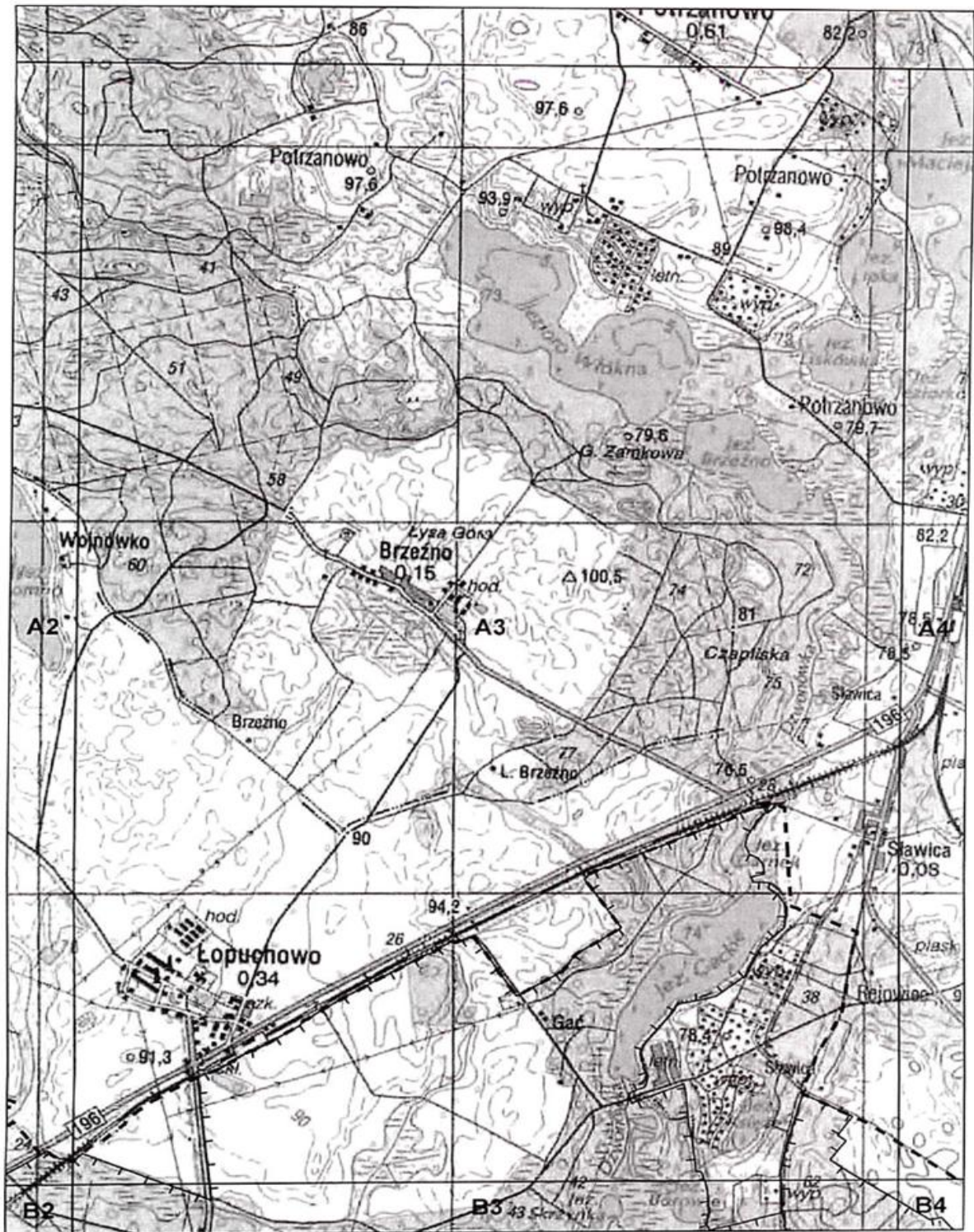
0 2 150 4 300 8 600
m

Układ współrzędnych: PUWG 1992
Odwzorowanie: Gaussa-Kruegera
Południk środkowy strefy: 19 E°



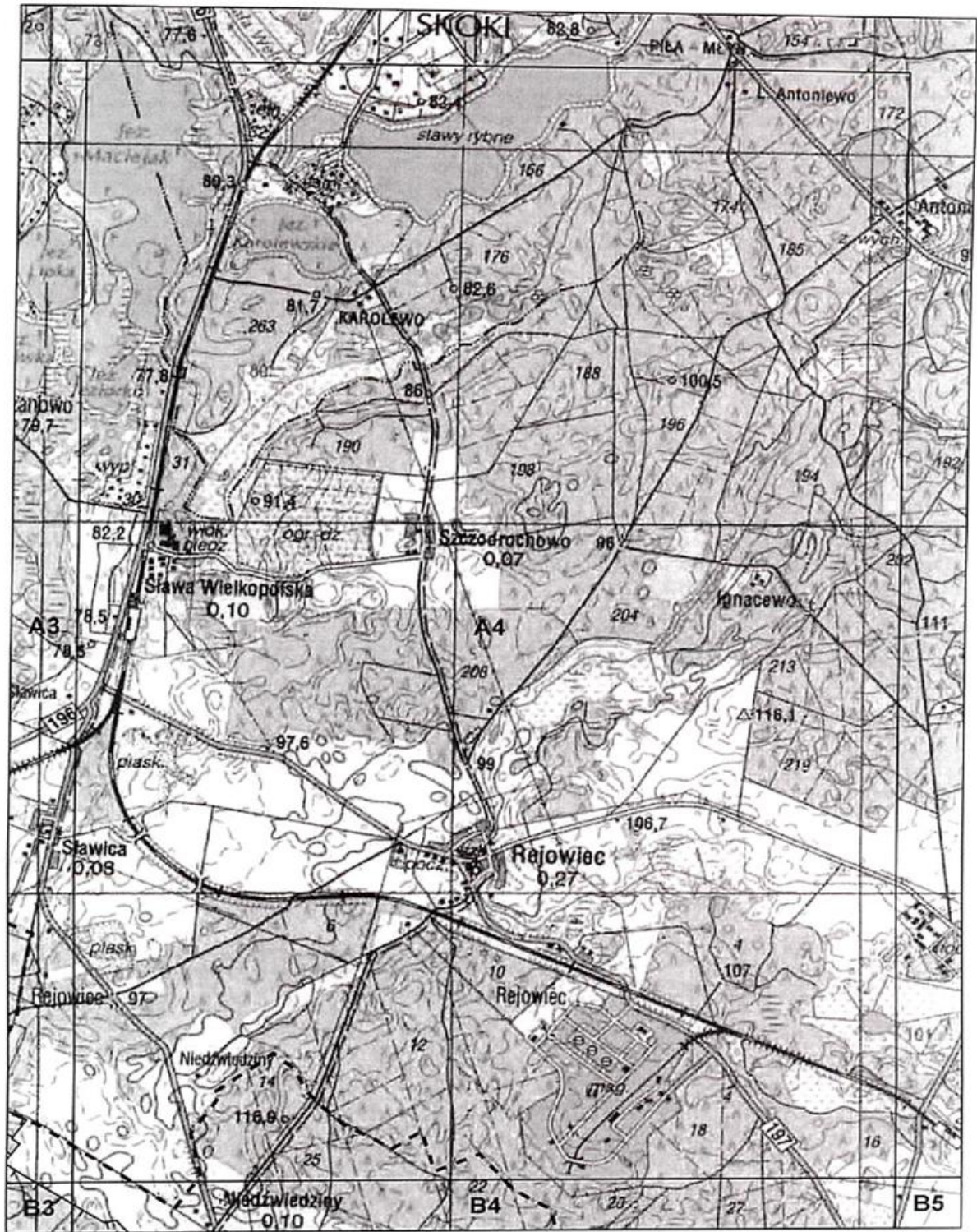
- granica parku krajobrazowego
- - - otulina parku krajobrazowego

1:25 000



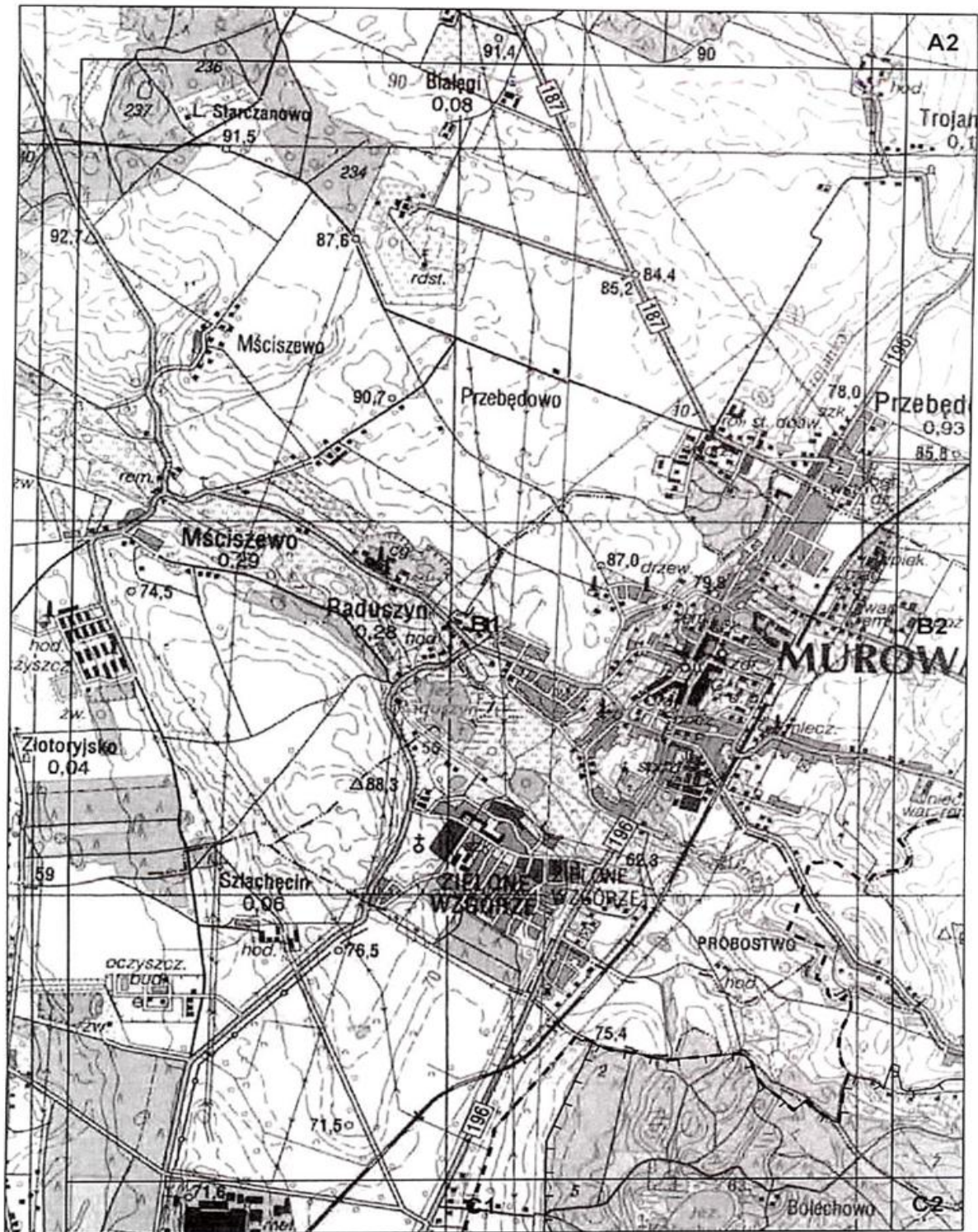
— granica parku krajobrazowego
- - - otulina parku krajobrazowego

1:25 000



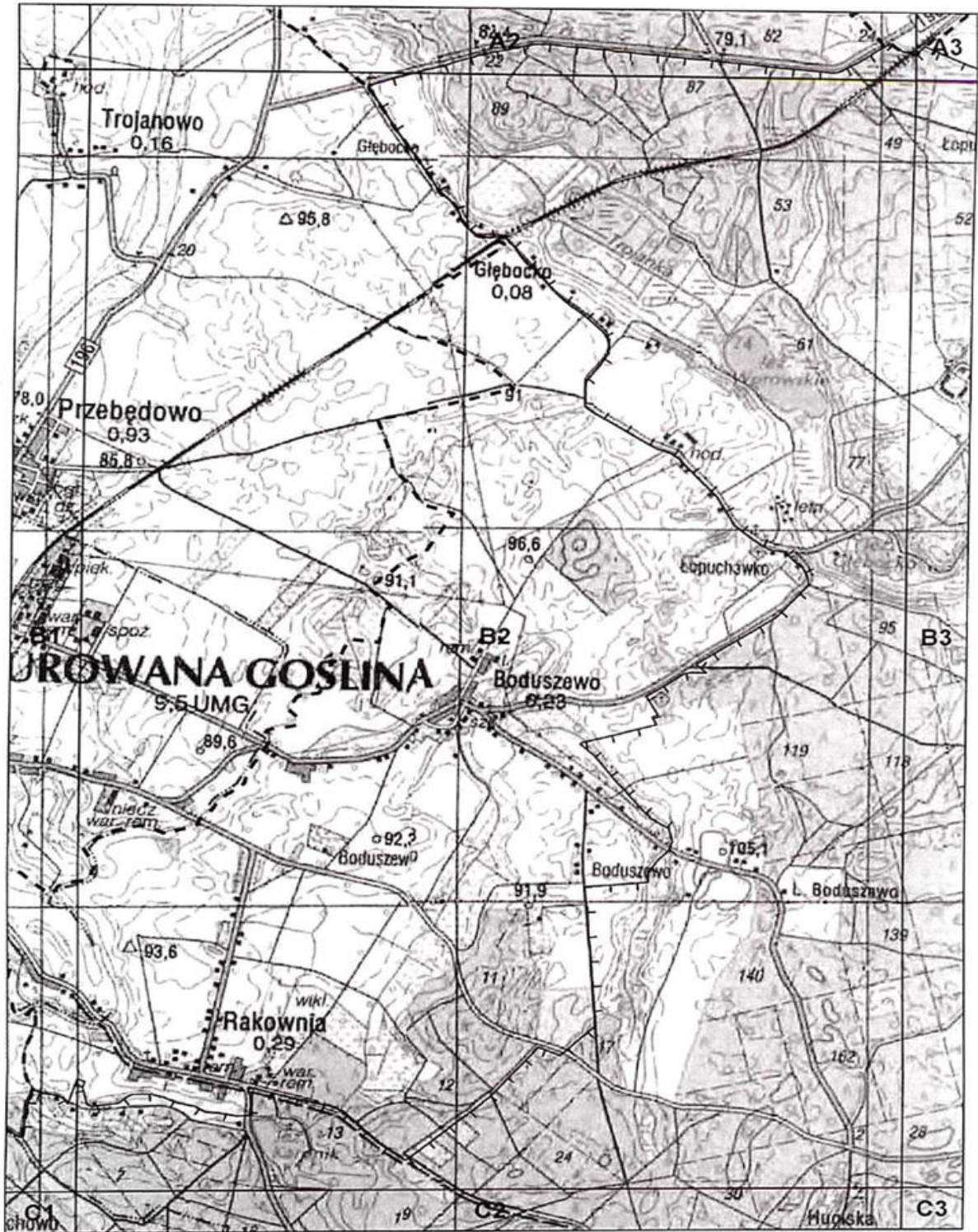
— granica parku krajobrazowego
- - - otulina parku krajobrazowego

1:25 000



1:25 000

- |—| granica parku krajobrazowego
- - - otulina parku krajobrazowego



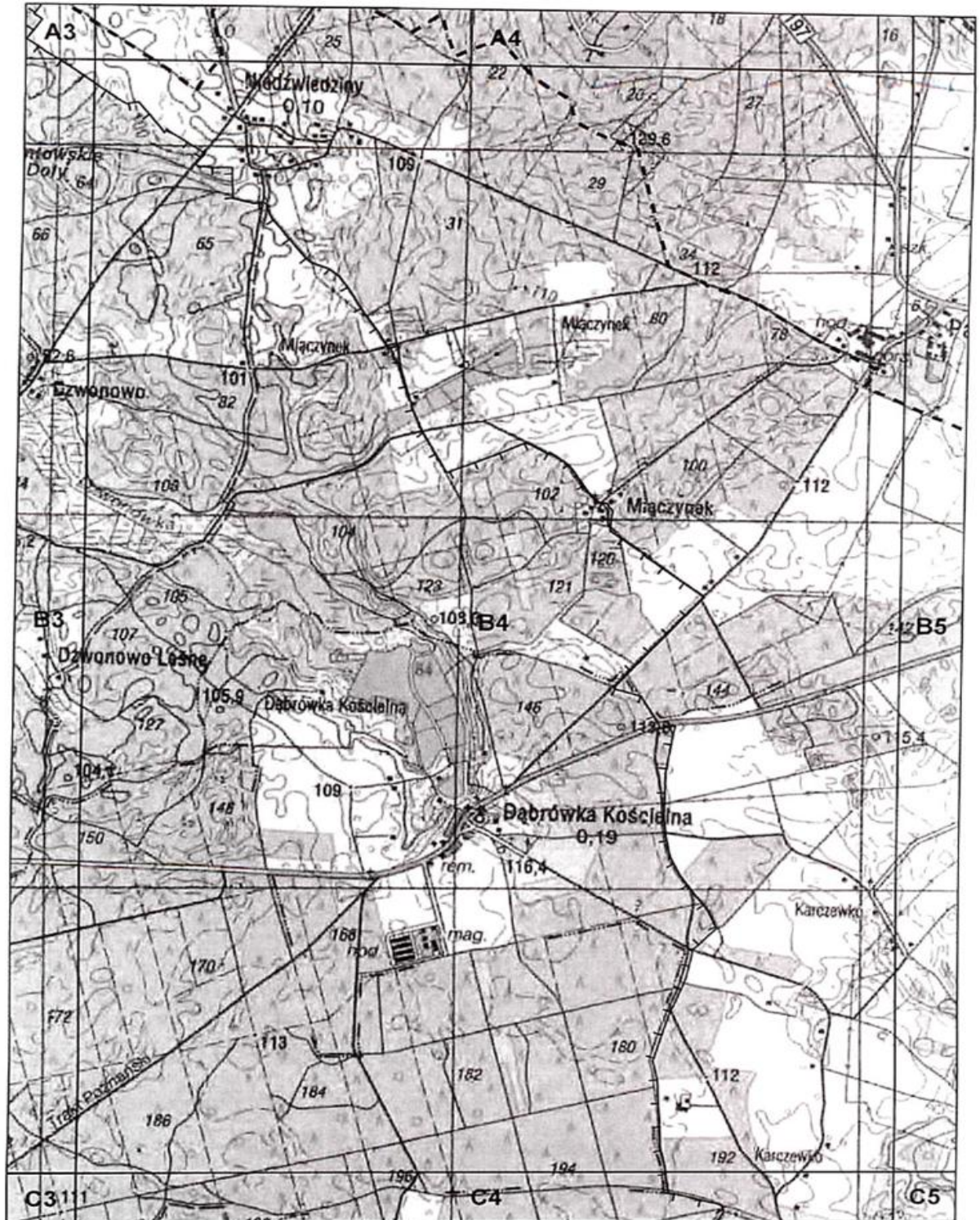
- granica parku krajobrazowego
- otulina parku krajobrazowego

1:25 000



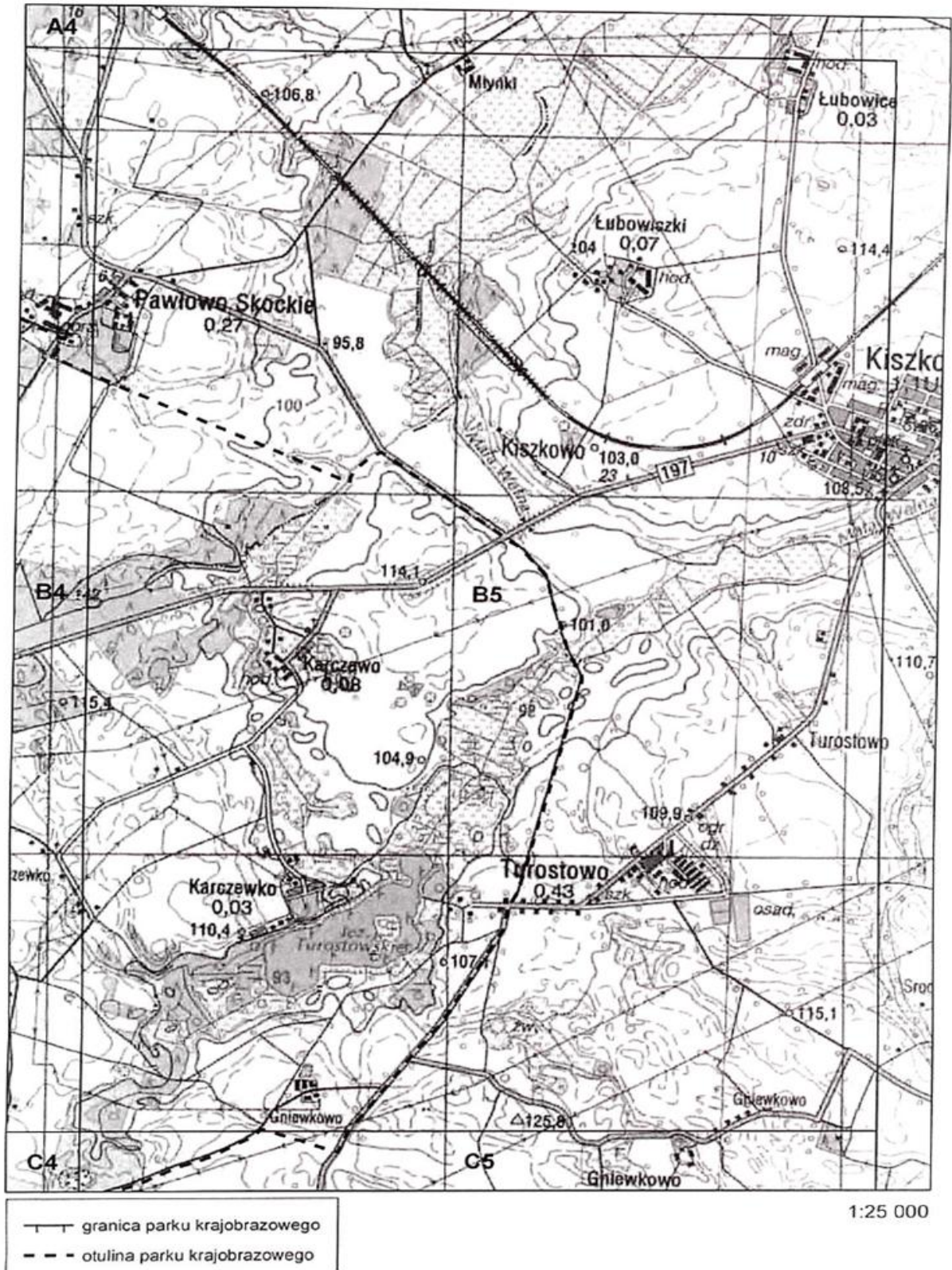
- |— granica parku krajobrazowego
- - - otulina parku krajobrazowego

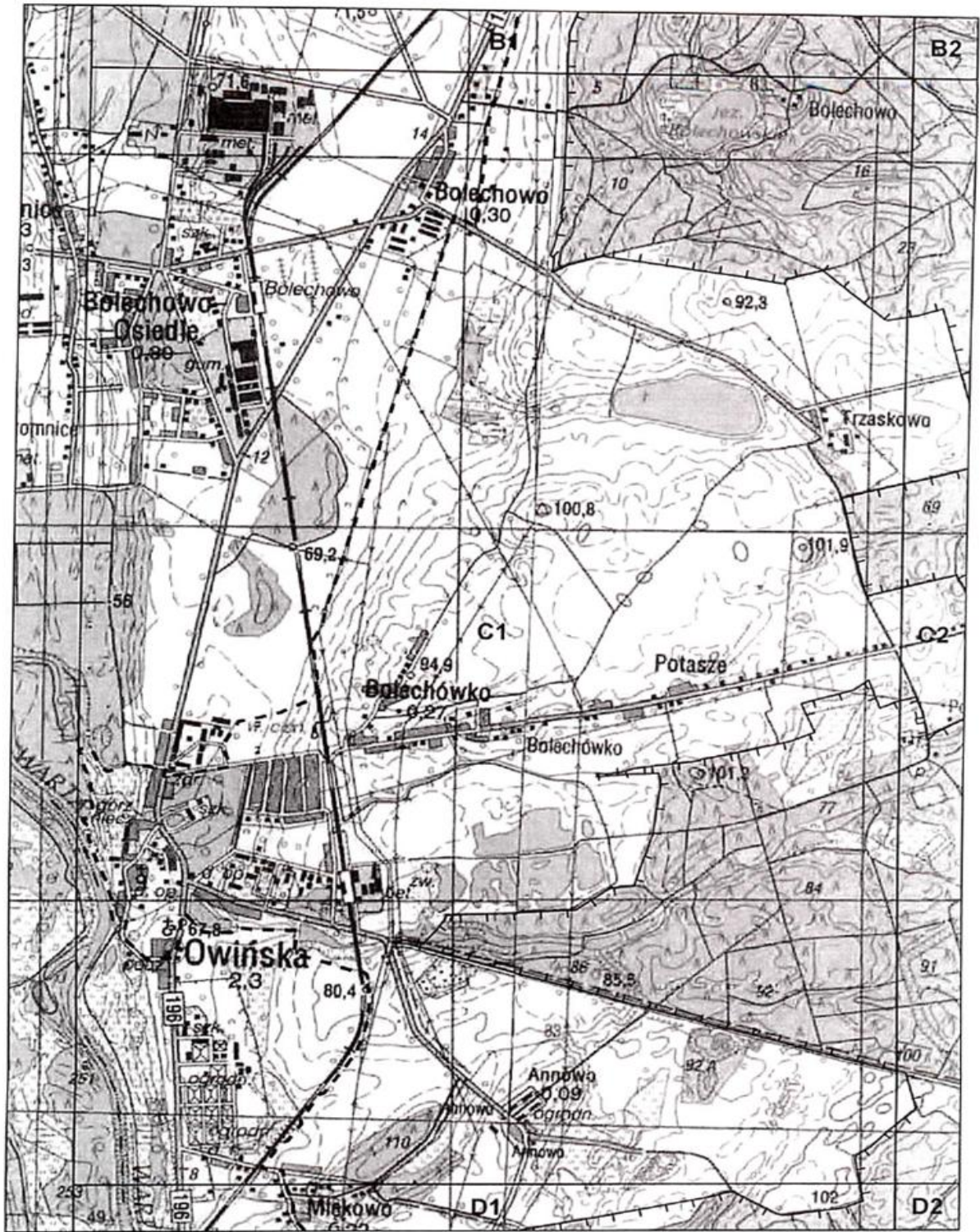
1:25 000



— granica parku krajobrazowego
- - - otulina parku krajobrazowego

1:25 000





— granica parku krajobrazowego
- - - otulina parku krajobrazowego

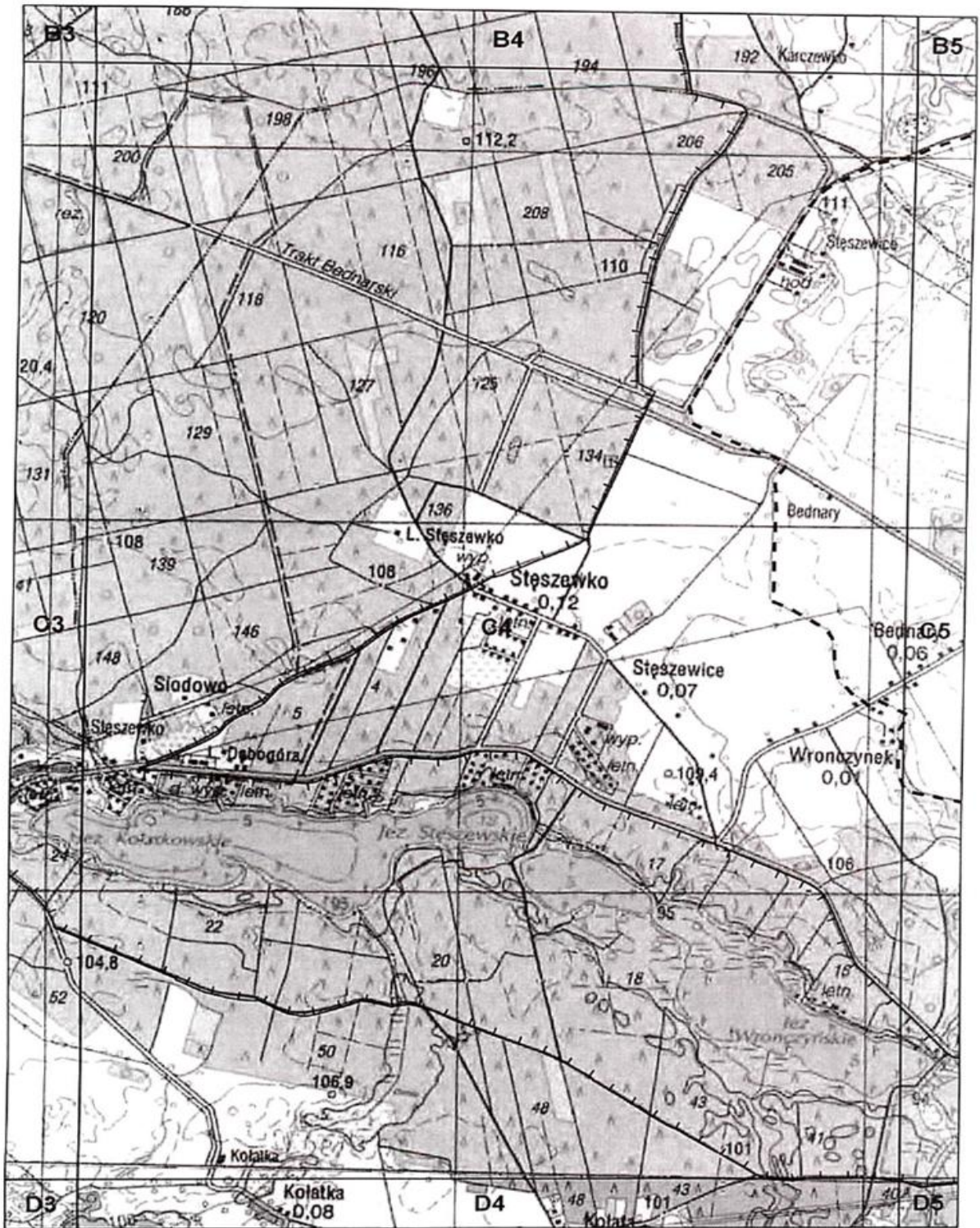
1:25 000



- granica parku krajobrazowego
- - - otulina parku krajobrazowego

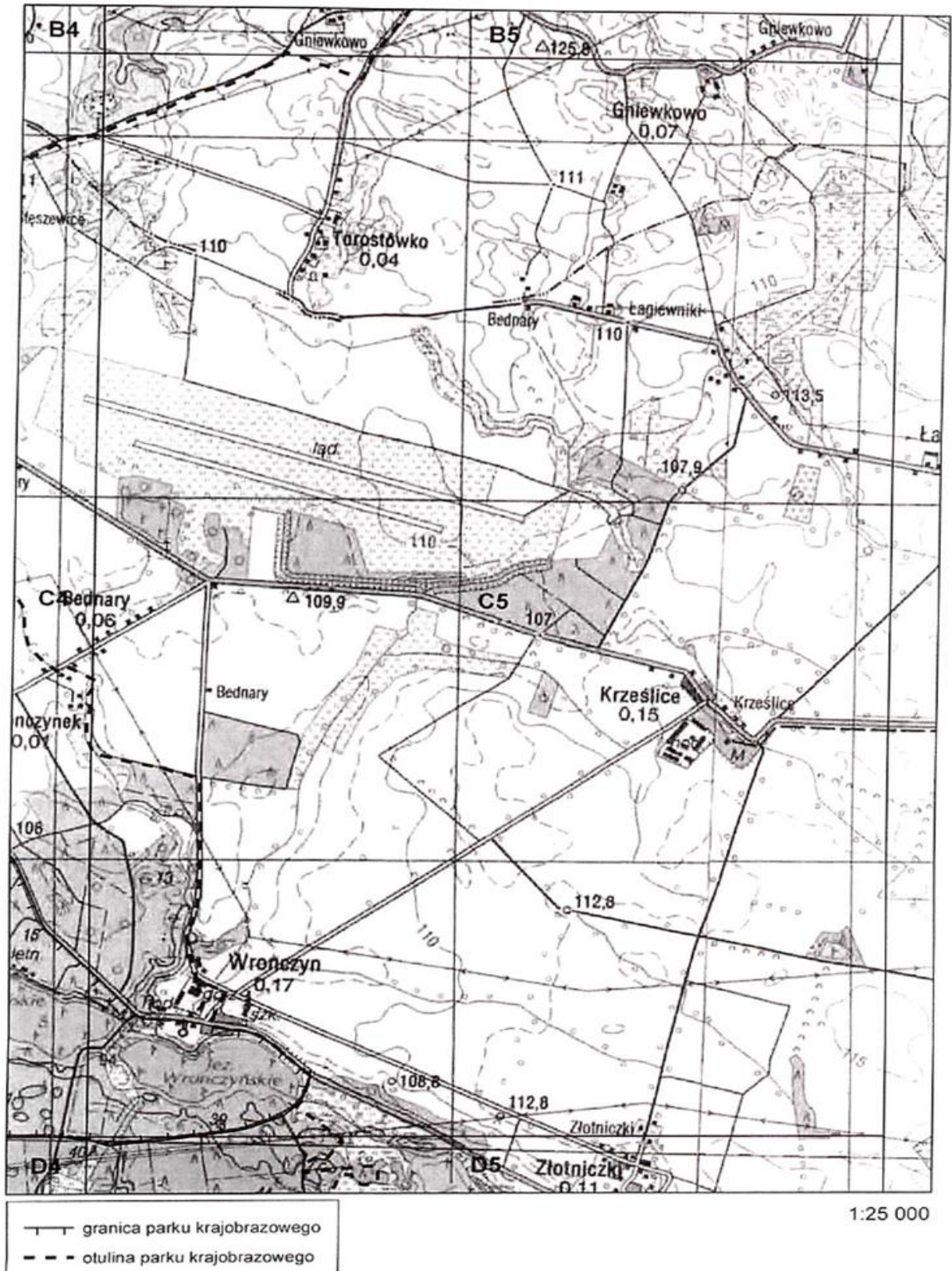
1:25 000

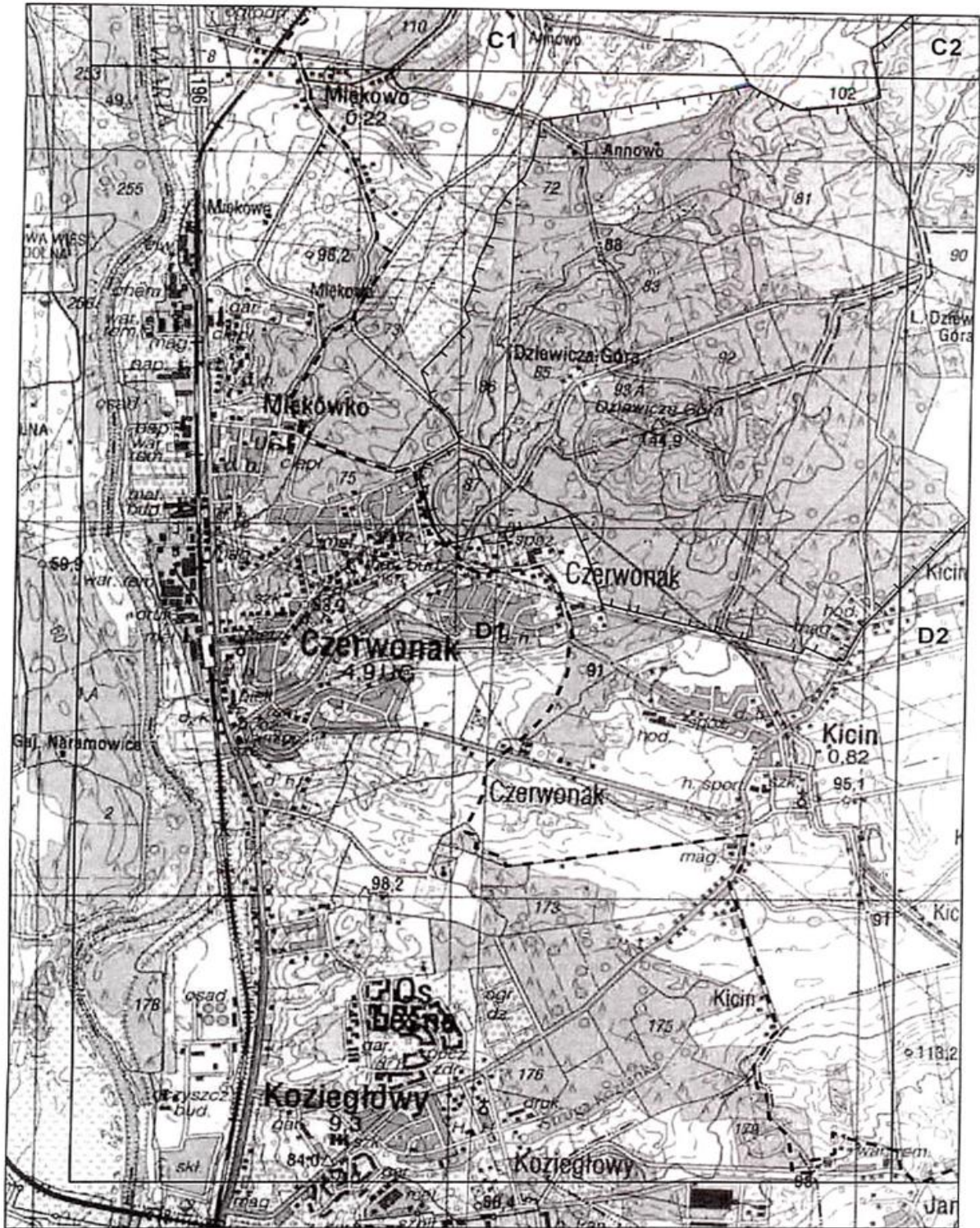




- granica parku krajobrazowego
- - - otulina parku krajobrazowego

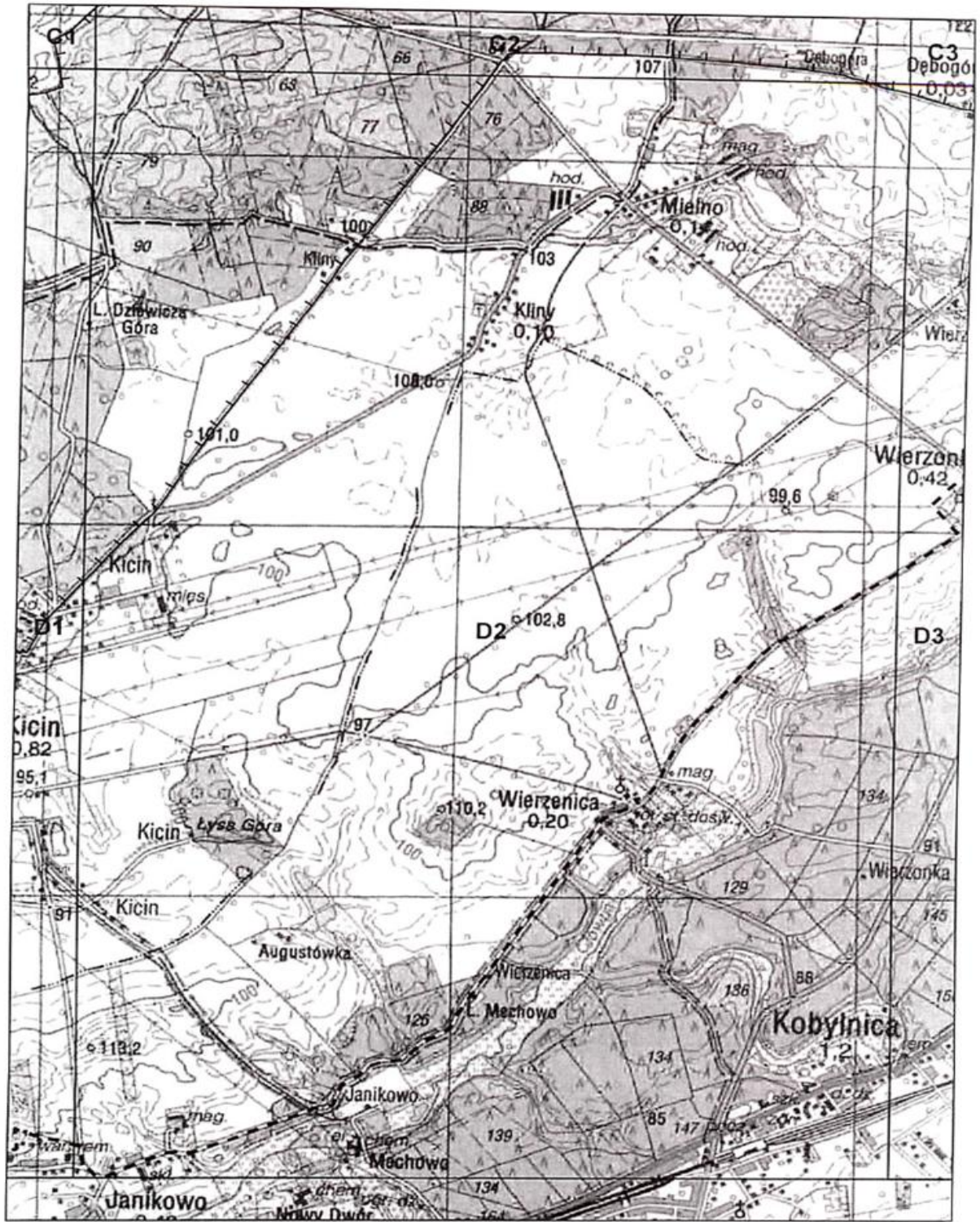
1:25 000





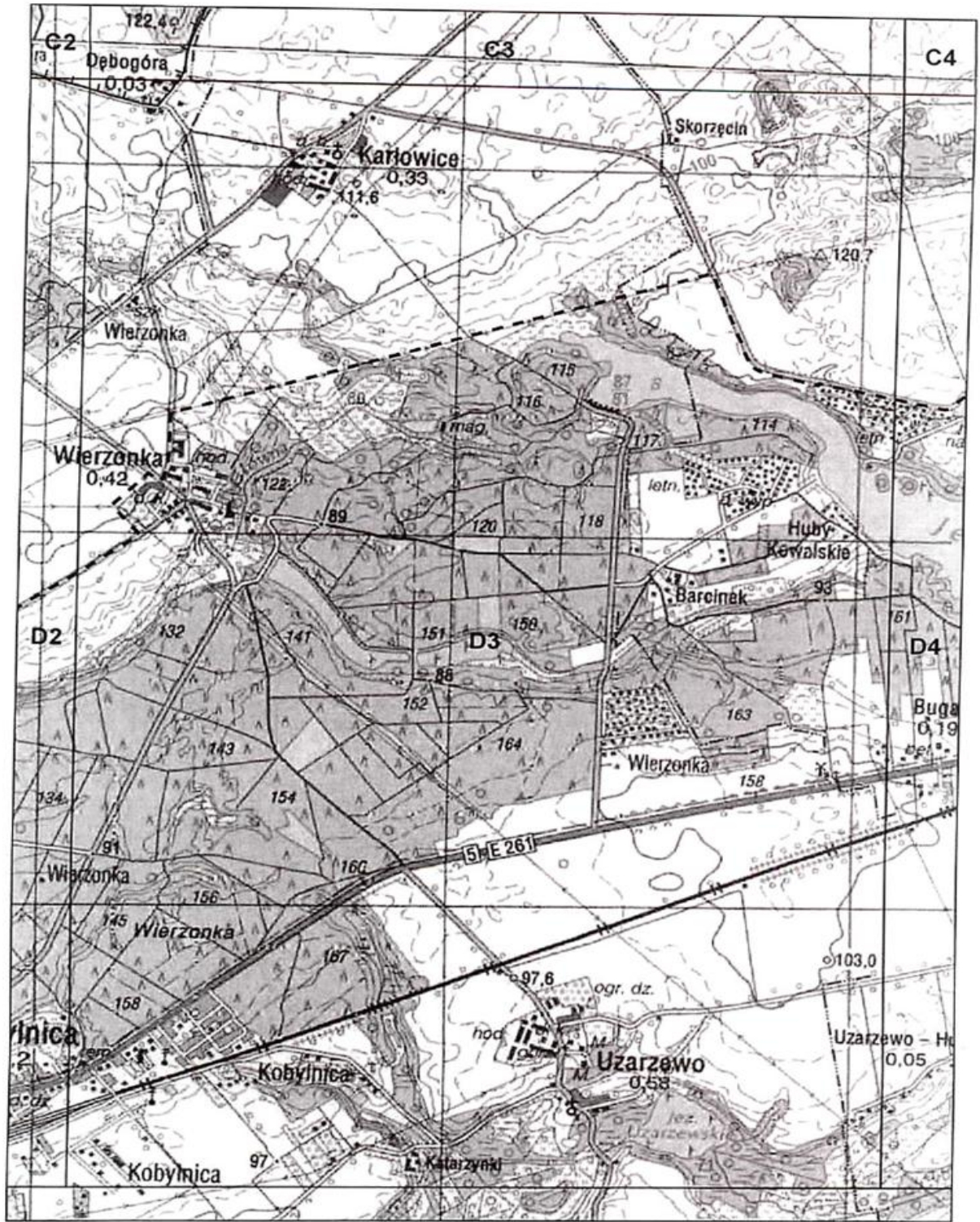
- granica parku krajobrazowego
- - - otulina parku krajobrazowego

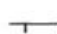

1:25 000



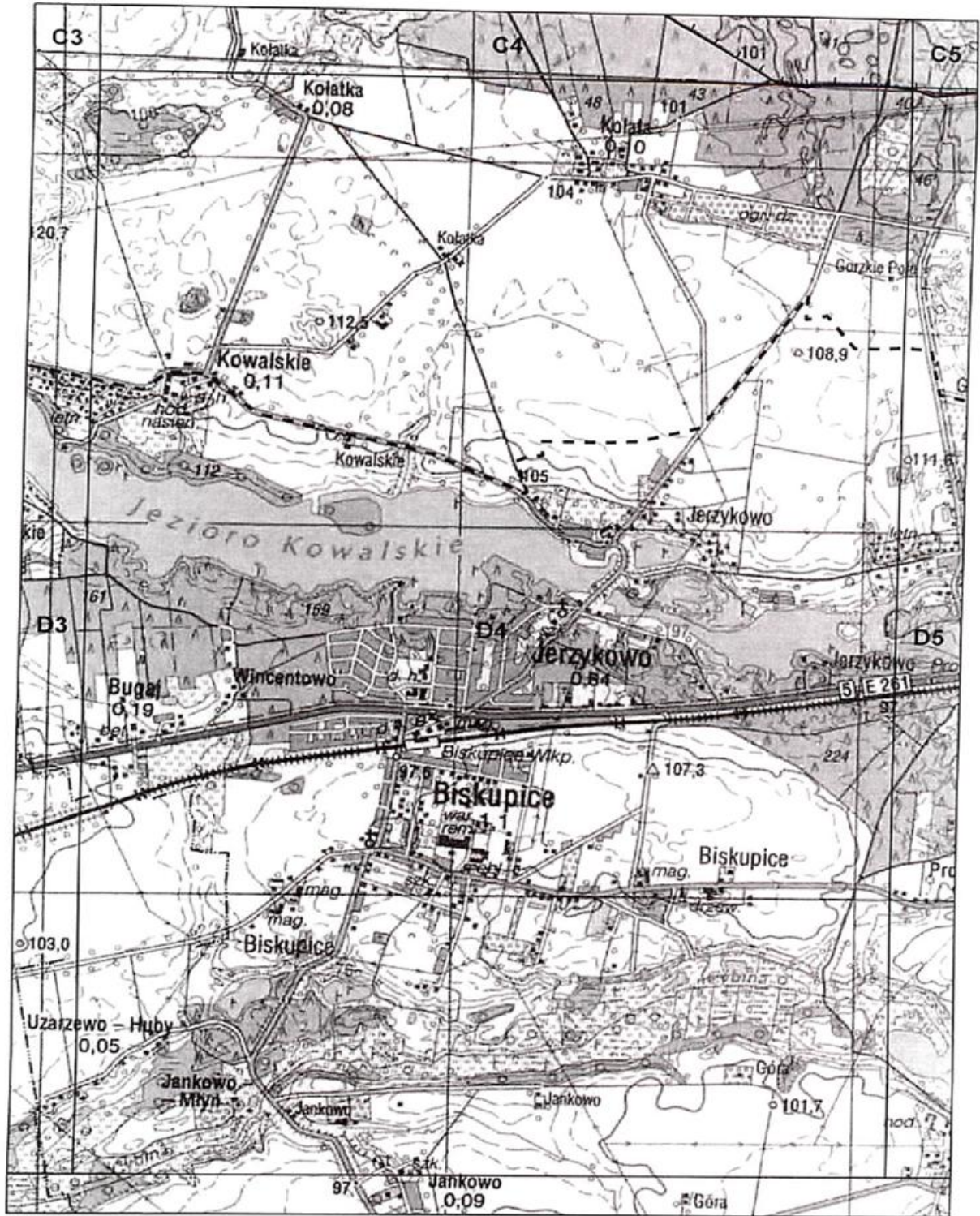
— granica parku krajobrazowego
- - - otulina parku krajobrazowego

1:25 000



-  granica parku krajobrazowego
-  otulina parku krajobrazowego

1:25 000



—|—| granica parku krajobrazowego
- - - otulina parku krajobrazowego

1:25 000



- granica parku krajobrazowego
- - - otulina parku krajobrazowego

1:25 000

Załącznik nr 2 do Uchwały Nr XXXVII/729/13
Sejmiku Województwa Wielkopolskiego
z dnia 30 września 2013 roku

Wykaz współrzędnych punktów załamania granicy
Parku Krajobrazowego Puszcza Zielonka
wykonany w układzie P UWG 1992

Numer punktu	Współrzędna X	Współrzędna Y
1	17.1316	52.6255
2	17.1313	52.6252
3	17.131	52.6251
4	17.1307	52.625
5	17.1306	52.6248
6	17.1302	52.6247
7	17.1299	52.6243
8	17.1296	52.6239
9	17.1295	52.6235
10	17.1298	52.6231
11	17.1298	52.623
12	17.1304	52.6229
13	17.1309	52.6225
14	17.1309	52.6221
15	17.13	52.6219
16	17.1301	52.6218
17	17.1302	52.6217
18	17.1313	52.6217
19	17.1313	52.6214
20	17.132	52.6211
21	17.1322	52.621
22	17.1324	52.6207
23	17.1325	52.6206
24	17.1325	52.6204
25	17.1326	52.6197
26	17.1324	52.6195
27	17.1321	52.6193
28	17.1321	52.6193
29	17.1309	52.6186
30	17.1304	52.618
31	17.1297	52.6171
32	17.1288	52.6167
33	17.1277	52.6161
34	17.1265	52.6159
35	17.1252	52.6158
36	17.1249	52.6156
37	17.1247	52.6154
38	17.1242	52.615
39	17.1242	52.615
40	17.1232	52.6142
41	17.1226	52.6137
42	17.1223	52.6133
43	17.1225	52.6129

44	17.1226	52.6128
45	17.1226	52.6126
46	17.1229	52.6123
47	17.123	52.6122
48	17.123	52.6121
49	17.1229	52.6118
50	17.1228	52.6116
51	17.1224	52.6115
52	17.1217	52.6113
53	17.1217	52.6111
54	17.1218	52.611
55	17.1218	52.6109
56	17.1219	52.6108
57	17.1232	52.6111
58	17.1243	52.6115
59	17.1255	52.6118
60	17.1256	52.6118
61	17.1258	52.6112
62	17.1258	52.6108
63	17.126	52.6098
64	17.1263	52.6091
65	17.1267	52.6075
66	17.1271	52.6075
67	17.1274	52.6069
68	17.1276	52.6066
69	17.1278	52.6054
70	17.1276	52.6049
71	17.1278	52.6046
72	17.1297	52.6049
73	17.13	52.6049
74	17.1314	52.6052
75	17.1328	52.6055
76	17.1329	52.6055
77	17.133	52.6055
78	17.1329	52.6062
79	17.1327	52.6076
80	17.1329	52.6082
81	17.1331	52.609
82	17.1333	52.6094
83	17.1336	52.61
84	17.1341	52.6114
85	17.1341	52.6114
86	17.1356	52.611

87	17.1367	52.6107
88	17.1377	52.6104
89	17.1377	52.6104
90	17.1367	52.6094
91	17.1373	52.6092
92	17.1362	52.6082
93	17.1375	52.6076
94	17.1388	52.6071
95	17.1407	52.6064
96	17.1411	52.6063
97	17.1419	52.6059
98	17.1435	52.6053
99	17.1444	52.6054
100	17.1458	52.6044
101	17.1463	52.604
102	17.1463	52.604
103	17.1465	52.6042
104	17.1472	52.6039
105	17.149	52.6032
106	17.1493	52.603
107	17.1486	52.6025
108	17.1488	52.6024
109	17.1488	52.6024
110	17.1491	52.6024
111	17.1498	52.6023
112	17.1513	52.6024
113	17.1514	52.6015
114	17.1514	52.6014
115	17.1514	52.6013
116	17.1514	52.6009
117	17.1514	52.6009
118	17.1529	52.6007
119	17.1537	52.6007
120	17.1539	52.6006
121	17.154	52.6004
122	17.1543	52.5999
123	17.1548	52.5996
124	17.1551	52.5994
125	17.1562	52.5985
126	17.1565	52.5983
127	17.1567	52.5982
128	17.1569	52.5981
129	17.157	52.598
130	17.1571	52.5979
131	17.1573	52.5979
132	17.1575	52.5978
133	17.1578	52.5977
134	17.158	52.5977
135	17.1587	52.5976
136	17.1594	52.5972
137	17.16	52.5968
138	17.1604	52.5964
139	17.1612	52.5957
140	17.1617	52.5953
141	17.1625	52.5946
142	17.1626	52.5945

143	17.1632	52.5939
144	17.1632	52.5938
145	17.164	52.594
146	17.1642	52.593
147	17.165	52.5913
148	17.1653	52.5909
149	17.166	52.5899
150	17.1661	52.5898
151	17.1663	52.5895
152	17.1673	52.5886
153	17.1675	52.5883
154	17.1679	52.5879
155	17.168	52.5879
156	17.168	52.5879
157	17.1695	52.5883
158	17.1711	52.5888
159	17.1715	52.5889
160	17.173	52.5893
161	17.1736	52.5895
162	17.1753	52.589
163	17.1754	52.5891
164	17.1758	52.5889
165	17.1768	52.5885
166	17.1771	52.5882
167	17.1786	52.587
168	17.1792	52.5867
169	17.1795	52.5867
170	17.1796	52.5867
171	17.1797	52.5867
172	17.18	52.5865
173	17.1802	52.5863
174	17.18	52.5855
175	17.18	52.5854
176	17.1821	52.5844
177	17.1827	52.5843
178	17.1826	52.5842
179	17.1871	52.5823
180	17.1845	52.5804
181	17.1827	52.5792
182	17.1823	52.5789
183	17.1812	52.5781
184	17.1808	52.5778
185	17.181	52.5778
186	17.1823	52.5775
187	17.1828	52.5775
188	17.1835	52.5768
189	17.184	52.5763
190	17.1843	52.576
191	17.1843	52.5758
192	17.1844	52.5758
193	17.1849	52.5759
194	17.1854	52.576
195	17.1853	52.5753
196	17.1851	52.5746
197	17.1849	52.5736
198	17.1849	52.5726

199	17.1849	52.572
200	17.1849	52.572
201	17.1849	52.572
202	17.1849	52.5714
203	17.185	52.5712
204	17.1851	52.5707
205	17.1851	52.5706
206	17.1851	52.5706
207	17.1855	52.5696
208	17.1857	52.5692
209	17.1862	52.5687
210	17.1864	52.5685
211	17.1873	52.5678
212	17.188	52.5672
213	17.1883	52.567
214	17.189	52.5661
215	17.1873	52.565
216	17.1873	52.565
217	17.1873	52.565
218	17.1873	52.5649
219	17.1869	52.5637
220	17.1868	52.5634
221	17.1867	52.5634
222	17.186	52.5623
223	17.186	52.5622
224	17.1855	52.5613
225	17.1847	52.5596
226	17.1851	52.5586
227	17.1851	52.5582
228	17.1852	52.5578
229	17.1853	52.5574
230	17.1853	52.5571
231	17.1854	52.5566
232	17.1854	52.5561
233	17.1854	52.556
234	17.1855	52.5556
235	17.1855	52.5555
236	17.1855	52.5553
237	17.1858	52.5544
238	17.186	52.5539
239	17.1863	52.553
240	17.1878	52.5527
241	17.1899	52.5524
242	17.1901	52.5524
243	17.1903	52.5521
244	17.1888	52.5503
245	17.1887	52.5502
246	17.1884	52.5499
247	17.1881	52.5497
248	17.1871	52.5491
249	17.1867	52.5488
250	17.1864	52.5481
251	17.1852	52.5463
252	17.185	52.546
253	17.1846	52.5454
254	17.1843	52.5446

255	17.184	52.5438
256	17.1838	52.5428
257	17.1834	52.5411
258	17.1834	52.5408
259	17.1834	52.5405
260	17.1834	52.5399
261	17.1835	52.5388
262	17.1836	52.5388
263	17.1847	52.5384
264	17.1841	52.5374
265	17.184	52.5373
266	17.184	52.5371
267	17.1838	52.537
268	17.1832	52.5359
269	17.1827	52.535
270	17.1824	52.5346
271	17.1817	52.5334
272	17.1809	52.5323
273	17.1804	52.5313
274	17.1802	52.5312
275	17.18	52.5311
276	17.1799	52.531
277	17.1796	52.5309
278	17.1791	52.5308
279	17.1786	52.5306
280	17.1783	52.5305
281	17.178	52.5304
282	17.1778	52.5304
283	17.1776	52.5303
284	17.1764	52.53
285	17.1753	52.5297
286	17.1743	52.5294
287	17.1735	52.5292
288	17.1722	52.5286
289	17.1721	52.5286
290	17.1712	52.5283
291	17.1699	52.5279
292	17.1685	52.5274
293	17.167	52.5269
294	17.1665	52.5267
295	17.1658	52.5263
296	17.1654	52.5261
297	17.1644	52.5256
298	17.1636	52.5252
299	17.1631	52.5251
300	17.161	52.5245
301	17.161	52.5245
302	17.1595	52.524
303	17.1585	52.5236
304	17.1578	52.523
305	17.1573	52.5227
306	17.1555	52.522
307	17.1551	52.5218
308	17.1549	52.5216
309	17.1545	52.5214
310	17.1544	52.5213

311	17.1538	52.521
312	17.1532	52.5208
313	17.1525	52.5205
314	17.1508	52.52
315	17.1498	52.5197
316	17.1489	52.5195
317	17.1494	52.5195
318	17.1492	52.5195
319	17.1489	52.5194
320	17.1492	52.5194
321	17.1494	52.5194
322	17.1496	52.5194
323	17.1498	52.5194
324	17.1505	52.5194
325	17.1506	52.5194
326	17.1519	52.5193
327	17.1544	52.5192
328	17.1549	52.5192
329	17.1556	52.5192
330	17.1566	52.5191
331	17.1588	52.519
332	17.1607	52.519
333	17.1614	52.519
334	17.1617	52.5191
335	17.1623	52.5193
336	17.1624	52.5193
337	17.1624	52.5193
338	17.1627	52.5194
339	17.163	52.5195
340	17.163	52.5195
341	17.1631	52.5195
342	17.1633	52.5195
343	17.1636	52.5196
344	17.1638	52.5197
345	17.164	52.5197
346	17.1641	52.5197
347	17.1643	52.5198
348	17.1644	52.5198
349	17.1646	52.5198
350	17.1649	52.5199
351	17.1649	52.5199
352	17.1651	52.52
353	17.1658	52.5201
354	17.1659	52.5201
355	17.1661	52.5202
356	17.1663	52.5202
357	17.1664	52.5202
358	17.1668	52.5203
359	17.1673	52.5204
360	17.1684	52.5203
361	17.1685	52.5203
362	17.1699	52.5203
363	17.17	52.5203
364	17.1706	52.5203
365	17.171	52.5203
366	17.1714	52.5204

367	17.1722	52.5206
368	17.1728	52.5207
369	17.173	52.5207
370	17.1731	52.5207
371	17.1738	52.5208
372	17.1752	52.5207
373	17.1753	52.5208
374	17.176	52.5208
375	17.1766	52.5207
376	17.177	52.5206
377	17.177	52.5205
378	17.1771	52.5205
379	17.1772	52.5205
380	17.1779	52.5202
381	17.1781	52.5201
382	17.1783	52.52
383	17.1785	52.5199
384	17.1787	52.5198
385	17.1802	52.5192
386	17.1818	52.5186
387	17.1823	52.5184
388	17.1842	52.518
389	17.1847	52.5179
390	17.1875	52.5173
391	17.1897	52.5167
392	17.1906	52.5165
393	17.1907	52.5165
394	17.192	52.5162
395	17.1927	52.516
396	17.194	52.5156
397	17.1945	52.5155
398	17.1952	52.5153
399	17.1954	52.5153
400	17.1957	52.5152
401	17.1957	52.5152
402	17.1973	52.5148
403	17.1978	52.5146
404	17.1982	52.5144
405	17.1985	52.5142
406	17.1988	52.5139
407	17.1995	52.5129
408	17.1997	52.5126
409	17.2007	52.5112
410	17.2009	52.511
411	17.2012	52.5107
412	17.2033	52.5094
413	17.2052	52.5083
414	17.2078	52.5067
415	17.2079	52.5066
416	17.208	52.5066
417	17.2082	52.5065
418	17.2084	52.5064
419	17.2088	52.5064
420	17.2095	52.5064
421	17.21	52.5064
422	17.2105	52.5064

423	17.2107	52.5064
424	17.2108	52.5064
425	17.211	52.5064
426	17.2115	52.5063
427	17.2117	52.5063
428	17.2121	52.5063
429	17.2122	52.5063
430	17.2125	52.5062
431	17.2127	52.5062
432	17.2131	52.5062
433	17.2137	52.5061
434	17.2138	52.5061
435	17.2142	52.5061
436	17.2148	52.506
437	17.2148	52.506
438	17.2151	52.506
439	17.2151	52.506
440	17.2154	52.506
441	17.216	52.5059
442	17.2167	52.5058
443	17.2172	52.5056
444	17.2177	52.5054
445	17.2183	52.5051
446	17.2188	52.5048
447	17.2189	52.5047
448	17.2207	52.5037
449	17.2207	52.5037
450	17.2208	52.5037
451	17.2206	52.5032
452	17.2204	52.5027
453	17.2203	52.5024
454	17.2202	52.5024
455	17.2201	52.5023
456	17.2201	52.5023
457	17.2201	52.5023
458	17.2199	52.5022
459	17.2198	52.5021
460	17.2189	52.5016
461	17.2166	52.501
462	17.2154	52.5007
463	17.2107	52.5003
464	17.2075	52.5
465	17.2075	52.5
466	17.2075	52.5
467	17.2062	52.4999
468	17.2049	52.5002
469	17.203	52.5003
470	17.203	52.5003
471	17.2006	52.5003
472	17.198	52.5002
473	17.198	52.5002
474	17.1977	52.5002
475	17.197	52.5001
476	17.1961	52.5001
477	17.1949	52.5002
478	17.1922	52.5012

479	17.1886	52.5025
480	17.1879	52.5027
481	17.1867	52.5031
482	17.1867	52.5031
483	17.1867	52.5031
484	17.1846	52.504
485	17.1824	52.5049
486	17.1823	52.5049
487	17.1822	52.5051
488	17.1821	52.5051
489	17.1821	52.5051
490	17.18	52.5059
491	17.1776	52.5065
492	17.1757	52.5069
493	17.174	52.5073
494	17.1731	52.5075
495	17.1717	52.5078
496	17.1711	52.508
497	17.1701	52.5083
498	17.1688	52.5084
499	17.1688	52.5084
500	17.1685	52.5084
501	17.1675	52.5083
502	17.1661	52.5085
503	17.1653	52.5085
504	17.1644	52.5083
505	17.1624	52.5079
506	17.1616	52.5078
507	17.1611	52.5078
508	17.1605	52.5078
509	17.16	52.5079
510	17.1594	52.508
511	17.1578	52.5085
512	17.1578	52.5084
513	17.1569	52.5085
514	17.1559	52.5086
515	17.1542	52.5088
516	17.154	52.5088
517	17.152	52.5093
518	17.152	52.5094
519	17.1514	52.5096
520	17.1433	52.5117
521	17.1433	52.5118
522	17.1433	52.5118
523	17.1431	52.5122
524	17.1428	52.5125
525	17.1421	52.513
526	17.1415	52.5134
527	17.1411	52.5136
528	17.1401	52.5141
529	17.139	52.5147
530	17.1368	52.5158
531	17.1366	52.5158
532	17.1365	52.5157
533	17.1363	52.5156
534	17.136	52.5155

535	17.136	52.5157
536	17.1353	52.5153
537	17.1346	52.515
538	17.1336	52.5147
539	17.1332	52.5146
540	17.133	52.5145
541	17.1326	52.5144
542	17.1323	52.5143
543	17.1322	52.5143
544	17.1319	52.5142
545	17.1319	52.5142
546	17.1314	52.5141
547	17.1309	52.514
548	17.1309	52.514
549	17.1308	52.5139
550	17.1305	52.5139
551	17.13	52.5137
552	17.1298	52.5137
553	17.1296	52.5136
554	17.1293	52.5136
555	17.1291	52.5135
556	17.129	52.5135
557	17.129	52.5135
558	17.1265	52.5127
559	17.1255	52.5121
560	17.1244	52.5115
561	17.1235	52.511
562	17.1232	52.5107
563	17.1228	52.5103
564	17.1224	52.5099
565	17.1218	52.5091
566	17.1207	52.5073
567	17.1199	52.5072
568	17.1192	52.5071
569	17.1182	52.5071
570	17.1161	52.5072
571	17.1143	52.5073
572	17.1135	52.5073
573	17.1135	52.5073
574	17.1123	52.5073
575	17.1116	52.5073
576	17.1108	52.5074
577	17.1094	52.5074
578	17.1088	52.5074
579	17.1084	52.5072
580	17.108	52.5071
581	17.1079	52.507
582	17.1078	52.5069
583	17.1075	52.5067
584	17.106	52.5053
585	17.1041	52.5052
586	17.1035	52.5052
587	17.1027	52.5052
588	17.102	52.5053
589	17.102	52.5055
590	17.0998	52.5058

591	17.0994	52.5058
592	17.0988	52.5059
593	17.0987	52.5059
594	17.0985	52.5056
595	17.0971	52.5048
596	17.097	52.5046
597	17.0968	52.5039
598	17.0966	52.5036
599	17.0961	52.5031
600	17.0957	52.5027
601	17.0953	52.5024
602	17.0949	52.502
603	17.0946	52.5016
604	17.0939	52.5005
605	17.0937	52.5001
606	17.0937	52.5
607	17.0935	52.4993
608	17.0935	52.4992
609	17.0935	52.499
610	17.0934	52.4989
611	17.0933	52.4987
612	17.0932	52.4986
613	17.0931	52.4985
614	17.093	52.4984
615	17.0929	52.4984
616	17.0929	52.4984
617	17.0928	52.4984
618	17.0929	52.4984
619	17.0928	52.4982
620	17.0927	52.4981
621	17.0924	52.4979
622	17.0924	52.4979
623	17.0923	52.4978
624	17.0921	52.4976
625	17.0918	52.4973
626	17.0917	52.4973
627	17.0915	52.4974
628	17.0913	52.4974
629	17.0907	52.4974
630	17.0905	52.4974
631	17.0903	52.4975
632	17.0902	52.4975
633	17.0874	52.4979
634	17.0863	52.4981
635	17.0856	52.4982
636	17.0841	52.4984
637	17.0837	52.4984
638	17.0834	52.4985
639	17.0831	52.4985
640	17.083	52.4986
641	17.0828	52.4986
642	17.082	52.4987
643	17.0815	52.4987
644	17.0807	52.4988
645	17.0799	52.4989
646	17.0796	52.4989

647	17.079	52.4989
648	17.0783	52.4989
649	17.0777	52.4989
650	17.077	52.499
651	17.0764	52.499
652	17.0752	52.4991
653	17.0751	52.4991
654	17.0749	52.4991
655	17.0719	52.4991
656	17.0692	52.4992
657	17.0691	52.4992
658	17.0663	52.4992
659	17.0631	52.4992
660	17.0607	52.4992
661	17.0581	52.4991
662	17.0577	52.4991
663	17.0572	52.4987
664	17.0571	52.4987
665	17.057	52.4985
666	17.0518	52.4936
667	17.0515	52.4934
668	17.0501	52.492
669	17.0489	52.4909
670	17.0482	52.4902
671	17.0476	52.4896
672	17.0475	52.4896
673	17.0464	52.4886
674	17.0456	52.4878
675	17.0451	52.4873
676	17.0448	52.4869
677	17.0444	52.4866
678	17.0441	52.4863
679	17.0438	52.4861
680	17.0436	52.4858
681	17.0431	52.4854
682	17.0426	52.4849
683	17.0425	52.4848
684	17.0424	52.4847
685	17.0419	52.4842
686	17.0413	52.4836
687	17.0412	52.4835
688	17.0407	52.4831
689	17.0402	52.4826
690	17.0399	52.4824
691	17.0397	52.4821
692	17.0394	52.4818
693	17.039	52.4814
694	17.0389	52.4814
695	17.0389	52.4813
696	17.0384	52.4809
697	17.0377	52.4802
698	17.0355	52.4779
699	17.0354	52.4778
700	17.0347	52.477
701	17.0341	52.4764
702	17.0339	52.4762

703	17.0337	52.4761
704	17.0322	52.4751
705	17.0309	52.4742
706	17.03	52.4735
707	17.0295	52.4731
708	17.0281	52.472
709	17.0271	52.4713
710	17.0264	52.4708
711	17.0264	52.4708
712	17.0262	52.4706
713	17.0261	52.4704
714	17.0261	52.4703
715	17.026	52.4703
716	17.0257	52.4698
717	17.0256	52.4697
718	17.0255	52.4695
719	17.0252	52.4692
720	17.025	52.4692
721	17.0251	52.4693
722	17.0249	52.4694
723	17.0248	52.4693
724	17.0248	52.4692
725	17.0247	52.4692
726	17.0247	52.4691
727	17.0245	52.4692
728	17.0239	52.4694
729	17.0225	52.4698
730	17.0224	52.4698
731	17.0222	52.4695
732	17.0222	52.4695
733	17.0222	52.4695
734	17.0213	52.4696
735	17.0193	52.4699
736	17.0164	52.4703
737	17.0164	52.4703
738	17.0162	52.4703
739	17.0162	52.4703
740	17.0162	52.4703
741	17.0084	52.4714
742	17.0076	52.4715
743	17.0075	52.4717
744	17.0074	52.4719
745	17.0074	52.4721
746	17.0068	52.4731
747	17.0064	52.4739
748	17.0058	52.4746
749	17.005	52.4756
750	17.0028	52.4752
751	17.0015	52.4749
752	17.001	52.4749
753	17.0003	52.4748
754	17.0004	52.4747
755	17.0006	52.4744
756	17	52.4743
757	16.9996	52.4742
758	16.9994	52.4742

759	16.9991	52.4742
760	16.9988	52.4742
761	16.9988	52.4742
762	16.9987	52.4744
763	16.9984	52.4745
764	16.998	52.4744
765	16.9977	52.4744
766	16.9976	52.4744
767	16.9967	52.4742
768	16.9962	52.4741
769	16.9953	52.4747
770	16.9947	52.4758
771	16.9944	52.4765
772	16.9941	52.477
773	16.994	52.4772
774	16.9943	52.4779
775	16.9943	52.4781
776	16.9955	52.4785
777	16.996	52.4787
778	16.9966	52.479
779	16.9967	52.4791
780	16.9968	52.4791
781	16.996	52.4801
782	16.9955	52.4804
783	16.9949	52.4807
784	16.9947	52.4809
785	16.9944	52.481
786	16.9945	52.4811
787	16.9937	52.4824
788	16.994	52.4826
789	16.9943	52.4828
790	16.9949	52.4832
791	16.9952	52.4835
792	16.9962	52.4843
793	16.997	52.4849
794	16.9967	52.4854
795	16.9966	52.4855
796	16.9969	52.4861
797	16.9973	52.4868
798	16.9971	52.4869
799	16.9971	52.487
800	16.9975	52.4879
801	16.998	52.4888
802	16.9984	52.4893
803	16.9984	52.4898
804	16.9984	52.4899
805	16.9985	52.4904
806	16.9989	52.4908
807	16.999	52.4909
808	16.9994	52.4913
809	17.0004	52.492
810	17.0009	52.4929
811	17.0012	52.4941
812	17.0013	52.4948
813	17.0015	52.4948
814	17.0044	52.4952

815	17.0071	52.4956
816	17.0089	52.4958
817	17.0119	52.4962
818	17.0133	52.4964
819	17.015	52.4967
820	17.0154	52.4968
821	17.0163	52.4969
822	17.0164	52.4969
823	17.017	52.4967
824	17.0172	52.4966
825	17.0181	52.4963
826	17.0185	52.4962
827	17.0191	52.496
828	17.0196	52.4958
829	17.0199	52.4958
830	17.0204	52.4958
831	17.0204	52.4958
832	17.0212	52.4959
833	17.0215	52.4959
834	17.022	52.496
835	17.0229	52.4961
836	17.0238	52.4962
837	17.0238	52.4962
838	17.0244	52.4962
839	17.0246	52.4963
840	17.0247	52.4963
841	17.0257	52.4966
842	17.0255	52.497
843	17.0254	52.4974
844	17.025	52.4986
845	17.025	52.4988
846	17.0261	52.4993
847	17.0268	52.4998
848	17.0272	52.5001
849	17.0282	52.5006
850	17.0292	52.5012
851	17.0289	52.5018
852	17.0284	52.5029
853	17.0283	52.503
854	17.0266	52.5033
855	17.0225	52.5039
856	17.0222	52.504
857	17.0207	52.5042
858	17.0184	52.5046
859	17.0157	52.505
860	17.0128	52.5054
861	17.01	52.5059
862	17.0087	52.5061
863	17.0066	52.5064
864	17.0039	52.5069
865	17.0016	52.5072
866	16.9974	52.5079
867	16.995	52.5082
868	16.9921	52.5087
869	16.991	52.5088
870	16.991	52.5088

871	16.9918	52.5089
872	16.9932	52.5087
873	16.9942	52.5094
874	16.9949	52.5101
875	16.9952	52.5101
876	16.9971	52.5102
877	16.9975	52.5102
878	16.999	52.5103
879	17.0016	52.5104
880	17.0041	52.5105
881	17.0066	52.5116
882	17.0073	52.5117
883	17.0083	52.5118
884	17.0084	52.512
885	17.0089	52.513
886	17.0095	52.5142
887	17.0095	52.5143
888	17.0097	52.5153
889	17.0099	52.5167
890	17.0097	52.5173
891	17.0077	52.5172
892	17.0053	52.517
893	17.0053	52.5172
894	17.0055	52.5172
895	17.006	52.5172
896	17.0071	52.5173
897	17.0079	52.5175
898	17.0087	52.5176
899	17.0091	52.5176
900	17.0094	52.5177
901	17.01	52.5177
902	17.0106	52.5178
903	17.0112	52.5178
904	17.0122	52.5179
905	17.0127	52.518
906	17.0127	52.518
907	17.0129	52.5181
908	17.0132	52.5181
909	17.0145	52.5183
910	17.0147	52.5183
911	17.0159	52.5185
912	17.0161	52.5185
913	17.0172	52.5187
914	17.0183	52.5189
915	17.0192	52.5191
916	17.0208	52.5196
917	17.0206	52.5198
918	17.0198	52.521
919	17.0209	52.5212
920	17.0223	52.5215
921	17.0235	52.5217
922	17.0245	52.5222
923	17.0254	52.5209
924	17.0259	52.5211
925	17.0265	52.5212
926	17.0279	52.5215

927	17.0285	52.5207
928	17.0286	52.5205
929	17.028	52.5204
930	17.0281	52.5201
931	17.0287	52.5202
932	17.0288	52.5196
933	17.0289	52.5194
934	17.0291	52.5194
935	17.0294	52.5197
936	17.0301	52.5199
937	17.0321	52.5206
938	17.0338	52.5213
939	17.0354	52.5219
940	17.0366	52.5223
941	17.0371	52.5226
942	17.0375	52.523
943	17.0381	52.5236
944	17.0385	52.5239
945	17.0388	52.5242
946	17.0391	52.5243
947	17.0391	52.5244
948	17.039	52.5245
949	17.0385	52.5259
950	17.0383	52.5263
951	17.0381	52.5263
952	17.0373	52.5261
953	17.0368	52.5259
954	17.0367	52.5259
955	17.0361	52.5258
956	17.0354	52.5256
957	17.0348	52.5255
958	17.0347	52.5255
959	17.0342	52.5253
960	17.0338	52.5252
961	17.0335	52.5251
962	17.0335	52.5251
963	17.0332	52.5251
964	17.0332	52.5251
965	17.0329	52.525
966	17.0328	52.525
967	17.0328	52.525
968	17.0327	52.525
969	17.0325	52.5253
970	17.0324	52.5254
971	17.0316	52.5263
972	17.031	52.5269
973	17.0305	52.5274
974	17.0305	52.5274
975	17.0302	52.5274
976	17.0299	52.5273
977	17.0295	52.5272
978	17.0289	52.5271
979	17.0277	52.5269
980	17.0265	52.5267
981	17.0252	52.5265
982	17.0241	52.5263

983	17.0234	52.5276
984	17.0229	52.5286
985	17.0224	52.5302
986	17.022	52.5309
987	17.0252	52.5315
988	17.0282	52.532
989	17.0307	52.5324
990	17.0323	52.5327
991	17.0323	52.5328
992	17.0319	52.5336
993	17.0309	52.5356
994	17.0298	52.5377
995	17.029	52.5393
996	17.0286	52.5403
997	17.0286	52.5403
998	17.0268	52.5399
999	17.0246	52.5396
1000	17.0244	52.5397
1001	17.0219	52.5409
1002	17.0198	52.5419
1003	17.0173	52.5414
1004	17.0171	52.5412
1005	17.0165	52.5413
1006	17.0141	52.5415
1007	17.0113	52.5417
1008	17.009	52.5418
1009	17.0084	52.5419
1010	17.008	52.5419
1011	17.0074	52.542
1012	17.0069	52.542
1013	17.0047	52.5422
1014	17.0041	52.5422
1015	17.0041	52.5422
1016	17.0039	52.5422
1017	17.0023	52.5419
1018	17.0013	52.5417
1019	17.0007	52.5415
1020	17.0003	52.5414
1021	17.0003	52.5415
1022	17.0003	52.5418
1023	17.0004	52.5421
1024	17.0001	52.5422
1025	17.0002	52.5424
1026	17.0003	52.5426
1027	17.0004	52.5429
1028	17.0005	52.5431
1029	17.0005	52.5433
1030	17.0007	52.5438
1031	17.0008	52.544
1032	17.0007	52.544
1033	17.0008	52.5441
1034	17.0008	52.5442
1035	17.0006	52.5442
1036	17.0008	52.5448
1037	17.0008	52.5457
1038	17.0008	52.5466

1039	17.0007	52.5478
1040	17.0007	52.5485
1041	17.0007	52.5491
1042	17.0007	52.5492
1043	17.0007	52.5492
1044	17.0007	52.5503
1045	17.0006	52.5521
1046	17.0006	52.5521
1047	17.0006	52.5526
1048	17.0006	52.5529
1049	17.0007	52.5531
1050	17.0011	52.5537
1051	17.0014	52.5542
1052	17.0018	52.5548
1053	17.0022	52.5555
1054	17.0027	52.5563
1055	17.0037	52.5578
1056	17.0043	52.5576
1057	17.005	52.5575
1058	17.007	52.5573
1059	17.0084	52.5571
1060	17.0094	52.5571
1061	17.0099	52.5571
1062	17.0104	52.5571
1063	17.0121	52.5573
1064	17.0142	52.5574
1065	17.0146	52.5573
1066	17.0151	52.557
1067	17.0155	52.5563
1068	17.0161	52.5558
1069	17.0173	52.5553
1070	17.0175	52.5552
1071	17.0182	52.5547
1072	17.0189	52.555
1073	17.0192	52.5551
1074	17.0192	52.5552
1075	17.0197	52.5549
1076	17.0203	52.5545
1077	17.0213	52.5541
1078	17.0215	52.5541
1079	17.0216	52.5547
1080	17.0217	52.5552
1081	17.0217	52.5553
1082	17.0218	52.5558
1083	17.0218	52.5559
1084	17.0218	52.5559
1085	17.022	52.5564
1086	17.022	52.5565
1087	17.0221	52.5565
1088	17.0222	52.5564
1089	17.0228	52.5563
1090	17.0238	52.5562
1091	17.0242	52.5561
1092	17.0244	52.556
1093	17.0245	52.5559
1094	17.0246	52.5558

1095	17.0247	52.5559
1096	17.0252	52.5571
1097	17.0257	52.557
1098	17.0257	52.557
1099	17.0256	52.5567
1100	17.0256	52.5566
1101	17.026	52.5558
1102	17.0264	52.5557
1103	17.0267	52.5557
1104	17.0281	52.5559
1105	17.0287	52.5561
1106	17.029	52.5563
1107	17.0291	52.5563
1108	17.0295	52.5563
1109	17.0296	52.5563
1110	17.0298	52.5563
1111	17.0304	52.5563
1112	17.0306	52.5564
1113	17.0307	52.5563
1114	17.0308	52.5563
1115	17.031	52.5563
1116	17.0311	52.5563
1117	17.0311	52.5563
1118	17.0311	52.5562
1119	17.0313	52.5562
1120	17.0315	52.5562
1121	17.0323	52.5559
1122	17.0334	52.5558
1123	17.0336	52.5558
1124	17.0337	52.5557
1125	17.0338	52.5557
1126	17.0341	52.5556
1127	17.0342	52.5555
1128	17.0345	52.5555
1129	17.0352	52.5555
1130	17.0356	52.5555
1131	17.0365	52.5553
1132	17.0372	52.5554
1133	17.0375	52.5554
1134	17.0375	52.5554
1135	17.0375	52.5559
1136	17.0375	52.5562
1137	17.0374	52.5564
1138	17.0373	52.5567
1139	17.0373	52.5568
1140	17.0377	52.5568
1141	17.0381	52.5567
1142	17.0383	52.5567
1143	17.0384	52.5566
1144	17.0393	52.5565
1145	17.0399	52.5564
1146	17.04	52.5564
1147	17.0432	52.5559
1148	17.0441	52.5557
1149	17.0442	52.5556
1150	17.0444	52.5555

1151	17.0451	52.5551
1152	17.0453	52.555
1153	17.0464	52.5544
1154	17.0467	52.5541
1155	17.0488	52.5533
1156	17.0542	52.5562
1157	17.0542	52.5563
1158	17.0546	52.5565
1159	17.055	52.5568
1160	17.0562	52.5577
1161	17.0567	52.5581
1162	17.0576	52.5587
1163	17.0578	52.5589
1164	17.058	52.5591
1165	17.0581	52.559
1166	17.0593	52.5588
1167	17.0596	52.5587
1168	17.0597	52.5588
1169	17.0606	52.5592
1170	17.0607	52.5593
1171	17.0607	52.5593
1172	17.0608	52.5594
1173	17.061	52.5595
1174	17.0611	52.5596
1175	17.0612	52.5596
1176	17.0614	52.5597
1177	17.0616	52.5599
1178	17.0619	52.56
1179	17.0621	52.5601
1180	17.0622	52.5601
1181	17.0618	52.5619
1182	17.0617	52.5627
1183	17.0617	52.563
1184	17.0616	52.5636
1185	17.0614	52.5647
1186	17.0613	52.5658
1187	17.0611	52.5662
1188	17.061	52.5668
1189	17.0632	52.5669
1190	17.0647	52.567
1191	17.0656	52.5671
1192	17.0656	52.5671
1193	17.0656	52.5675
1194	17.0657	52.5676
1195	17.0658	52.5677
1196	17.0663	52.5682
1197	17.0667	52.5684
1198	17.067	52.5686
1199	17.0671	52.5687
1200	17.0671	52.569
1201	17.0673	52.5691
1202	17.067	52.5696
1203	17.0669	52.5697
1204	17.0666	52.5698
1205	17.0662	52.57
1206	17.0658	52.5701

1207	17.0657	52.5702
1208	17.0655	52.5703
1209	17.0655	52.5703
1210	17.0651	52.5705
1211	17.0638	52.5714
1212	17.0638	52.5714
1213	17.0632	52.5719
1214	17.0623	52.5725
1215	17.0614	52.5732
1216	17.0606	52.5736
1217	17.0603	52.5737
1218	17.0604	52.5738
1219	17.0633	52.5743
1220	17.0658	52.5748
1221	17.0654	52.5752
1222	17.0658	52.5753
1223	17.065	52.5762
1224	17.0649	52.5762
1225	17.0651	52.5763
1226	17.0668	52.577
1227	17.0676	52.5774
1228	17.068	52.5774
1229	17.0692	52.5774
1230	17.069	52.5775
1231	17.0689	52.5775
1232	17.0685	52.5777
1233	17.0684	52.5778
1234	17.0699	52.5784
1235	17.0716	52.5791
1236	17.0727	52.5796
1237	17.074	52.5801
1238	17.0751	52.5809
1239	17.0762	52.5817
1240	17.0762	52.5817
1241	17.0762	52.5817
1242	17.0762	52.5819
1243	17.0762	52.582
1244	17.0761	52.5822
1245	17.0759	52.5824
1246	17.0756	52.5827
1247	17.0754	52.5828
1248	17.0753	52.5827
1249	17.0749	52.583
1250	17.0745	52.5832
1251	17.0744	52.5833
1252	17.0742	52.5833
1253	17.0741	52.5833
1254	17.0736	52.5833
1255	17.0734	52.5834
1256	17.0732	52.5834
1257	17.0732	52.5835
1258	17.0728	52.5836
1259	17.0723	52.5838
1260	17.0719	52.584
1261	17.0716	52.5841
1262	17.0712	52.5843

1263	17.0711	52.5843
1264	17.0708	52.5845
1265	17.0695	52.5857
1266	17.0693	52.5859
1267	17.0689	52.5861
1268	17.0678	52.5868
1269	17.067	52.5873
1270	17.0665	52.5876
1271	17.0663	52.5877
1272	17.066	52.5878
1273	17.0659	52.5878
1274	17.0657	52.5879
1275	17.0654	52.5879
1276	17.065	52.588
1277	17.0649	52.588
1278	17.0632	52.5886
1279	17.0616	52.5892
1280	17.0602	52.5897
1281	17.0601	52.5898
1282	17.0599	52.5899
1283	17.0597	52.59
1284	17.0596	52.5901
1285	17.0596	52.5904
1286	17.0596	52.5909
1287	17.0596	52.5911
1288	17.0596	52.5912
1289	17.0597	52.5913
1290	17.0598	52.5914
1291	17.0604	52.5919
1292	17.0605	52.5919
1293	17.0607	52.5922
1294	17.0609	52.5924
1295	17.0611	52.5926
1296	17.0611	52.5927
1297	17.0611	52.5928
1298	17.0611	52.5929
1299	17.0611	52.5931
1300	17.061	52.5932
1301	17.0609	52.5933
1302	17.0608	52.5935
1303	17.0607	52.5936
1304	17.0606	52.5936
1305	17.0603	52.5938
1306	17.0602	52.5939
1307	17.0597	52.5941
1308	17.0596	52.5942
1309	17.0593	52.5943
1310	17.0589	52.5945
1311	17.0586	52.5946
1312	17.0581	52.5949
1313	17.058	52.5949
1314	17.0579	52.595
1315	17.0577	52.5951
1316	17.0574	52.5952
1317	17.0572	52.5953
1318	17.0569	52.5956

1319	17.0565	52.5958
1320	17.0559	52.5962
1321	17.0555	52.5965
1322	17.0549	52.5968
1323	17.0547	52.5969
1324	17.0544	52.5972
1325	17.0543	52.5973
1326	17.0542	52.5974
1327	17.0542	52.5974
1328	17.0541	52.5975
1329	17.0538	52.5977
1330	17.0537	52.5977
1331	17.0535	52.5978
1332	17.0533	52.598
1333	17.0532	52.598
1334	17.0531	52.598
1335	17.0529	52.598
1336	17.0528	52.598
1337	17.0525	52.598
1338	17.0521	52.598
1339	17.0514	52.598
1340	17.0511	52.5981
1341	17.0509	52.5982
1342	17.0507	52.5983
1343	17.0502	52.5987
1344	17.0501	52.5988
1345	17.0499	52.599
1346	17.0498	52.5992
1347	17.0497	52.5994
1348	17.0495	52.5995
1349	17.0492	52.5997
1350	17.0487	52.5999
1351	17.0483	52.6001
1352	17.048	52.6004
1353	17.0475	52.6009
1354	17.0467	52.6016
1355	17.0458	52.6023
1356	17.0458	52.6024
1357	17.0453	52.6028
1358	17.045	52.6031
1359	17.0436	52.6043
1360	17.043	52.6048
1361	17.0427	52.605
1362	17.0429	52.6051
1363	17.0447	52.6055
1364	17.0462	52.6057
1365	17.0469	52.6059
1366	17.0481	52.6061
1367	17.0482	52.6061
1368	17.0489	52.6063
1369	17.0495	52.6064
1370	17.0503	52.6066
1371	17.0508	52.6067
1372	17.0511	52.6067
1373	17.0516	52.6068
1374	17.0523	52.6069

1375	17.0533	52.6071
1376	17.0538	52.6072
1377	17.0545	52.6073
1378	17.0549	52.6073
1379	17.0554	52.6073
1380	17.0558	52.6073
1381	17.0571	52.6073
1382	17.0582	52.6072
1383	17.0589	52.6072
1384	17.0593	52.6072
1385	17.06	52.6072
1386	17.0604	52.6071
1387	17.0607	52.6071
1388	17.0613	52.6071
1389	17.0626	52.607
1390	17.0637	52.607
1391	17.0641	52.607
1392	17.0648	52.607
1393	17.066	52.6069
1394	17.0671	52.6069
1395	17.0678	52.6068
1396	17.0679	52.6068
1397	17.0682	52.6068
1398	17.0688	52.6068
1399	17.0697	52.6068
1400	17.0704	52.6067
1401	17.0711	52.6067
1402	17.0717	52.6067
1403	17.0726	52.6066
1404	17.0732	52.6066
1405	17.0739	52.6066
1406	17.0748	52.6065
1407	17.0754	52.6065
1408	17.076	52.6065
1409	17.0762	52.6065
1410	17.0765	52.6065
1411	17.0769	52.6066
1412	17.0771	52.6067
1413	17.078	52.6071
1414	17.079	52.6074
1415	17.0797	52.6078
1416	17.0802	52.608
1417	17.0807	52.6077
1418	17.0811	52.6076
1419	17.0817	52.6076
1420	17.082	52.6075
1421	17.0827	52.6079
1422	17.0827	52.6079
1423	17.0837	52.6076
1424	17.0851	52.6073
1425	17.0874	52.6067
1426	17.0898	52.6062
1427	17.0916	52.6057
1428	17.0917	52.6057
1429	17.0919	52.6056
1430	17.0918	52.6061

1431	17.0916	52.6069
1432	17.0912	52.6088
1433	17.0909	52.6103
1434	17.0908	52.6106
1435	17.0906	52.6117
1436	17.0906	52.6117
1437	17.091	52.6119
1438	17.0912	52.612
1439	17.0913	52.612
1440	17.092	52.6122
1441	17.0931	52.6126
1442	17.0931	52.6126
1443	17.0932	52.6126
1444	17.0932	52.6127
1445	17.0937	52.6128
1446	17.0943	52.6131
1447	17.0945	52.6131
1448	17.0961	52.6137
1449	17.0978	52.6143
1450	17.098	52.6146
1451	17.0984	52.6147
1452	17.0991	52.615
1453	17.0993	52.6151
1454	17.1	52.6154
1455	17.1009	52.6158
1456	17.1017	52.616
1457	17.1029	52.6165
1458	17.1042	52.617
1459	17.1053	52.6174
1460	17.1054	52.6174
1461	17.1061	52.6176
1462	17.1068	52.6179
1463	17.1071	52.6179
1464	17.1073	52.618
1465	17.1076	52.6182
1466	17.1086	52.6185
1467	17.1088	52.6185
1468	17.109	52.6185
1469	17.1094	52.6186
1470	17.1098	52.6187
1471	17.11	52.6187
1472	17.1102	52.6187
1473	17.1133	52.616
1474	17.1134	52.616
1475	17.1149	52.6166
1476	17.1166	52.6172
1477	17.1174	52.6179
1478	17.1177	52.6181
1479	17.1193	52.6188
1480	17.1208	52.6194
1481	17.1207	52.6194
1482	17.1204	52.6197
1483	17.1203	52.6198
1484	17.1196	52.6203
1485	17.1185	52.6212
1486	17.1185	52.6213

1487	17.118	52.6217
1488	17.1182	52.6217
1489	17.1183	52.6219
1490	17.1195	52.6222
1491	17.1195	52.6222
1492	17.1207	52.6226
1493	17.1217	52.6229
1494	17.1225	52.6231
1495	17.1234	52.6233
1496	17.1248	52.6237
1497	17.1255	52.6239
1498	17.126	52.6241
1499	17.1264	52.6242
1500	17.1273	52.6244
1501	17.1283	52.6247
1502	17.1286	52.6248
1503	17.1285	52.6249
1504	17.1291	52.625
1505	17.1298	52.6252
1506	17.1303	52.6253
1507	17.1305	52.6253
1508	17.1308	52.6253
1509	17.1312	52.6255
1510	17.1314	52.6255
1511	17.1316	52.6255

Załącznik nr 3 do Uchwały Nr XXXVII/729/13
Sejmiku Województwa Wielkopolskiego
z dnia 30 września 2013 roku

Wykaz współrzędnych punktów załamania zewnętrznej granicy otuliny
Parku Krajobrazowego Puszcza Zielonka
wykonany w układzie PUWG 1992

Numer punktu	Współrzędna X	Współrzędna Y
1	17.132518	52.623422
2	17.132676	52.62232
3	17.132703	52.622125
4	17.132772	52.621671
5	17.132839	52.621216
6	17.132872	52.620997
7	17.132905	52.620777
8	17.132937	52.620558
9	17.133328	52.620466
10	17.133713	52.620376
11	17.134351	52.620226
12	17.13454	52.620182
13	17.134863	52.620106
14	17.135136	52.620042
15	17.135207	52.620025
16	17.135243	52.620006
17	17.136009	52.619818
18	17.137698	52.619402
19	17.1375	52.618891
20	17.137495	52.618873
21	17.137232	52.617888
22	17.137108	52.617211
23	17.136914	52.616222
24	17.136776	52.615599
25	17.136757	52.615527
26	17.13671	52.615346
27	17.136078	52.61462
28	17.136017	52.61455
29	17.135055	52.613459
30	17.134484	52.612343
31	17.133985	52.61154
32	17.134089	52.611512
33	17.134134	52.611419
34	17.135561	52.611002
35	17.136679	52.61068
36	17.137736	52.610363
37	17.137801	52.610378
38	17.138414	52.610172
39	17.139183	52.609899
40	17.143288	52.608202
41	17.1433	52.608197
42	17.143361	52.608171
43	17.14844	52.606053
44	17.149481	52.607005
45	17.150041	52.6075

46	17.150199	52.607645
47	17.149381	52.609798
48	17.149893	52.610287
49	17.150241	52.610621
50	17.150672	52.611103
51	17.151243	52.611582
52	17.150849	52.611832
53	17.155049	52.613871
54	17.156511	52.613161
55	17.157602	52.611922
56	17.158229	52.611541
57	17.158334	52.611478
58	17.158871	52.611153
59	17.160216	52.610384
60	17.160395	52.610327
61	17.161936	52.609832
62	17.162063	52.609856
63	17.163763	52.609155
64	17.165059	52.609724
65	17.165921	52.610103
66	17.166957	52.608081
67	17.170193	52.609004
68	17.172008	52.607727
69	17.172817	52.607236
70	17.17355	52.606958
71	17.175496	52.60631
72	17.175904	52.605296
73	17.176752	52.605023
74	17.177583	52.604757
75	17.179585	52.604235
76	17.180603	52.604035
77	17.182268	52.600545
78	17.182285	52.60051
79	17.183306	52.59837
80	17.183347	52.598284
81	17.18602	52.597542
82	17.18621	52.59743
83	17.186751	52.597364
84	17.187792	52.597133
85	17.189856	52.596671
86	17.190776	52.596333
87	17.191831	52.595915
88	17.193247	52.595383
89	17.194333	52.59498
90	17.195154	52.59469

90	17.195154	52.59469
91	17.196472	52.594343
92	17.196603	52.594289
93	17.197069	52.594152
94	17.198618	52.593691
95	17.198785	52.593676
96	17.19798	52.592759
97	17.200491	52.592082
98	17.203057	52.591384
99	17.204283	52.591094
100	17.20624	52.590557
101	17.209751	52.589658
102	17.212709	52.588944
103	17.21562	52.588195
104	17.217436	52.587709
105	17.220162	52.587022
106	17.220226	52.587002
107	17.220256	52.587263
108	17.22047	52.587585
109	17.220743	52.587698
110	17.220994	52.587894
111	17.221558	52.588219
112	17.221881	52.588285
113	17.22206	52.588393
114	17.222462	52.58854
115	17.222499	52.588525
116	17.223228	52.588244
117	17.226508	52.586853
118	17.228186	52.586148
119	17.23046	52.585193
120	17.232026	52.584529
121	17.232209	52.584453
122	17.232654	52.584274
123	17.232967	52.584147
124	17.233126	52.584083
125	17.233168	52.584064
126	17.233288	52.583982
127	17.233439	52.58388
128	17.233657	52.583735
129	17.233902	52.58357
130	17.234082	52.583446
131	17.234715	52.583024
132	17.234959	52.582859
133	17.235057	52.582786
134	17.235126	52.582728
135	17.235162	52.582683
136	17.235291	52.582488
137	17.235467	52.582177
138	17.235539	52.582027
139	17.235743	52.58153
140	17.23578	52.581427
141	17.235832	52.581323
142	17.23598	52.581074
143	17.236233	52.580637
144	17.23649	52.580192
145	17.236621	52.579969

146	17.236708	52.579765
147	17.236953	52.579213
148	17.237016	52.57906
149	17.237038	52.579011
150	17.237142	52.578898
151	17.237257	52.578782
152	17.237641	52.578398
153	17.237668	52.578365
154	17.237674	52.578278
155	17.23816	52.577899
156	17.238233	52.577729
157	17.238214	52.577519
158	17.237934	52.576788
159	17.237724	52.576254
160	17.237407	52.575418
161	17.237117	52.574648
162	17.236741	52.573621
163	17.236401	52.572671
164	17.236146	52.571972
165	17.235847	52.571177
166	17.235385	52.569989
167	17.234975	52.568886
168	17.234614	52.567976
169	17.23453	52.567841
170	17.234265	52.567175
171	17.234056	52.566753
172	17.233779	52.566395
173	17.233681	52.566267
174	17.233612	52.566229
175	17.233401	52.566096
176	17.233433	52.566066
177	17.233325	52.565669
178	17.23331	52.565612
179	17.233179	52.565196
180	17.233152	52.565122
181	17.233133	52.565056
182	17.233111	52.564941
183	17.23302	52.564846
184	17.23184	52.563574
185	17.23095	52.562621
186	17.229326	52.560845
187	17.228465	52.560024
188	17.227933	52.559597
189	17.227906	52.559569
190	17.227142	52.55894
191	17.226353	52.558274
192	17.225603	52.557601
193	17.224657	52.556775
194	17.224574	52.556698
195	17.223238	52.555513
196	17.223178	52.555458
197	17.222794	52.55512
198	17.222136	52.554539
199	17.222077	52.55448
200	17.222033	52.554428
201	17.222005	52.554367

202	17.221842	52.554069
203	17.221786	52.553956
204	17.221732	52.553875
205	17.22163	52.553743
206	17.221388	52.553429
207	17.218589	52.553994
208	17.217666	52.554184
209	17.216815	52.554355
210	17.216003	52.554497
211	17.215796	52.554543
212	17.215733	52.554565
213	17.215367	52.554341
214	17.215198	52.554251
215	17.214623	52.553991
216	17.21456	52.553965
217	17.213205	52.55348
218	17.21222	52.553134
219	17.21138	52.552891
220	17.211041	52.552807
221	17.210946	52.552783
222	17.209931	52.552581
223	17.209819	52.55256
224	17.209305	52.5524
225	17.20862	52.552176
226	17.208529	52.552149
227	17.208345	52.552117
228	17.20828	52.552104
229	17.208225	52.552085
230	17.207446	52.551778
231	17.207387	52.551759
232	17.206997	52.551639
233	17.204709	52.551065
234	17.204171	52.550918
235	17.203335	52.550667
236	17.203221	52.550635
237	17.202467	52.550361
238	17.20212	52.55025
239	17.201829	52.550191
240	17.201396	52.550149
241	17.201127	52.550138
242	17.200798	52.550087
243	17.200316	52.550014
244	17.19958	52.549884
245	17.199562	52.549868
246	17.199568	52.549866
247	17.199466	52.54981
248	17.198217	52.549328
249	17.197201	52.548966
250	17.196424	52.548625
251	17.19624	52.548522
252	17.196035	52.548412
253	17.195635	52.548177
254	17.194797	52.547156
255	17.19402	52.546202
256	17.19326	52.545226
257	17.192509	52.544287

258	17.191718	52.543355
259	17.190227	52.541521
260	17.190167	52.541446
261	17.190107	52.541364
262	17.187231	52.537838
263	17.187332	52.537712
264	17.187398	52.537332
265	17.187418	52.537212
266	17.18747	52.536918
267	17.188563	52.536625
268	17.190894	52.536004
269	17.191908	52.535734
270	17.192525	52.53557
271	17.192706	52.535566
272	17.193006	52.535562
273	17.193284	52.535492
274	17.193565	52.535433
275	17.193836	52.535344
276	17.194108	52.535256
277	17.1944	52.535161
278	17.194291	52.535034
279	17.194407	52.534989
280	17.19387	52.534514
281	17.193701	52.534305
282	17.193714	52.534009
283	17.193793	52.533774
284	17.1938	52.533652
285	17.193827	52.533277
286	17.193872	52.532756
287	17.193871	52.53271
288	17.193861	52.532239
289	17.19388	52.531561
290	17.193892	52.530481
291	17.193917	52.529776
292	17.193949	52.52899
293	17.19397	52.528473
294	17.195095	52.528194
295	17.196882	52.527568
296	17.197801	52.5272
297	17.197973	52.527084
298	17.198289	52.526826
299	17.198438	52.526591
300	17.198495	52.526218
301	17.198569	52.525778
302	17.198667	52.525423
303	17.198777	52.525103
304	17.19896	52.524766
305	17.199939	52.524138
306	17.201085	52.523613
307	17.201154	52.523577
308	17.201791	52.523866
309	17.203999	52.523158
310	17.204076	52.523062
311	17.203656	52.522696
312	17.203438	52.522433
313	17.203591	52.522141

314	17.203589	52.521856
315	17.203613	52.521732
316	17.203595	52.52155
317	17.203475	52.520992
318	17.203483	52.520783
319	17.203499	52.52047
320	17.203515	52.520301
321	17.204009	52.519475
322	17.204055	52.519468
323	17.204553	52.519396
324	17.205307	52.519287
325	17.207556	52.519016
326	17.20832	52.518939
327	17.209314	52.518813
328	17.211842	52.518396
329	17.2119	52.518239
330	17.211967	52.517181
331	17.212067	52.516105
332	17.212068	52.515292
333	17.212161	52.513918
334	17.212106	52.512794
335	17.21196	52.511825
336	17.211621	52.511181
337	17.211324	52.51065
338	17.211435	52.510272
339	17.211438	52.510213
340	17.211479	52.509852
341	17.21213	52.50863
342	17.212062	52.50855
343	17.212196	52.508488
344	17.213112	52.508214
345	17.214309	52.507848
346	17.214306	52.507796
347	17.213639	52.507021
348	17.213504	52.506596
349	17.21334	52.506307
350	17.213287	52.506161
351	17.213451	52.506142
352	17.213669	52.506116
353	17.213751	52.506107
354	17.214222	52.506059
355	17.214759	52.506001
356	17.214814	52.505998
357	17.215109	52.505971
358	17.215129	52.505971
359	17.215383	52.505971
360	17.216	52.505925
361	17.216699	52.505789
362	17.217241	52.505602
363	17.217689	52.505406
364	17.218258	52.505095
365	17.218826	52.504824
366	17.218877	52.504707
367	17.220679	52.50374
368	17.220733	52.503715
369	17.220844	52.503661

370	17.220603	52.503154
371	17.220419	52.502713
372	17.220256	52.502446
373	17.2202	52.502366
374	17.220119	52.502292
375	17.220073	52.502268
376	17.220052	52.502252
377	17.219926	52.502166
378	17.21981	52.502109
379	17.219918	52.502061
380	17.221578	52.501285
381	17.223332	52.500472
382	17.222672	52.499797
383	17.22229	52.499434
384	17.221685	52.498546
385	17.220606	52.499174
386	17.220576	52.498706
387	17.221239	52.498762
388	17.222467	52.498863
389	17.223014	52.498909
390	17.223155	52.498928
391	17.223886	52.498982
392	17.223906	52.498983
393	17.225095	52.499082
394	17.225346	52.499096
395	17.226033	52.499147
396	17.2261	52.498531
397	17.226075	52.498326
398	17.225493	52.498155
399	17.225067	52.498125
400	17.224707	52.498208
401	17.224425	52.498293
402	17.224296	52.498332
403	17.224176	52.498641
404	17.223746	52.498658
405	17.223569	52.498666
406	17.223121	52.498419
407	17.222978	52.498077
408	17.222739	52.497894
409	17.222645	52.497708
410	17.222586	52.497563
411	17.222593	52.497392
412	17.223121	52.497456
413	17.223414	52.497463
414	17.223538	52.497442
415	17.223666	52.497421
416	17.223983	52.497292
417	17.224154	52.497167
418	17.224214	52.497123
419	17.224475	52.496759
420	17.224568	52.496736
421	17.224552	52.496668
422	17.224585	52.496629
423	17.224774	52.496569
424	17.224885	52.496534
425	17.225326	52.496225

426	17.225811	52.495592
427	17.22603	52.495478
428	17.229068	52.495037
429	17.229304	52.494996
430	17.230202	52.494841
431	17.230557	52.494779
432	17.230576	52.494775
433	17.230772	52.494731
434	17.231009	52.494678
435	17.231065	52.494665
436	17.231302	52.494612
437	17.231351	52.494599
438	17.231824	52.494469
439	17.232028	52.494373
440	17.232245	52.494219
441	17.232356	52.494125
442	17.23241	52.49408
443	17.232986	52.493597
444	17.233094	52.49351
445	17.233188	52.493419
446	17.233341	52.493428
447	17.233704	52.493288
448	17.234068	52.493111
449	17.234324	52.492986
450	17.234537	52.492876
451	17.234547	52.492875
452	17.234753	52.492811
453	17.235108	52.492701
454	17.235436	52.492599
455	17.235712	52.492513
456	17.235763	52.492494
457	17.236077	52.492377
458	17.236169	52.492343
459	17.236476	52.492235
460	17.236737	52.49209
461	17.236998	52.491944
462	17.237178	52.491845
463	17.237254	52.491795
464	17.237499	52.491639
465	17.237518	52.491627
466	17.237692	52.491652
467	17.238068	52.491556
468	17.238266	52.491505
469	17.238539	52.491435
470	17.238744	52.491473
471	17.23875	52.491356
472	17.239455	52.491306
473	17.240081	52.491237
474	17.241975	52.491041
475	17.242197	52.491018
476	17.243703	52.490863
477	17.244092	52.490823
478	17.244878	52.490742
479	17.245039	52.490726
480	17.245315	52.490698
481	17.245583	52.490671

482	17.245852	52.490644
483	17.246969	52.490141
484	17.247719	52.489809
485	17.248797	52.489333
486	17.250719	52.48848
487	17.250948	52.488369
488	17.25118	52.48826
489	17.251688	52.488021
490	17.252456	52.487706
491	17.252562	52.487638
492	17.252664	52.487533
493	17.252714	52.487425
494	17.25271	52.487373
495	17.252707	52.487339
496	17.25266	52.487218
497	17.252602	52.487066
498	17.252566	52.48697
499	17.252545	52.486915
500	17.25249	52.486704
501	17.252488	52.486585
502	17.252512	52.486539
503	17.252563	52.486364
504	17.252386	52.486201
505	17.25225	52.486096
506	17.252085	52.48597
507	17.25188	52.485814
508	17.251853	52.485793
509	17.251717	52.485664
510	17.25147	52.485428
511	17.251198	52.48517
512	17.250725	52.484861
513	17.250014	52.484555
514	17.249667	52.484482
515	17.248995	52.484298
516	17.248647	52.484211
517	17.248606	52.484201
518	17.248446	52.484161
519	17.248405	52.484151
520	17.248147	52.484087
521	17.247395	52.483936
522	17.247059	52.483832
523	17.246423	52.483566
524	17.246001	52.483372
525	17.245209	52.482876
526	17.24469	52.482471
527	17.244037	52.48218
528	17.243549	52.481931
529	17.242866	52.48146
530	17.242159	52.481092
531	17.241731	52.480782
532	17.241308	52.480589
533	17.240247	52.480213
534	17.24002	52.480178
535	17.239984	52.480077
536	17.240012	52.479929
537	17.23996	52.479731

538	17.23995	52.479707
539	17.239923	52.479642
540	17.239904	52.479546
541	17.239864	52.479221
542	17.239845	52.47914
543	17.239692	52.47913
544	17.239535	52.479144
545	17.239337	52.47927
546	17.239168	52.479261
547	17.239071	52.479257
548	17.238881	52.479129
549	17.238758	52.479067
550	17.238632	52.479039
551	17.238557	52.479045
552	17.238423	52.479091
553	17.238355	52.479163
554	17.238218	52.479207
555	17.238061	52.479243
556	17.237754	52.479286
557	17.237565	52.479312
558	17.237461	52.479302
559	17.237337	52.479281
560	17.236975	52.479278
561	17.236839	52.479248
562	17.236615	52.479342
563	17.236433	52.4794
564	17.23627	52.479451
565	17.236015	52.479549
566	17.235824	52.479609
567	17.235735	52.479612
568	17.235683	52.479568
569	17.235588	52.479532
570	17.235526	52.479526
571	17.235415	52.479561
572	17.23512	52.479473
573	17.23505	52.479412
574	17.234956	52.479374
575	17.234909	52.479242
576	17.234773	52.479138
577	17.234755	52.478995
578	17.234778	52.478891
579	17.234765	52.478817
580	17.234767	52.47874
581	17.2347	52.47868
582	17.234685	52.478615
583	17.23453	52.478507
584	17.23439	52.478386
585	17.234299	52.478375
586	17.234218	52.478386
587	17.234092	52.478428
588	17.233779	52.478382
589	17.233749	52.478352
590	17.233852	52.478284
591	17.233854	52.478234
592	17.233666	52.478107
593	17.233758	52.478054

594	17.233778	52.47786
595	17.233638	52.477699
596	17.23358	52.477633
597	17.233564	52.477481
598	17.233453	52.477413
599	17.233296	52.477365
600	17.233235	52.477336
601	17.2331	52.477341
602	17.233018	52.477348
603	17.232937	52.477348
604	17.232881	52.477377
605	17.232811	52.477424
606	17.232747	52.477408
607	17.232726	52.477393
608	17.232689	52.477412
609	17.232628	52.477445
610	17.232478	52.477737
611	17.232142	52.477836
612	17.231414	52.477938
613	17.230475	52.478179
614	17.230392	52.478193
615	17.229833	52.478224
616	17.2297	52.478265
617	17.229321	52.478416
618	17.228978	52.478679
619	17.227918	52.479391
620	17.227558	52.479843
621	17.227635	52.479856
622	17.227411	52.480212
623	17.227198	52.480329
624	17.226873	52.480387
625	17.22657	52.480441
626	17.225992	52.480333
627	17.225947	52.481119
628	17.225884	52.481845
629	17.225828	52.482494
630	17.225766	52.482425
631	17.225682	52.48245
632	17.225166	52.482454
633	17.224797	52.482471
634	17.224636	52.482485
635	17.22382	52.482653
636	17.222725	52.482909
637	17.222454	52.48298
638	17.221885	52.483093
639	17.22176	52.483132
640	17.221729	52.483141
641	17.221665	52.483159
642	17.221596	52.48318
643	17.221496	52.483194
644	17.220413	52.483356
645	17.219502	52.483512
646	17.219026	52.483614
647	17.218347	52.483798
648	17.217522	52.484004
649	17.217541	52.483925

650	17.216766	52.484067
651	17.215971	52.484206
652	17.215257	52.484298
653	17.215207	52.484305
654	17.213233	52.484561
655	17.212032	52.484718
656	17.21024	52.484929
657	17.207979	52.485207
658	17.207154	52.487392
659	17.204975	52.487425
660	17.20302	52.487329
661	17.201606	52.487308
662	17.199473	52.48887
663	17.197958	52.488648
664	17.198018	52.489845
665	17.194983	52.486875
666	17.190763	52.48314
667	17.186236	52.482363
668	17.186204	52.482361
669	17.185499	52.482327
670	17.183824	52.482246
671	17.180336	52.482202
672	17.179795	52.482193
673	17.179266	52.482183
674	17.179191	52.482182
675	17.179338	52.481511
676	17.178828	52.481463
677	17.178318	52.481414
678	17.177974	52.48133
679	17.177421	52.481195
680	17.177559	52.480982
681	17.177695	52.480771
682	17.177804	52.480603
683	17.17793	52.48041
684	17.178093	52.480158
685	17.178225	52.479954
686	17.178225	52.479857
687	17.178274	52.479777
688	17.178338	52.479667
689	17.178168	52.47962
690	17.178085	52.479615
691	17.177539	52.479759
692	17.175955	52.480175
693	17.175863	52.4802
694	17.174234	52.480629
695	17.172637	52.481033
696	17.17253	52.481053
697	17.172053	52.481186
698	17.171655	52.4813
699	17.171302	52.481373
700	17.17024	52.481506
701	17.17015	52.481521
702	17.169905	52.481559
703	17.169392	52.481693
704	17.169359	52.481691
705	17.169389	52.481627

706	17.166118	52.482027
707	17.165017	52.48217
708	17.164964	52.482177
709	17.163937	52.482309
710	17.162926	52.482429
711	17.162781	52.482447
712	17.162709	52.482455
713	17.162398	52.482493
714	17.162015	52.482538
715	17.161621	52.482585
716	17.15954	52.482854
717	17.158452	52.482983
718	17.157291	52.483508
719	17.156087	52.484103
720	17.155463	52.484418
721	17.155116	52.484594
722	17.15489	52.484673
723	17.154832	52.484701
724	17.154665	52.484782
725	17.154491	52.484847
726	17.154479	52.484818
727	17.153624	52.484856
728	17.152893	52.484882
729	17.151707	52.484854
730	17.15164	52.484841
731	17.151613	52.484753
732	17.150264	52.484023
733	17.150032	52.483963
734	17.14647	52.484379
735	17.143701	52.484702
736	17.140865	52.485031
737	17.140793	52.485042
738	17.140763	52.484935
739	17.138682	52.485207
740	17.136915	52.485438
741	17.136728	52.485462
742	17.136326	52.485564
743	17.136072	52.485649
744	17.13602	52.485585
745	17.135872	52.485742
746	17.135538	52.486082
747	17.135322	52.486364
748	17.134966	52.486903
749	17.134574	52.487461
750	17.133942	52.488326
751	17.133425	52.489037
752	17.133115	52.489471
753	17.132682	52.490189
754	17.093973	52.48244
755	17.093889	52.482434
756	17.093902	52.481962
757	17.093908	52.481458
758	17.093917	52.480539
759	17.093914	52.480089
760	17.0939	52.479847
761	17.093871	52.479711

762	17.093643	52.479332
763	17.093464	52.479167
764	17.093305	52.479085
765	17.093231	52.479122
766	17.092878	52.479291
767	17.092769	52.479345
768	17.092541	52.479452
769	17.090059	52.477847
770	17.092156	52.476464
771	17.092164	52.476459
772	17.092026	52.476399
773	17.090675	52.47581
774	17.088427	52.47479
775	17.087855	52.474539
776	17.085098	52.473401
777	17.082009	52.472043
778	17.081389	52.471782
779	17.080757	52.471507
780	17.079655	52.471018
781	17.079587	52.471003
782	17.078874	52.470659
783	17.077744	52.469897
784	17.077328	52.469594
785	17.07666	52.469055
786	17.074592	52.467411
787	17.073771	52.466811
788	17.073461	52.466522
789	17.07292	52.466016
790	17.072284	52.465327
791	17.071879	52.46478
792	17.071611	52.464364
793	17.071549	52.464232
794	17.07144	52.463931
795	17.070836	52.463388
796	17.070601	52.463164
797	17.070198	52.463057
798	17.070162	52.463051
799	17.069697	52.462977
800	17.06991	52.462816
801	17.069791	52.462781
802	17.069429	52.462634
803	17.06882	52.462433
804	17.068544	52.462342
805	17.068206	52.462233
806	17.067807	52.462115
807	17.067613	52.462057
808	17.067466	52.461985
809	17.067337	52.461922
810	17.067193	52.461799
811	17.067084	52.461706
812	17.066916	52.461563
813	17.066585	52.461236
814	17.06624	52.460896
815	17.064845	52.459519
816	17.064258	52.458948
817	17.062477	52.457213

818	17.061509	52.456274
819	17.060334	52.455133
820	17.05939	52.454207
821	17.05789	52.452728
822	17.057419	52.452271
823	17.057055	52.451779
824	17.056784	52.451483
825	17.056309	52.451263
826	17.055104	52.450898
827	17.054737	52.450718
828	17.054019	52.450259
829	17.053677	52.45007
830	17.053269	52.449909
831	17.052748	52.449847
832	17.052231	52.44981
833	17.051874	52.449743
834	17.051383	52.449634
835	17.050988	52.449505
836	17.050866	52.449447
837	17.050365	52.44907
838	17.050206	52.448978
839	17.049893	52.448846
840	17.049376	52.448701
841	17.049182	52.448566
842	17.048929	52.448235
843	17.048646	52.447611
844	17.048513	52.447528
845	17.048321	52.447468
846	17.047199	52.447333
847	17.047027	52.447268
848	17.046906	52.447215
849	17.045843	52.446939
850	17.044495	52.446589
851	17.043457	52.446291
852	17.041509	52.445739
853	17.040751	52.445539
854	17.040419	52.445443
855	17.039557	52.445224
856	17.038952	52.445064
857	17.038812	52.445028
858	17.038758	52.445014
859	17.03824	52.444882
860	17.03786	52.444906
861	17.037502	52.444986
862	17.037142	52.444961
863	17.037039	52.444954
864	17.036897	52.444944
865	17.036857	52.444934
866	17.036744	52.444907
867	17.036674	52.444889
868	17.036338	52.444798
869	17.036002	52.444707
870	17.035666	52.444616
871	17.035318	52.444522
872	17.034827	52.444369
873	17.034522	52.444275

874	17.03404	52.444125
875	17.033992	52.44411
876	17.0334	52.443923
877	17.032868	52.443743
878	17.032818	52.443701
879	17.032601	52.443664
880	17.032221	52.443604
881	17.032079	52.443619
882	17.032021	52.443626
883	17.031527	52.443948
884	17.031361	52.444048
885	17.031279	52.444101
886	17.031269	52.444107
887	17.031135	52.444215
888	17.031047	52.444102
889	17.030965	52.444327
890	17.030881	52.444557
891	17.030843	52.444663
892	17.030833	52.444689
893	17.03083	52.444698
894	17.030749	52.444915
895	17.030668	52.445131
896	17.030654	52.445171
897	17.027625	52.445638
898	17.027521	52.445667
899	17.027443	52.445687
900	17.027451	52.445647
901	17.025962	52.445976
902	17.02603	52.445682
903	17.026059	52.445548
904	17.026091	52.445402
905	17.026093	52.445393
906	17.026173	52.44504
907	17.026186	52.444979
908	17.025873	52.444877
909	17.025429	52.444745
910	17.025112	52.444651
911	17.024558	52.444603
912	17.024493	52.444421
913	17.024493	52.444419
914	17.024526	52.444149
915	17.024545	52.443997
916	17.024505	52.443968
917	17.024182	52.443953
918	17.024087	52.443948
919	17.023903	52.44394
920	17.023742	52.443932
921	17.023242	52.443908
922	17.023152	52.444307
923	17.023014	52.444911
924	17.022872	52.445542
925	17.022822	52.445765
926	17.021385	52.44661
927	17.021297	52.446966
928	17.02102	52.448095
929	17.020432	52.448095

930	17.020076	52.449222
931	17.020177	52.449337
932	17.02056	52.449806
933	17.020933	52.450281
934	17.021258	52.450695
935	17.021441	52.450856
936	17.021802	52.451045
937	17.021738	52.451134
938	17.021463	52.451633
939	17.020985	52.452498
940	17.020934	52.452592
941	17.020163	52.453995
942	17.020056	52.454182
943	17.019954	52.454368
944	17.019848	52.454548
945	17.019458	52.455209
946	17.0193	52.455473
947	17.019283	52.455513
948	17.019133	52.455759
949	17.019007	52.455964
950	17.018715	52.456485
951	17.018643	52.456613
952	17.018593	52.456695
953	17.017807	52.458108
954	17.018121	52.458338
955	17.018183	52.45837
956	17.018487	52.4587
957	17.018644	52.458937
958	17.018722	52.459195
959	17.018745	52.459337
960	17.018784	52.459582
961	17.018793	52.459828
962	17.018798	52.45986
963	17.018851	52.460227
964	17.018856	52.460255
965	17.01889	52.46044
966	17.018697	52.460438
967	17.018551	52.460423
968	17.018399	52.460407
969	17.015893	52.460117
970	17.012721	52.45975
971	17.00923	52.459363
972	17.006422	52.459053
973	17.003435	52.458722
974	17.001669	52.458557
975	17.001521	52.458973
976	16.999368	52.459407
977	16.999515	52.459996
978	16.998579	52.460182
979	16.998726	52.460538
980	16.998682	52.460549
981	16.999214	52.461274
982	16.999514	52.461634
983	16.999617	52.461812
984	16.999735	52.462082
985	16.999763	52.462452

986	16.999838	52.462971
987	16.999842	52.462999
988	16.999839	52.463006
989	16.999806	52.463113
990	16.999856	52.463151
991	16.999958	52.463406
992	17.000044	52.463505
993	17.000358	52.463721
994	17.000741	52.463893
995	17.000878	52.463956
996	17.000995	52.46401
997	17.001083	52.464076
998	17.001527	52.464329
999	17.001832	52.464501
1000	17.002045	52.464622
1001	17.002269	52.464749
1002	17.002472	52.464863
1003	17.003491	52.46565
1004	17.004224	52.46635
1005	17.004573	52.466816
1006	17.004766	52.467139
1007	17.004817	52.467223
1008	17.004944	52.467434
1009	17.005129	52.467732
1010	17.005291	52.467939
1011	17.005321	52.467978
1012	17.005385	52.468114
1013	17.00543	52.468296
1014	17.005432	52.468313
1015	17.005456	52.468493
1016	17.005448	52.468637
1017	17.005374	52.468954
1018	17.005423	52.469227
1019	17.005434	52.469385
1020	17.005437	52.469434
1021	17.005441	52.469492
1022	17.005444	52.469528
1023	17.005459	52.469753
1024	17.005531	52.469809
1025	17.005553	52.469826
1026	17.005586	52.469852
1027	17.00567	52.469859
1028	17.005649	52.469911
1029	17.005561	52.470105
1030	17.005536	52.470199
1031	17.005473	52.470431
1032	17.005398	52.470714
1033	17.005387	52.470758
1034	17.005385	52.470768
1035	17.005118	52.471158
1036	17.005072	52.471224
1037	17.004255	52.472414
1038	17.003095	52.47321
1039	17.002956	52.473181
1040	17.002527	52.47309
1041	17.001792	52.47299

1042	17.001428	52.472961
1043	17.001267	52.47295
1044	17.000816	52.47292
1045	17.000465	52.472896
1046	17.0002	52.472887
1047	17.000007	52.47288
1048	16.999573	52.472865
1049	16.999056	52.472836
1050	16.998447	52.472826
1051	16.998141	52.472876
1052	16.997872	52.472957
1053	16.99753	52.47313
1054	16.997382	52.473278
1055	16.99722	52.473385
1056	16.996788	52.473795
1057	16.996665	52.473873
1058	16.996163	52.474013
1059	16.996139	52.474041
1060	16.996132	52.474044
1061	16.99594	52.474004
1062	16.99549	52.474363
1063	16.995008	52.47457
1064	16.994926	52.474575
1065	16.994886	52.474528
1066	16.9947	52.475002
1067	16.994499	52.475509
1068	16.994431	52.475683
1069	16.994363	52.475857
1070	16.994156	52.476356
1071	16.994139	52.476398
1072	16.994102	52.476476
1073	16.993995	52.476673
1074	16.993997	52.476673
1075	16.993978	52.476708
1076	16.993892	52.476874
1077	16.993813	52.477028
1078	16.993646	52.477355
1079	16.99361	52.477426
1080	16.993547	52.477536
1081	16.993482	52.477623
1082	16.993395	52.477723
1083	16.992516	52.477525
1084	16.992082	52.477465
1085	16.991933	52.477472
1086	16.989386	52.478046
1087	16.987773	52.478407
1088	16.985676	52.478886
1089	16.985814	52.478901
1090	16.985923	52.479249
1091	16.98594	52.479478
1092	16.985679	52.479504
1093	16.985143	52.479552
1094	16.9853	52.479783
1095	16.985369	52.479885
1096	16.98417	52.480588
1097	16.984388	52.480769

1098	16.984643	52.481049
1099	16.985051	52.481493
1100	16.985298	52.481786
1101	16.985459	52.481959
1102	16.985792	52.482327
1103	16.98606	52.482641
1104	16.986316	52.482909
1105	16.986474	52.483097
1106	16.986546	52.483182
1107	16.986589	52.483284
1108	16.986591	52.483394
1109	16.986579	52.483491
1110	16.986538	52.483615
1111	16.986999	52.48405
1112	16.987519	52.484271
1113	16.988616	52.484742
1114	16.988586	52.484745
1115	16.988723	52.485084
1116	16.98914	52.485584
1117	16.989474	52.485994
1118	16.989806	52.486388
1119	16.990146	52.486794
1120	16.990432	52.487121
1121	16.991247	52.487991
1122	16.991208	52.488006
1123	16.990782	52.488178
1124	16.989935	52.488519
1125	16.989941	52.48857
1126	16.989975	52.488749
1127	16.989958	52.488912
1128	16.989442	52.490078
1129	16.989334	52.490325
1130	16.98929	52.49044
1131	16.989246	52.490506
1132	16.989229	52.49053
1133	16.989173	52.490614
1134	16.989006	52.490864
1135	16.988905	52.491013
1136	16.988805	52.491163
1137	16.988782	52.491196
1138	16.988567	52.491512
1139	16.988457	52.491693
1140	16.988351	52.491865
1141	16.98828	52.491993
1142	16.988256	52.492035
1143	16.988161	52.492205
1144	16.988062	52.492374
1145	16.988038	52.492417
1146	16.98773	52.492822
1147	16.987496	52.493143
1148	16.987359	52.493255
1149	16.98722	52.493345
1150	16.987136	52.493421
1151	16.98624	52.494
1152	16.986211	52.49402
1153	16.985775	52.494317

1154	16.985516	52.494496
1155	16.98513	52.494761
1156	16.985004	52.494848
1157	16.98482	52.495069
1158	16.984781	52.495115
1159	16.984696	52.495287
1160	16.984648	52.495412
1161	16.984614	52.49559
1162	16.984605	52.495699
1163	16.984594	52.495775
1164	16.984596	52.495794
1165	16.984576	52.495966
1166	16.984293	52.496313
1167	16.984212	52.496411
1168	16.984081	52.496634
1169	16.983892	52.497093
1170	16.98378	52.497304
1171	16.983792	52.497353
1172	16.983805	52.497403
1173	16.983369	52.497429
1174	16.983151	52.497451
1175	16.982933	52.497473
1176	16.982712	52.497483
1177	16.982492	52.497496
1178	16.982237	52.497538
1179	16.982885	52.498132
1180	16.983367	52.498621
1181	16.983544	52.498725
1182	16.983665	52.498829
1183	16.984038	52.498922
1184	16.984944	52.499789
1185	16.984879	52.499958
1186	16.985325	52.500369
1187	16.985677	52.500794
1188	16.986161	52.50127
1189	16.986483	52.501338
1190	16.987199	52.50202
1191	16.987819	52.50261
1192	16.988295	52.503087
1193	16.988699	52.503592
1194	16.988974	52.504044
1195	16.989117	52.504333
1196	16.989313	52.504883
1197	16.989412	52.505339
1198	16.98944	52.505657
1199	16.989431	52.506034
1200	16.989372	52.506412
1201	16.98924	52.506918
1202	16.989179	52.507063
1203	16.989341	52.506948
1204	16.989273	52.507071
1205	16.989242	52.507126
1206	16.989166	52.507236
1207	16.989079	52.507266
1208	16.988896	52.507317
1209	16.988742	52.507311

1210	16.988565	52.507307
1211	16.983867	52.508136
1212	16.983928	52.508286
1213	16.983981	52.508473
1214	16.984061	52.508972
1215	16.98403	52.509221
1216	16.983915	52.509218
1217	16.983778	52.509213
1218	16.981648	52.509217
1219	16.981454	52.509217
1220	16.980954	52.509218
1221	16.979756	52.509271
1222	16.979394	52.509038
1223	16.977881	52.509022
1224	16.977436	52.509036
1225	16.977122	52.509228
1226	16.976351	52.509702
1227	16.97621	52.509789
1228	16.976096	52.509858
1229	16.975868	52.509875
1230	16.975801	52.509205
1231	16.97572	52.508754
1232	16.975679	52.508688
1233	16.975596	52.508412
1234	16.975551	52.508262
1235	16.975375	52.507841
1236	16.975342	52.507763
1237	16.974975	52.507755
1238	16.974828	52.507752
1239	16.974401	52.507742
1240	16.974253	52.507739
1241	16.973916	52.507694
1242	16.97362	52.507682
1243	16.973371	52.507728
1244	16.973255	52.507796
1245	16.971921	52.508602
1246	16.971877	52.508818
1247	16.971876	52.508881
1248	16.971875	52.508944
1249	16.971877	52.509213
1250	16.971907	52.50929
1251	16.971945	52.509388
1252	16.971962	52.509424
1253	16.97197	52.509441
1254	16.971896	52.509451
1255	16.971015	52.509517
1256	16.970997	52.509551
1257	16.970882	52.509943
1258	16.970814	52.510415
1259	16.970825	52.510502
1260	16.97077	52.510605
1261	16.970583	52.510951
1262	16.970515	52.511071
1263	16.970443	52.511215
1264	16.970372	52.511384
1265	16.969787	52.512148

1266	16.969461	52.512652
1267	16.969066	52.513378
1268	16.968818	52.514012
1269	16.968573	52.514279
1270	16.968885	52.514328
1271	16.969264	52.514887
1272	16.969165	52.515077
1273	16.969013	52.515203
1274	16.968977	52.515322
1275	16.969186	52.515607
1276	16.96902	52.515855
1277	16.969066	52.516196
1278	16.968528	52.516757
1279	16.968367	52.517115
1280	16.968037	52.517594
1281	16.968588	52.517741
1282	16.969084	52.517516
1283	16.969616	52.516866
1284	16.970162	52.516609
1285	16.970854	52.516735
1286	16.971287	52.516892
1287	16.971469	52.51706
1288	16.971605	52.517019
1289	16.971917	52.516982
1290	16.972006	52.516977
1291	16.973143	52.5169
1292	16.973307	52.51688
1293	16.973837	52.516814
1294	16.97401	52.516794
1295	16.974266	52.516775
1296	16.974202	52.516575
1297	16.974191	52.516481
1298	16.974341	52.516308
1299	16.97463	52.516468
1300	16.974653	52.516475
1301	16.974734	52.516486
1302	16.974749	52.516488
1303	16.974776	52.516496
1304	16.974898	52.516518
1305	16.975207	52.516558
1306	16.975499	52.516592
1307	16.978882	52.516998
1308	16.978221	52.518019
1309	16.979256	52.519221
1310	16.980576	52.519436
1311	16.981559	52.519612
1312	16.98225	52.51977
1313	16.982852	52.519953
1314	16.983559	52.520205
1315	16.984926	52.52058
1316	16.984664	52.521735
1317	16.984515	52.522175
1318	16.98438	52.522716
1319	16.984215	52.523214
1320	16.984715	52.523762
1321	16.984931	52.524072

1322	16.985082	52.524723
1323	16.987435	52.53016
1324	16.993021	52.543978
1325	16.993023	52.543992
1326	16.994579	52.543414
1327	16.994617	52.543396
1328	16.994642	52.543573
1329	16.99466	52.543793
1330	16.994701	52.544085
1331	16.994725	52.544319
1332	16.994733	52.544569
1333	16.994775	52.545068
1334	16.994852	52.54597
1335	16.994924	52.546814
1336	16.994972	52.5476
1337	16.995041	52.548419
1338	16.995044	52.548676
1339	16.995372	52.549481
1340	16.99539	52.549523
1341	16.995428	52.549618
1342	16.99566	52.550184
1343	16.996665	52.552647
1344	16.996796	52.553458
1345	17.002591	52.558187
1346	17.002704	52.558138
1347	17.002812	52.558104
1348	17.003282	52.557944
1349	17.003493	52.557877
1350	17.003654	52.557804
1351	17.004306	52.557625
1352	17.004988	52.557487
1353	17.007017	52.5573
1354	17.008442	52.557085
1355	17.009383	52.557059
1356	17.009882	52.557096
1357	17.010447	52.557148
1358	17.012133	52.557287
1359	17.014228	52.557428
1360	17.014635	52.55732
1361	17.015096	52.557028
1362	17.015538	52.556297
1363	17.01608	52.555839
1364	17.017264	52.555253
1365	17.017495	52.555163
1366	17.01824	52.554661
1367	17.01891	52.554983
1368	17.0192	52.555135
1369	17.019235	52.555154
1370	17.019705	52.554867
1371	17.020253	52.554529
1372	17.021301	52.554115
1373	17.02152	52.554141
1374	17.02159	52.554655
1375	17.021669	52.555071
1376	17.021699	52.55523
1377	17.021705	52.555265

1378	17.021705	52.555265
1379	17.021733	52.555409
1380	17.02176	52.555555
1381	17.021788	52.555699
1382	17.021804	52.555788
1383	17.021814	52.555836
1384	17.021819	52.555866
1385	17.021823	52.555883
1386	17.021823	52.555883
1387	17.021869	52.556008
1388	17.021938	52.556186
1389	17.021959	52.556241
1390	17.022017	52.556389
1391	17.022008	52.556541
1392	17.021878	52.556646
1393	17.021595	52.55706
1394	17.02139	52.557547
1395	17.021331	52.557932
1396	17.021349	52.558272
1397	17.021512	52.55875
1398	17.022013	52.559414
1399	17.022107	52.55974
1400	17.022071	52.560458
1401	17.021842	52.560416
1402	17.021754	52.56037
1403	17.021607	52.560272
1404	17.021587	52.560172
1405	17.021419	52.560163
1406	17.02112	52.560129
1407	17.020998	52.56017
1408	17.020899	52.560155
1409	17.020587	52.560295
1410	17.020443	52.560467
1411	17.020445	52.56062
1412	17.020224	52.560886
1413	17.020001	52.561051
1414	17.019613	52.561169
1415	17.019623	52.561204
1416	17.019796	52.56179
1417	17.019978	52.561894
1418	17.020241	52.562447
1419	17.020336	52.562624
1420	17.019738	52.562773
1421	17.018759	52.563021
1422	17.017349	52.563378
1423	17.017719	52.563906
1424	17.018003	52.564509
1425	17.018488	52.565645
1426	17.018532	52.565861
1427	17.018642	52.566188
1428	17.018743	52.566521
1429	17.018804	52.56673
1430	17.018874	52.566968
1431	17.019068	52.566866
1432	17.019223	52.566785
1433	17.019261	52.566789

1434	17.019921	52.566856
1435	17.01993	52.566874
1436	17.020557	52.566861
1437	17.02081	52.5668
1438	17.020926	52.566745
1439	17.022771	52.56589
1440	17.022818	52.565888
1441	17.022985	52.565909
1442	17.02302	52.565918
1443	17.023081	52.565966
1444	17.023201	52.566047
1445	17.023283	52.566121
1446	17.023413	52.566261
1447	17.023497	52.566284
1448	17.023999	52.566363
1449	17.024519	52.56648
1450	17.024578	52.566491
1451	17.024811	52.56651
1452	17.024907	52.566507
1453	17.025113	52.566526
1454	17.025595	52.566675
1455	17.025708	52.566751
1456	17.025766	52.566926
1457	17.025895	52.567119
1458	17.025897	52.567288
1459	17.025832	52.567388
1460	17.025187	52.567986
1461	17.025155	52.568018
1462	17.02517	52.568023
1463	17.025605	52.568305
1464	17.025905	52.568485
1465	17.025925	52.568493
1466	17.026155	52.568804
1467	17.02625	52.56883
1468	17.02639	52.568886
1469	17.026656	52.568793
1470	17.02674	52.568828
1471	17.02712	52.568922
1472	17.027483	52.568998
1473	17.027853	52.569053
1474	17.028216	52.569115
1475	17.028633	52.569177
1476	17.028878	52.569201
1477	17.029433	52.569234
1478	17.029971	52.569068
1479	17.03074	52.568896
1480	17.031028	52.568849
1481	17.031267	52.568918
1482	17.03141	52.568964
1483	17.031703	52.569039
1484	17.032618	52.569196
1485	17.03288	52.569274
1486	17.03306	52.569327
1487	17.033063	52.569347
1488	17.033152	52.569456
1489	17.033196	52.56955

1490	17.033372	52.569722
1491	17.033555	52.569898
1492	17.033606	52.569922
1493	17.033701	52.569978
1494	17.034047	52.570054
1495	17.034105	52.570095
1496	17.034451	52.570528
1497	17.034634	52.570636
1498	17.03484	52.570719
1499	17.034998	52.570802
1500	17.035185	52.570899
1501	17.035294	52.570934
1502	17.035423	52.570986
1503	17.035564	52.57107
1504	17.035752	52.57119
1505	17.035867	52.571237
1506	17.036275	52.571371
1507	17.036365	52.571607
1508	17.036639	52.572068
1509	17.036844	52.572312
1510	17.037026	52.572485
1511	17.037359	52.572848
1512	17.037646	52.573147
1513	17.037692	52.573195
1514	17.037761	52.573285
1515	17.037795	52.573386
1516	17.037615	52.573657
1517	17.03761	52.573757
1518	17.037666	52.573901
1519	17.037773	52.573996
1520	17.038321	52.574134
1521	17.039123	52.574176
1522	17.039643	52.574257
1523	17.039839	52.574381
1524	17.039901	52.574434
1525	17.039897	52.574544
1526	17.039799	52.574714
1527	17.03954	52.574906
1528	17.039297	52.575027
1529	17.039204	52.575086
1530	17.039154	52.575169
1531	17.03916	52.575234
1532	17.039306	52.575427
1533	17.039566	52.5755
1534	17.039679	52.575672
1535	17.039947	52.575758
1536	17.040257	52.575804
1537	17.040512	52.575832
1538	17.04062	52.575842
1539	17.04099	52.575877
1540	17.041239	52.575919
1541	17.04131	52.575954
1542	17.041454	52.576061
1543	17.041511	52.57609
1544	17.041731	52.576197
1545	17.041858	52.576399

1546	17.042057	52.576601
1547	17.042095	52.576655
1548	17.041736	52.576855
1549	17.041998	52.577209
1550	17.042111	52.577453
1551	17.042537	52.577399
1552	17.042939	52.578009
1553	17.043104	52.578237
1554	17.043306	52.578522
1555	17.043412	52.57851
1556	17.045359	52.578413
1557	17.045443	52.578384
1558	17.045757	52.579831
1559	17.046086	52.580103
1560	17.04616	52.580111
1561	17.046212	52.580149
1562	17.046112	52.580198
1563	17.04443	52.581019
1564	17.045051	52.58123
1565	17.045477	52.581516
1566	17.045908	52.58168
1567	17.047009	52.582274
1568	17.047818	52.582579
1569	17.048642	52.582889
1570	17.049495	52.583719
1571	17.050379	52.584606
1572	17.050423	52.584655
1573	17.049623	52.584801
1574	17.048465	52.584994
1575	17.048113	52.585158
1576	17.047898	52.585279
1577	17.04782	52.58533
1578	17.047513	52.585615
1579	17.046906	52.586121
1580	17.046849	52.586153
1581	17.045899	52.586717
1582	17.045684	52.587431
1583	17.044693	52.588968
1584	17.044553	52.589025
1585	17.046777	52.589375
1586	17.049303	52.589828
1587	17.049558	52.589872
1588	17.04981	52.589912
1589	17.051043	52.590133
1590	17.052631	52.590425
1591	17.053289	52.590534
1592	17.053598	52.590586
1593	17.054133	52.590634
1594	17.054291	52.590641
1595	17.054269	52.590739
1596	17.054343	52.590753
1597	17.054128	52.590888
1598	17.0537	52.591181
1599	17.05317	52.591474
1600	17.052645	52.591716
1601	17.052279	52.59186

1602	17.051861	52.591985
1603	17.051434	52.592088
1604	17.051093	52.592171
1605	17.050497	52.592394
1606	17.049995	52.592539
1607	17.049521	52.592683
1608	17.049106	52.592797
1609	17.048792	52.592869
1610	17.048455	52.592929
1611	17.047953	52.593007
1612	17.047504	52.593057
1613	17.047289	52.593085
1614	17.046987	52.593148
1615	17.046572	52.593255
1616	17.046056	52.593406
1617	17.045614	52.593543
1618	17.045376	52.593623
1619	17.045137	52.59371
1620	17.044861	52.593819
1621	17.045617	52.594173
1622	17.046423	52.594553
1623	17.047054	52.594882
1624	17.047752	52.595207
1625	17.048446	52.595552
1626	17.048558	52.595485
1627	17.048628	52.59552
1628	17.049189	52.595772
1629	17.050183	52.596256
1630	17.05137	52.596841
1631	17.051702	52.596893
1632	17.052631	52.597329
1633	17.053157	52.597599
1634	17.053232	52.597698
1635	17.052146	52.597966
1636	17.051365	52.598018
1637	17.051119	52.598064
1638	17.050879	52.598178
1639	17.050738	52.598281
1640	17.050215	52.598655
1641	17.050086	52.598762
1642	17.049928	52.598982
1643	17.04975	52.599231
1644	17.049654	52.599364
1645	17.049522	52.599488
1646	17.049176	52.599698
1647	17.048702	52.599911
1648	17.048322	52.600119
1649	17.048029	52.600376
1650	17.047519	52.600863
1651	17.046736	52.601551
1652	17.0458	52.602344
1653	17.045758	52.602385
1654	17.045315	52.602774
1655	17.044955	52.60308
1656	17.043552	52.604283
1657	17.043029	52.604778

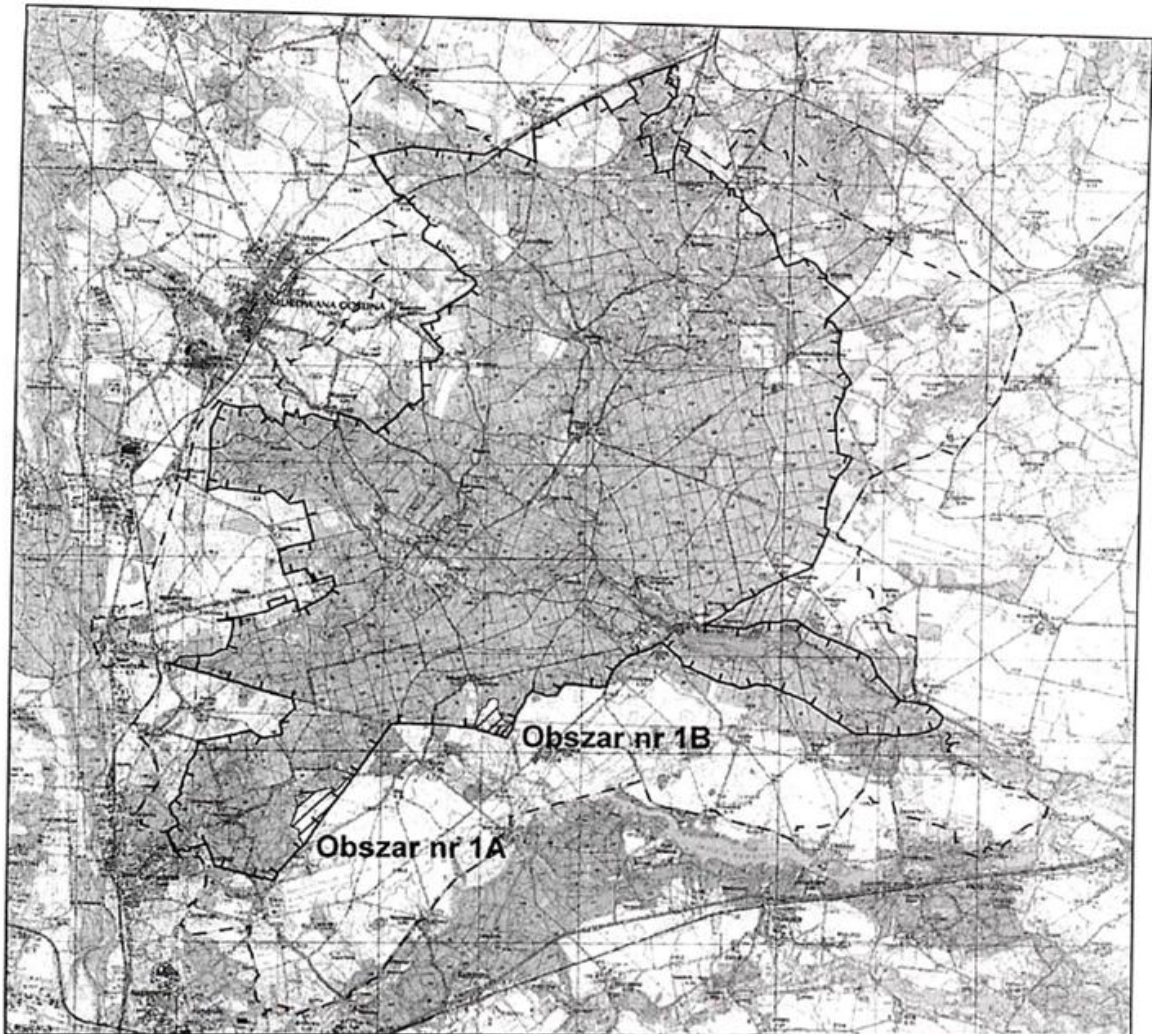
1658	17.042742	52.605014
1659	17.042925	52.605135
1660	17.042381	52.605187
1661	17.040586	52.606082
1662	17.040021	52.606366
1663	17.039664	52.606528
1664	17.039275	52.606717
1665	17.038525	52.607247
1666	17.038343	52.607308
1667	17.038213	52.60735
1668	17.03772	52.607506
1669	17.037437	52.607593
1670	17.037206	52.60769
1671	17.037035	52.607777
1672	17.036933	52.607831
1673	17.036333	52.608152
1674	17.036348	52.608641
1675	17.036336	52.608723
1676	17.036312	52.609304
1677	17.036241	52.611443
1678	17.036206	52.61256
1679	17.036174	52.612716
1680	17.036081	52.613174
1681	17.035925	52.613498
1682	17.035494	52.6141
1683	17.039333	52.617342
1684	17.040909	52.618682
1685	17.040966	52.618731
1686	17.041756	52.619394
1687	17.041796	52.61944
1688	17.04255	52.620098
1689	17.042694	52.620118
1690	17.042873	52.620155
1691	17.043806	52.62034
1692	17.04457	52.620289
1693	17.044979	52.620242
1694	17.046069	52.620178
1695	17.047856	52.620795
1696	17.050231	52.6196
1697	17.050291	52.619569
1698	17.051033	52.619195
1699	17.051082	52.619176
1700	17.051119	52.619214
1701	17.051279	52.619433
1702	17.056177	52.618103
1703	17.057906	52.616773
1704	17.058252	52.616675
1705	17.060073	52.616159
1706	17.060616	52.61601
1707	17.061546	52.615804
1708	17.061583	52.615866
1709	17.061743	52.616067
1710	17.062233	52.616084
1711	17.065091	52.615673
1712	17.065207	52.61565
1713	17.065469	52.615604

1714	17.066238	52.61536
1715	17.066542	52.61513
1716	17.067379	52.614887
1717	17.06728	52.614673
1718	17.067236	52.614576
1719	17.067741	52.614477
1720	17.068175	52.614514
1721	17.068595	52.614594
1722	17.069122	52.614031
1723	17.070242	52.613597
1724	17.070408	52.613436
1725	17.070452	52.612693
1726	17.070364	52.61173
1727	17.073244	52.611209
1728	17.075007	52.610889
1729	17.076509	52.610616
1730	17.077993	52.610339
1731	17.077488	52.610109
1732	17.076709	52.610192
1733	17.076295	52.609707
1734	17.076561	52.609671
1735	17.076698	52.609627
1736	17.077069	52.6094
1737	17.077202	52.609353
1738	17.077405	52.609319
1739	17.077323	52.609247
1740	17.077367	52.609229
1741	17.077422	52.609206
1742	17.077693	52.609403
1743	17.078458	52.60883
1744	17.079626	52.607944
1745	17.079712	52.607761
1746	17.080226	52.60798
1747	17.080656	52.607744
1748	17.081134	52.607605
1749	17.081694	52.607569
1750	17.082046	52.60747
1751	17.082689	52.607866
1752	17.082707	52.607876
1753	17.082763	52.607911
1754	17.08353	52.608381
1755	17.083769	52.608418
1756	17.083971	52.60845
1757	17.084467	52.608723
1758	17.08476	52.608884
1759	17.08486	52.608941
1760	17.085249	52.609162
1761	17.085618	52.609372
1762	17.085677	52.609529
1763	17.085705	52.609601
1764	17.08624	52.609874
1765	17.086569	52.610065
1766	17.086687	52.610122
1767	17.08744	52.610487
1768	17.088284	52.610861
1769	17.08863	52.611

1770	17.089202	52.611229
1771	17.090336	52.611658
1772	17.090405	52.611684
1773	17.09057	52.611738
1774	17.090957	52.61187
1775	17.091244	52.611969
1776	17.091323	52.611996
1777	17.092034	52.612189
1778	17.09307	52.612617
1779	17.093133	52.612602
1780	17.093184	52.612628
1781	17.093195	52.612668
1782	17.093654	52.612845
1783	17.094253	52.613102
1784	17.09454	52.61313
1785	17.096067	52.613678
1786	17.09777	52.614337
1787	17.097982	52.61456
1788	17.098368	52.614689
1789	17.099131	52.615011
1790	17.099303	52.615114
1791	17.099996	52.615377
1792	17.100931	52.615756
1793	17.10173	52.616035
1794	17.102944	52.616508
1795	17.10417	52.616972
1796	17.105336	52.617361
1797	17.105405	52.617383
1798	17.106084	52.617625
1799	17.106794	52.617862
1800	17.10707	52.61792
1801	17.107266	52.618005
1802	17.107563	52.618159
1803	17.108116	52.618357
1804	17.106588	52.618526
1805	17.108801	52.618483
1806	17.109013	52.618512
1807	17.109399	52.618632
1808	17.109834	52.618736
1809	17.109988	52.618743
1810	17.110169	52.618702
1811	17.113299	52.615966
1812	17.113315	52.615952
1813	17.113446	52.616007
1814	17.114894	52.61656
1815	17.116629	52.617224
1816	17.117416	52.617944
1817	17.117749	52.618128
1818	17.11934	52.618755
1819	17.120761	52.619353
1820	17.120717	52.61939
1821	17.120378	52.619676
1822	17.120291	52.61975
1823	17.119611	52.620324
1824	17.118546	52.621219
1825	17.118459	52.621293

1826	17.118026	52.621656
1827	17.118169	52.621708
1828	17.11833	52.621902
1829	17.119477	52.622239
1830	17.11954	52.622172
1831	17.120734	52.622571
1832	17.121722	52.622865
1833	17.122482	52.623078
1834	17.123397	52.623335
1835	17.12482	52.623734
1836	17.125523	52.623931
1837	17.125966	52.624055
1838	17.126436	52.624187
1839	17.12727	52.62442
1840	17.128295	52.624708
1841	17.128627	52.624801
1842	17.128533	52.624884
1843	17.129137	52.625043
1844	17.129521	52.62515
1845	17.129848	52.625242
1846	17.130306	52.625285
1847	17.130194	52.625344
1848	17.130404	52.625417
1849	17.13136	52.625593
1850	17.131596	52.625542
1851	17.131594	52.625541
1852	17.131567	52.625483
1853	17.132202	52.625313
1854	17.132206	52.62529
1855	17.132339	52.624506
1856	17.13249	52.623618
1857	17.132518	52.623422

Załącznik nr 4 do uchwały Nr XXXVII/729/13
Sejmiku Województwa Wielkopolskiego
z dnia 30 września 2013 r.

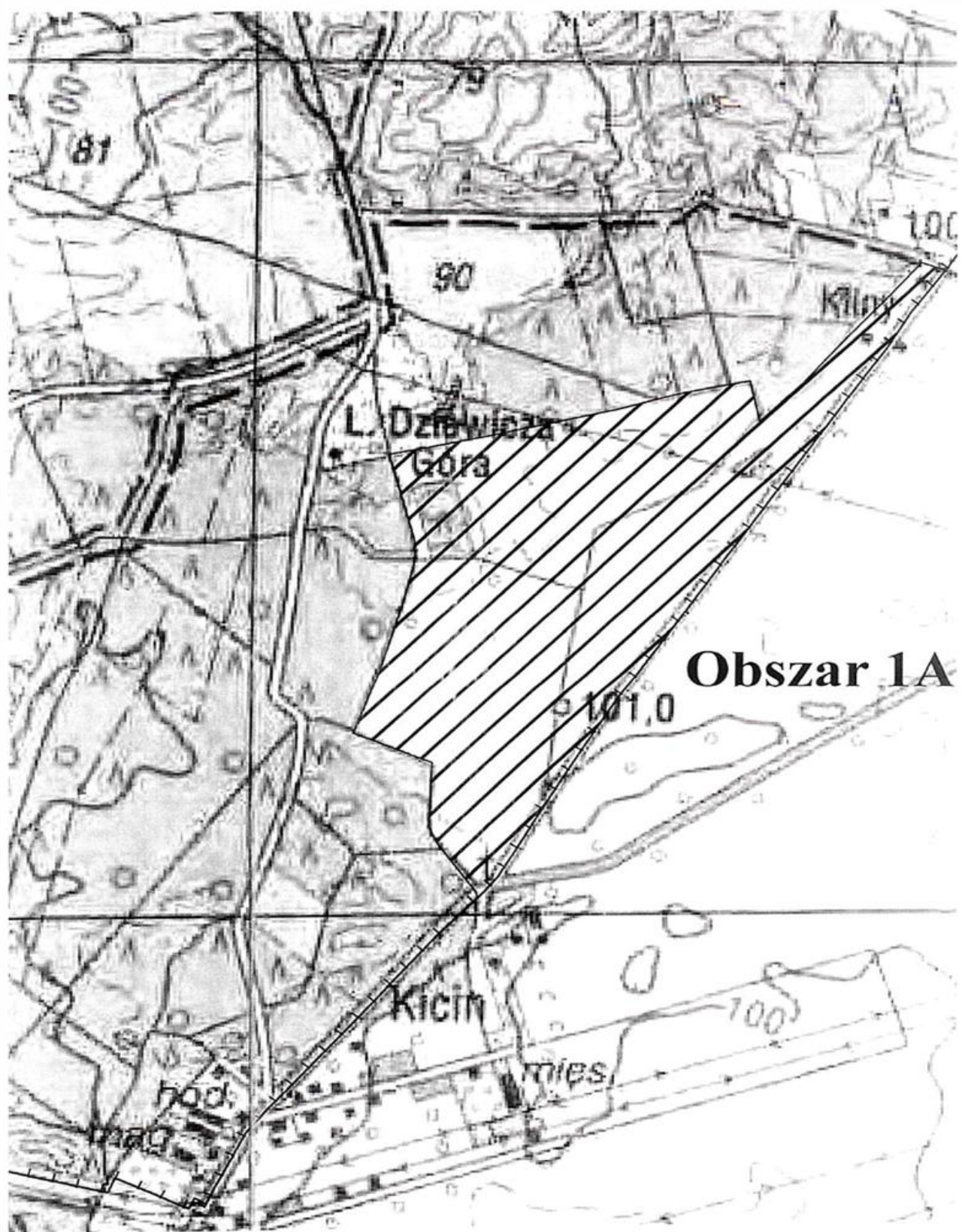


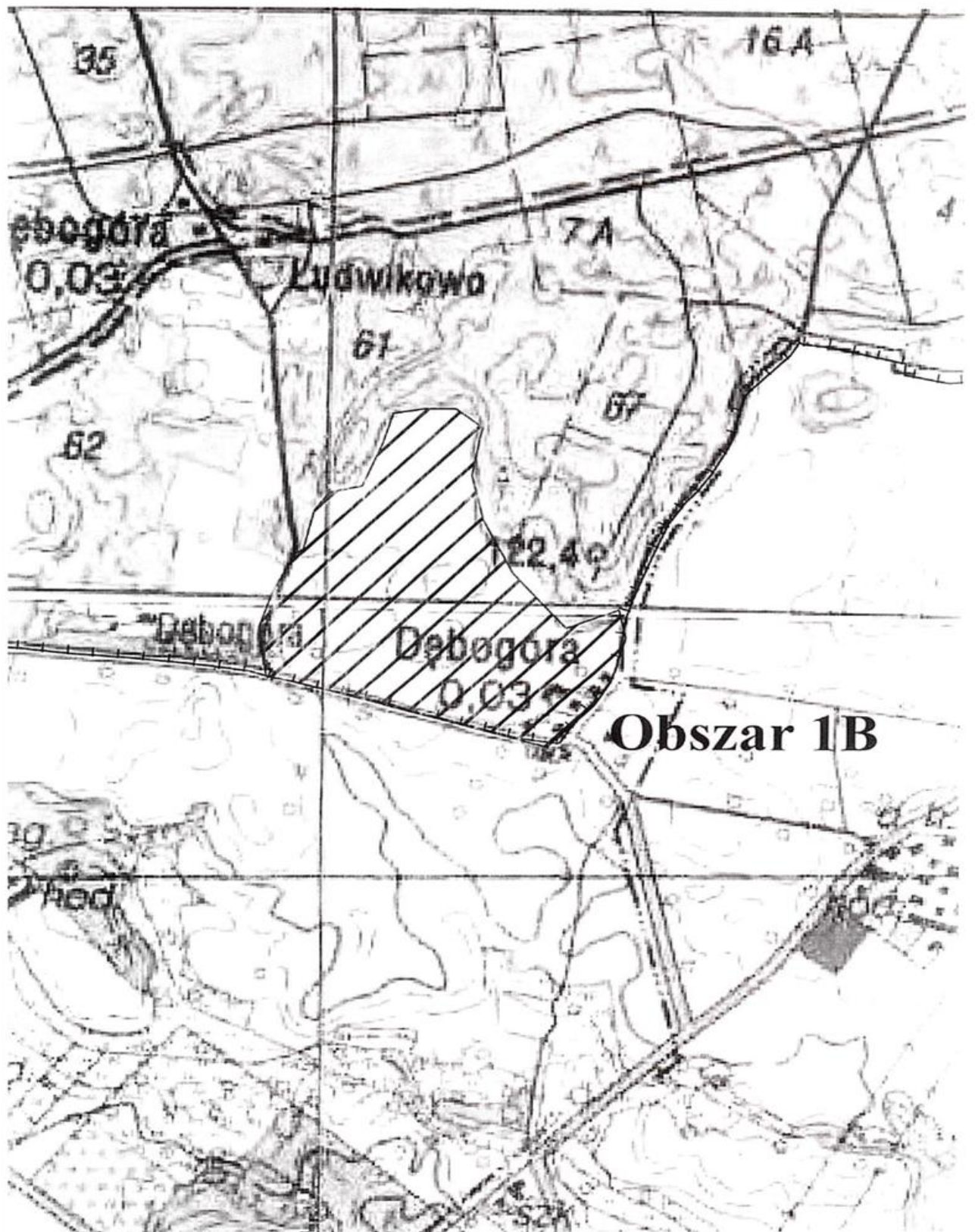
Przebieg granic obszarów nr 1A i 1B
Parku Krajobrazowego Puszcza Zielonka

- +—+— granica parku krajobrazowego
- - - otulina parku krajobrazowego
- ▨ obszary nr 1A i 1B

0 1 800 3 600 7 200
m

Układ współrzędnych: PUWG 1992
Odwzorowanie: Gaussa-Kruegera
Południk środkowy strefy: 19 E°





Załącznik nr 5 do Uchwały Nr XXXVII/729/13
Sejmiku Województwa Wielkopolskiego
z dnia 30 września 2013 roku

Wykaz współrzędnych punktów załamania granicy
"obszaru 1A" w Parku Krajobrazowym Puszcza Zielonka
wykonany w układzie PUWG 1992

Numer punktu	Współrzędna X	Współrzędna Y
1	17.033423	52.476053
2	17.033472	52.475934
3	17.033654	52.476052
4	17.033885	52.476228
5	17.034071	52.476369
6	17.034675	52.477008
7	17.035404	52.477794
8	17.035526	52.477924
9	17.037699	52.480226
10	17.038366	52.48086
11	17.038882	52.48135
12	17.038945	52.481409
13	17.038986	52.481448
14	17.039357	52.481801
15	17.039658	52.482086
16	17.039941	52.482358
17	17.040191	52.482598
18	17.040669	52.483051
19	17.04117	52.483527
20	17.041256	52.483607
21	17.041911	52.484223
22	17.042433	52.484717
23	17.042475	52.484756
24	17.042596	52.484872
25	17.043143	52.485392
26	17.043604	52.485831
27	17.043837	52.486053
28	17.0441	52.486303
29	17.044419	52.486606
30	17.044774	52.486944
31	17.045127	52.48728
32	17.045634	52.487762
33	17.046399	52.488581
34	17.047382	52.489437
35	17.047339	52.489479
36	17.046631	52.489611
37	17.045573	52.488831
38	17.044288	52.487905
39	17.04308	52.486979
40	17.04179	52.486148
41	17.04144	52.487
42	17.039502	52.48673
43	17.037257	52.486311

44	17.033228	52.485673
45	17.030126	52.48524
46	17.031064	52.483445
47	17.031084	52.483017
48	17.030736	52.482058
49	17.030098	52.480619
50	17.029376	52.47932
51	17.031899	52.478743
52	17.03188	52.477409
53	17.032129	52.47708

Wykaz współrzędnych punktów załamania granicy
"obszaru IB" w Parku Krajobrazowym Puszcza Zielonka
wykonany w układzie PUWG 1992

Numer punktu	Współrzędna X	Współrzędna Y
54	17.091407	52.497249
55	17.09285	52.498177
56	17.093297	52.498661
57	17.093724	52.49962
58	17.093465	52.500188
59	17.090078	52.500896
60	17.089095	52.501975
61	17.088663	52.502921
62	17.088862	52.503734
63	17.088932	52.503926
64	17.088057	52.504293
65	17.087121	52.504278
66	17.086111	52.504166
67	17.085826	52.503542
68	17.085241	52.502627
69	17.084233	52.502468
70	17.083782	52.50208
71	17.083505	52.501266
72	17.083275	52.501167
73	17.082608	52.500346
74	17.08225	52.499626
75	17.082527	52.49863